A large, stylized teal graphic on the left side of the slide, composed of several overlapping, curved, brushstroke-like shapes.

Bylaw C-1172-21 Ball Park District Stage 1

● Public Hearing

City of Spruce Grove
Council Meeting
Bylaw C-1172-21
October 12, 2021





Location and Amendment



Location Aerial
Bylaw C-1172-21
Proposed Redistricting
Ball Park District Stage 1



» Legal Description:

SW 1-53-27-W4

» Redistricting:

Ball Park District Stage 1



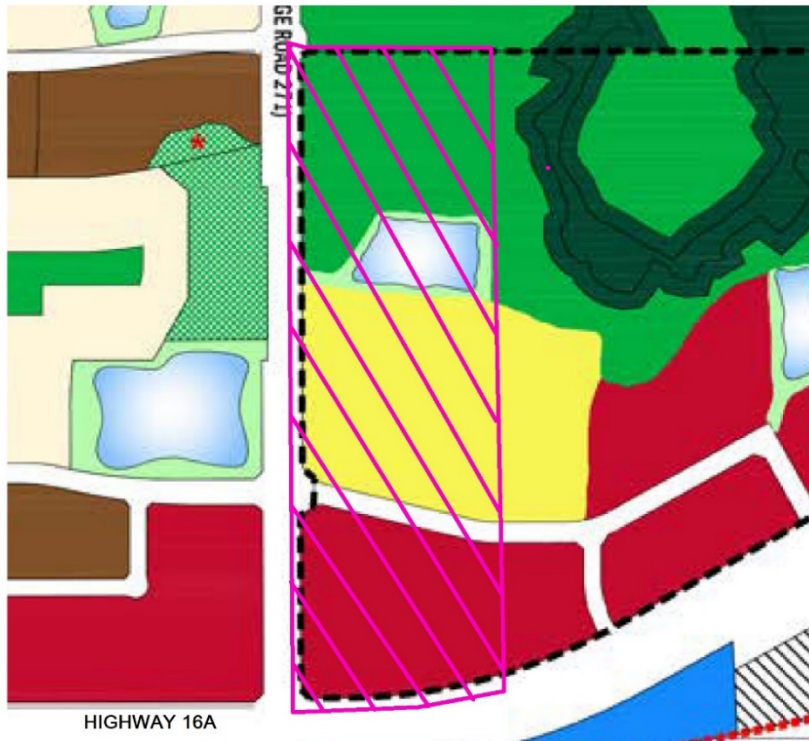


East Pioneer ASP



ASP Overview
C-1172-21

Site of Proposed Redistricting
Ball Park District Stage 1



EAST PIONEER
SPRUCE GROVE
AREA STRUCTURE PLAN
LAND USE CONCEPT

LEGEND

Low to Medium Density Residential	Environmental Reserve
Medium to High Density Residential	Special Study Area
Commercial	Entertainment District
Institutional	Potential Park
Park / Open Space	Potential Private Collector
Easton Natural Area	ASP Boundary
Stormwater Management Facility	Amendment Boundary

» Land Use Concept

- » Park / Open Space
- » Stormwater Management Facility
- » Entertainment
- » Commercial

» Intended Land Use

- » Natural Area Park
- » Stormwater Management Facility
- » Stadium
- » Vehicle Oriented Commercial



Proposed Amendment

» Proposed Redistricting



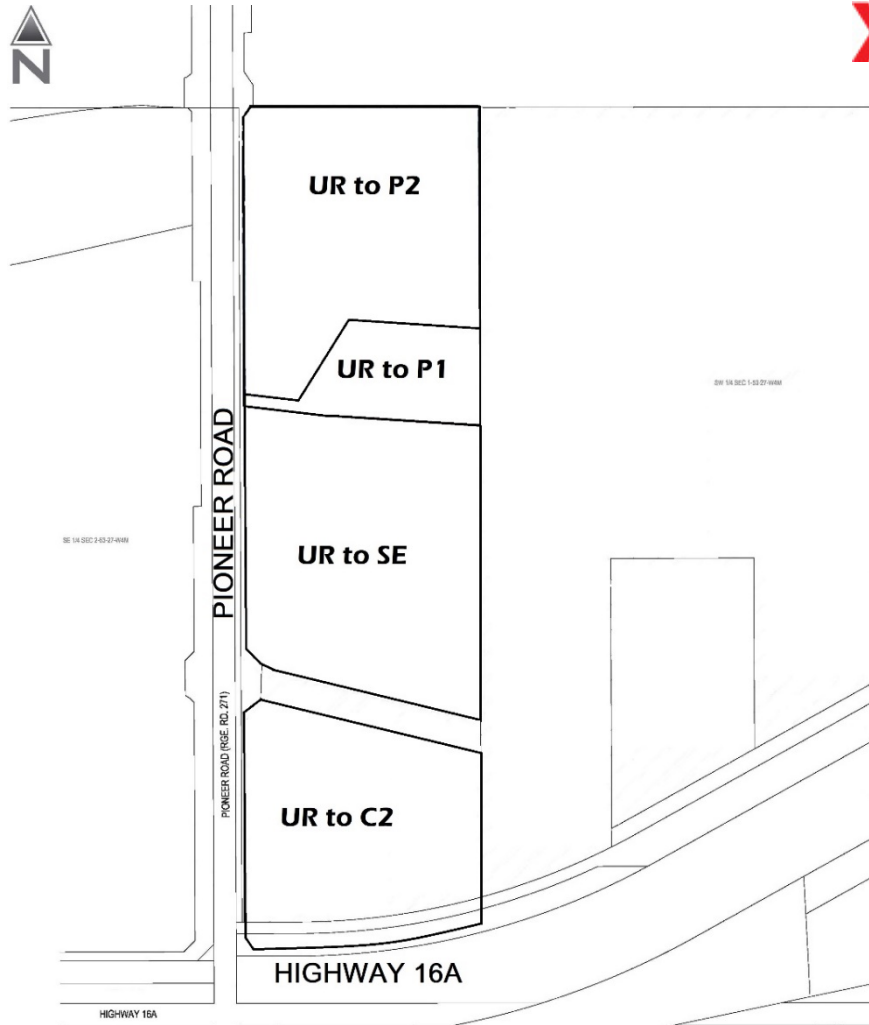
From:

- **UR**– Urban Reserve



To:

- **P2** – Natural Areas
- **P1** – Parks and Recreation
- **SE** – Sports and Entertainment
- **C2** – Vehicle Oriented Commercial



Questions & Comments

