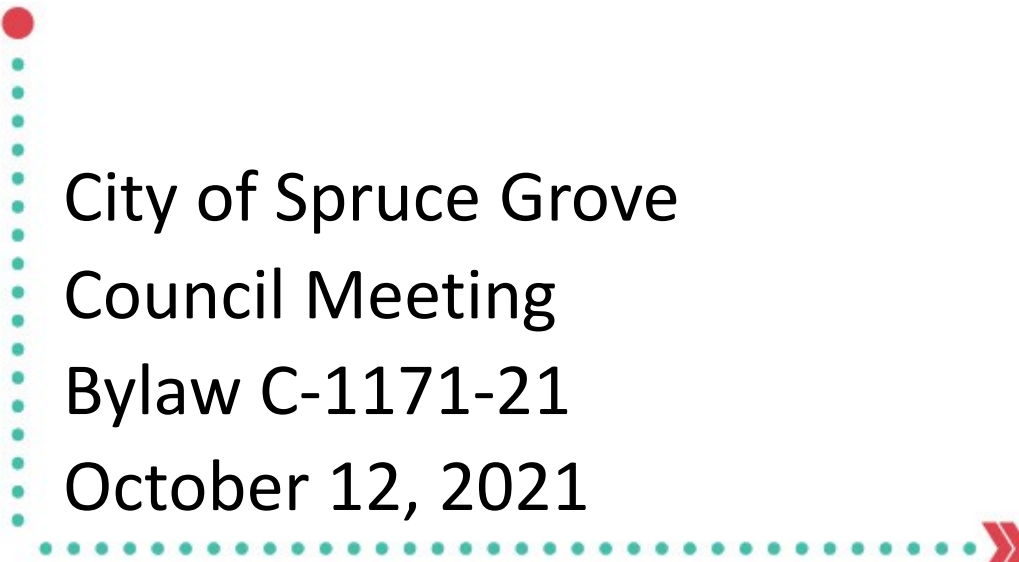
A large, stylized teal graphic on the left side of the slide, composed of several overlapping, curved, brushstroke-like shapes that sweep upwards and to the right.

Road Closure Bylaw SW 1-53-27-W4

Public Hearing

A decorative dotted line in teal, starting with a solid red dot at the top left, curving around the text, and ending with a red double arrow pointing right.

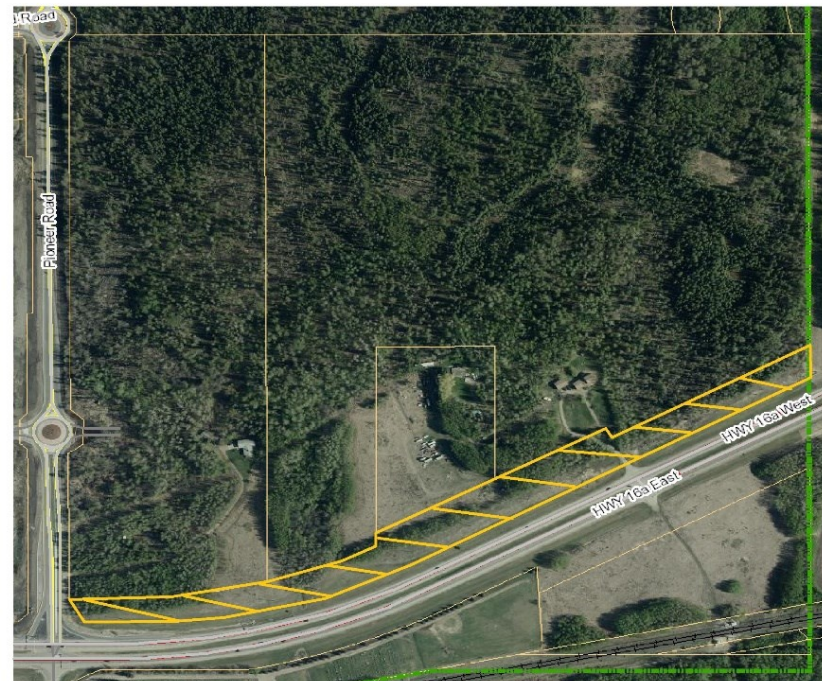
City of Spruce Grove
Council Meeting
Bylaw C-1171-21
October 12, 2021



Purpose and Site Location

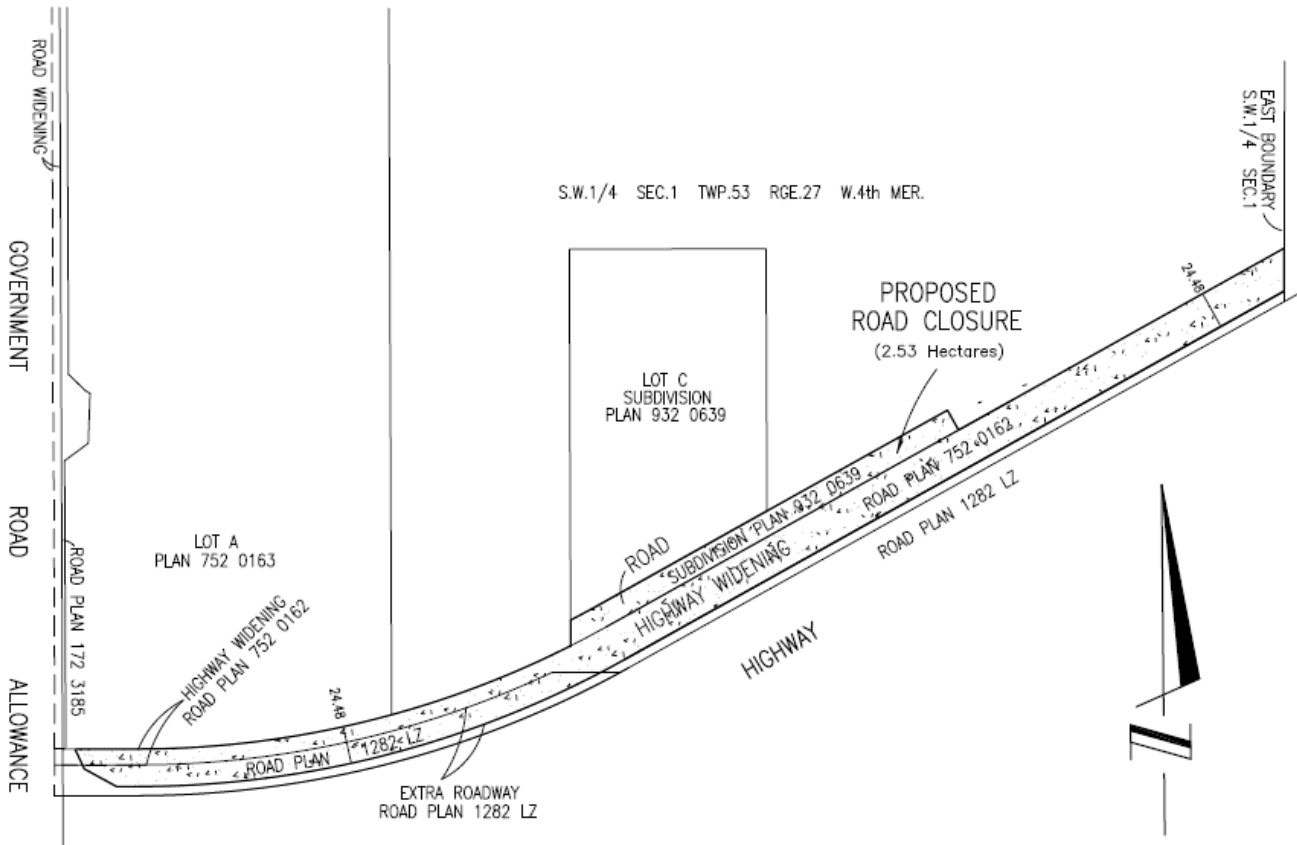
- » This Bylaw's propose is to close 2.53 hectares of surplus road right-of-way.
- » The *Municipal Government Act* allows that a municipality may close the whole or any part of a road by bylaw.
- » Closure area is located on the north side of Highway 16A to the east of Pioneer Road.

 The City of
SPRUCE GROVE
Location Aerial
C-1171-21
Proposed Road Closure





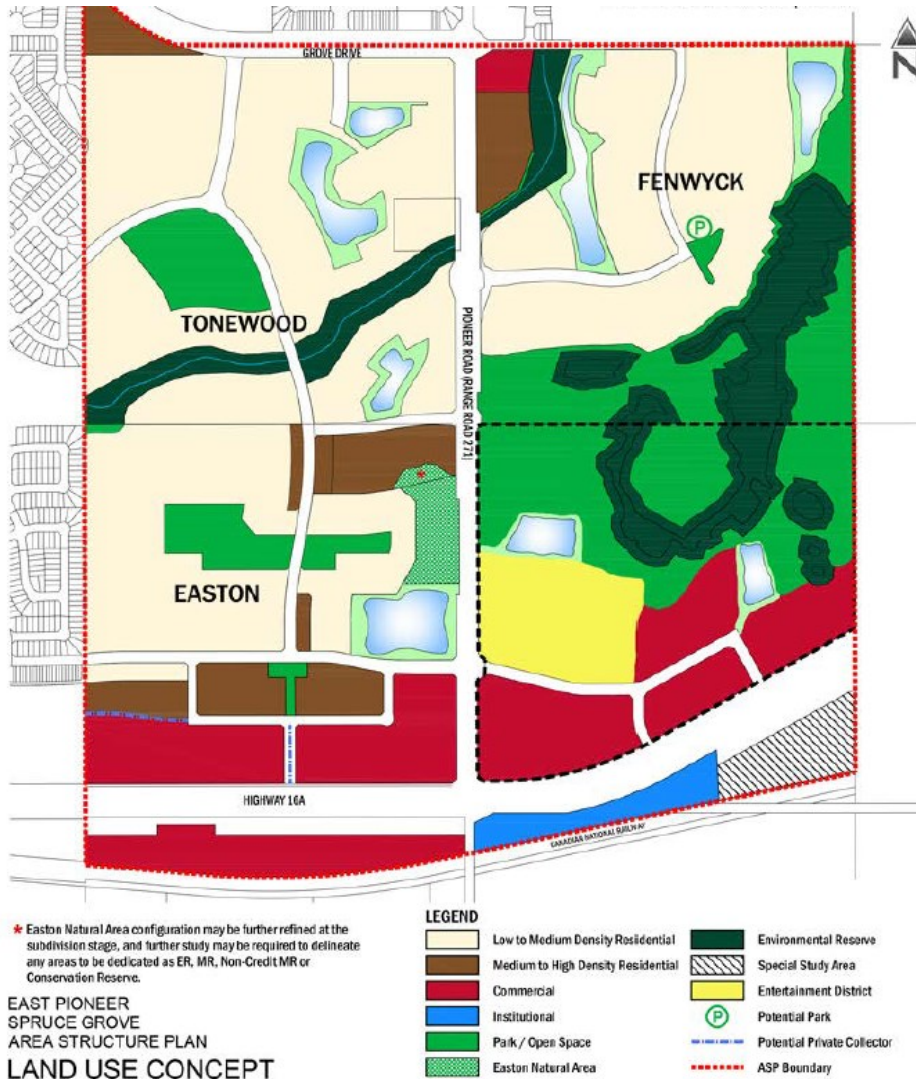
Closure Area



- » The closure area was confirmed as surplus by a Highway 16A Functional Plan review.
- » The road closure area is registered under Plan 932 0639, Plan 752 0162, and Plan 1282 - all within SW-1-53-27-W4.



ASP Context



- » Road closure will provide for additional development lands as contemplated within the East Pioneer Area Structure Plan for the Base Ball District.
- » Closure would allow future sale to the adjacent landowner for consolidation into abutting development areas.



Public Hearing

C-1171-21

Questions

