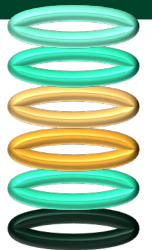




The City of
**SPRUCE
GROVE**

2026 SPRING INTO CONSTRUCTION

Presented by: Engineering





Communications

The screenshot shows the City of Spruce Grove website. The header includes the city logo and name, a search icon, and a menu icon. The breadcrumb trail reads "Home / Services / Construction Projects". The main heading is "Construction Projects". The text below states: "Each year the City of Spruce Grove undertakes a range of construction projects to support and enhance community growth, development and safety for both residents and visitors. This can include the regular maintenance or replacement of existing infrastructure, as well as the addition of new features or amenities." It then says: "Construction projects for 2026 are being finalized and more information will be shared soon." A "Questions?" section follows, with the text: "For any inquires related to any of the construction projects listed above, please contact engineering@sprucegrove.org".

The graphic features the City of Spruce Grove logo and name in the top left. The main text reads "2026 CONSTRUCTION PROJECT UPDATES" in large, bold letters. Below this is a blue button with the text "sprucegrove.org/ConstructionProjects". The background is dark blue with an illustration of a yellow bulldozer, a grey wheelbarrow, and an orange and white traffic cone.



Communications

3 Phases of Communication

Phase 1 - Kick off the season

Phase 2 - Project-specific updates throughout the season

Phase 3 - Wrap up the season

COMMUNICATIONS STRATEGIES	AUDIENCE	TIMING
Website tools	All residents	April - October / November (start to end of construction season)
Social media campaign	All residents	April - October / November (start to end of construction season)
Electronic communications	All residents	April - October / November (start to end of construction season)
Print materials	All residents	April - October / November (start to end of construction season)
Signage	All residents	April - October / November (start to end of construction season)

List of Capital Projects

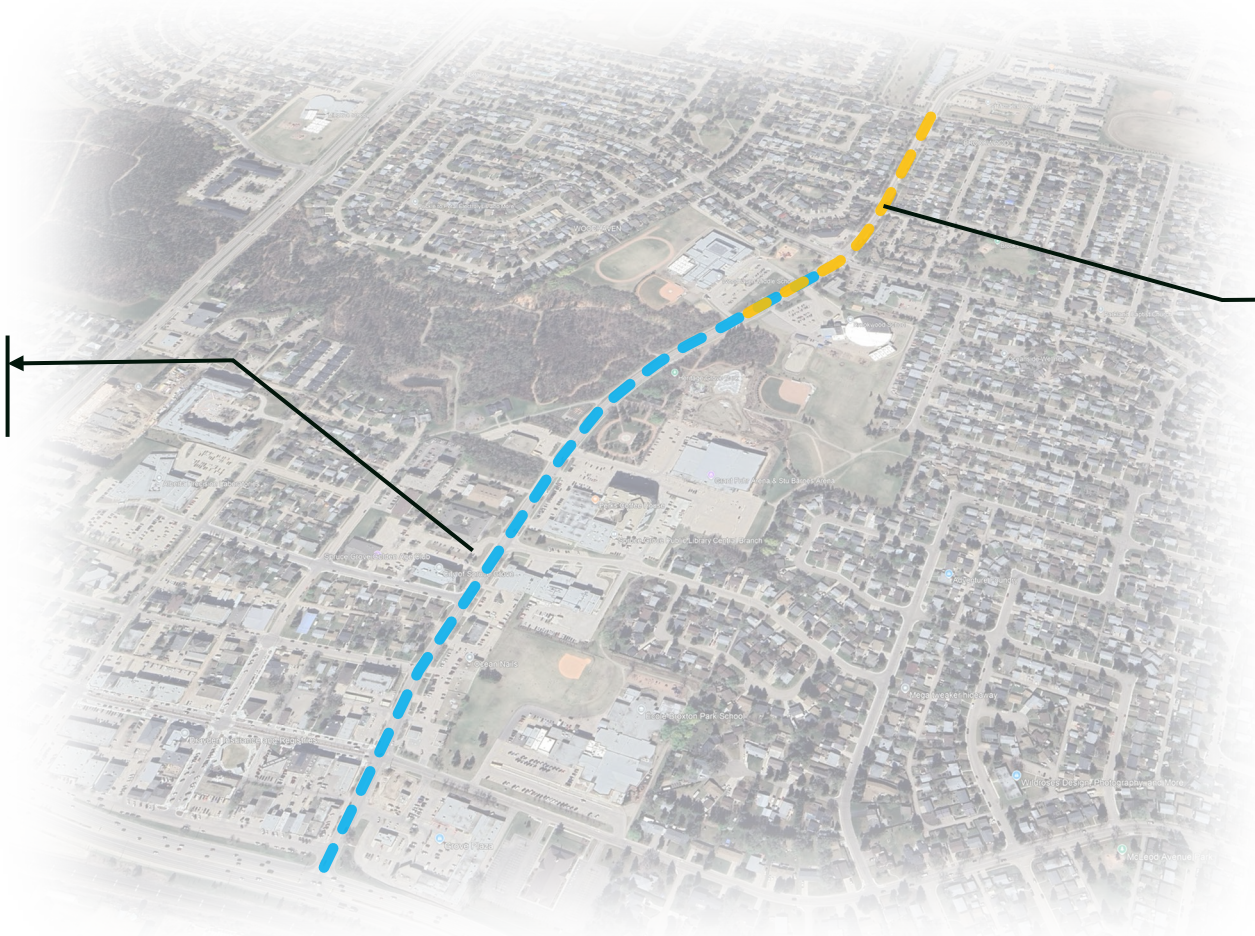
- King Street - Underground Rehabilitation and Surface Renewal
- Century Road - Surface Rehabilitation
- South Avene & Diamond Avenue - Water and Sanitary Mainline Rehabilitation
- Woodhaven Back Alley Resurfacing
- Stoneshire Crescent - Surface Rehabilitation
- Pressure Reducing Valves
- Boundary Road Phase II - New Growth Infrastructure



King Street

Phase I

\$3,200,000.00



Water Mainline Rehabilitation

1,300 meters of water main upgrade

Hydrant Replacements

Water Service Replacements

Pipeline Upsize

Sanitary Mainline Rehabilitation

600 meters of sanitary upgrade

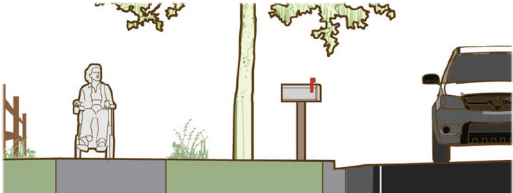
Sanitary Services Replacement

Pipeline Upsize

King Street

\$150,000.00

Phase II



Accessibility



Intersection Upgrade



Gateway and Streetscape Enhancements



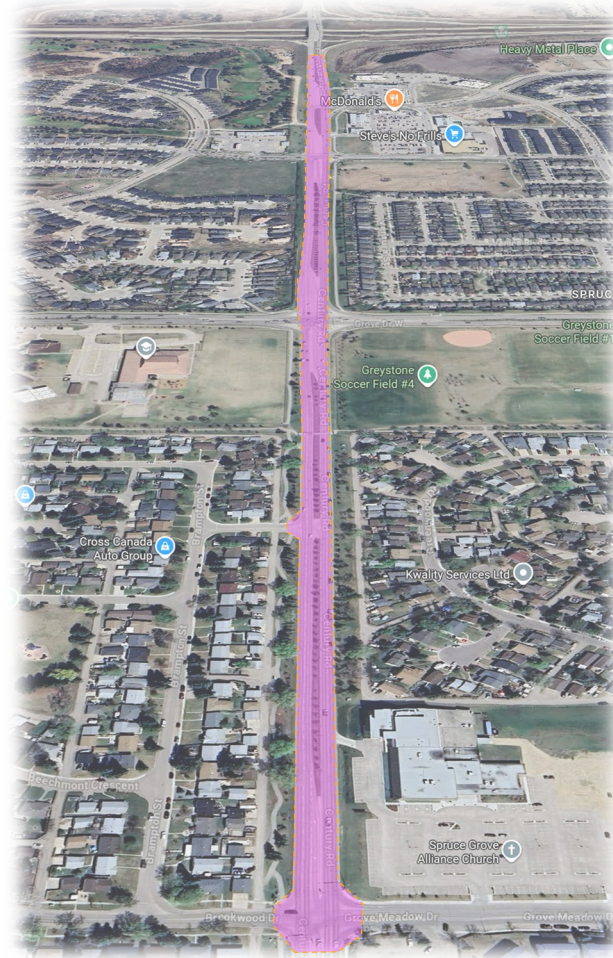
Pro - business



Century Road

\$1,850,000.00

- Full Depth Recycling (Pulverization)
- Mill & Overlay
- Catch Basin Top – End Repairs
- Traffic Signal Upgrade



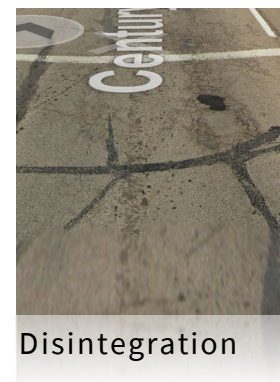
Cracking



Catch Basin Repairs



Distortion

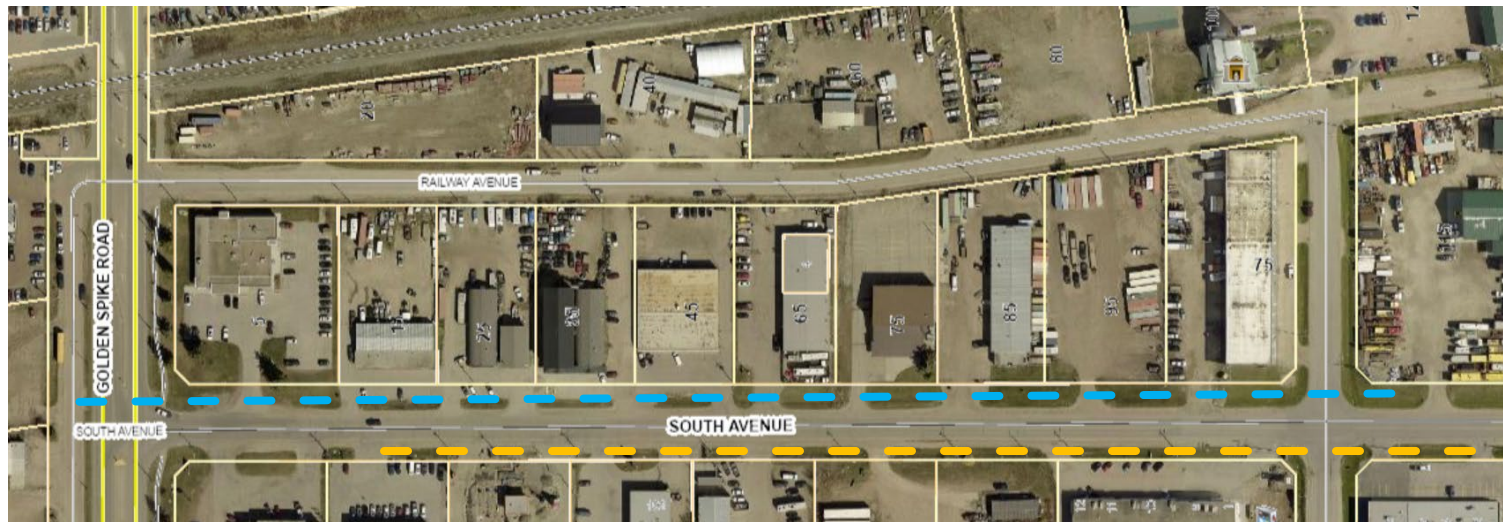


Disintegration

South and Diamond Avenue

\$2,100,000.00

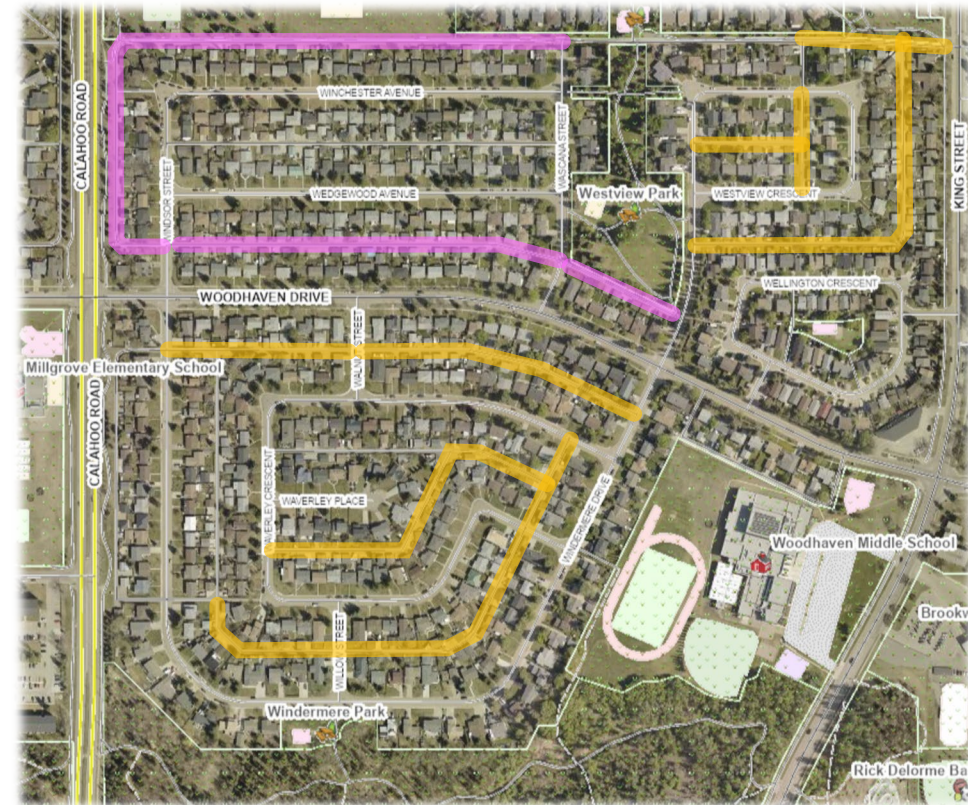
- 700 meters of water main upgrade
- Sanitary Sewer Lining
- Hydrant and water service replacements



Woodhaven Back Alley

\$400,000.00

- Back Alley Rehabilitation





Stoneshire Crescent

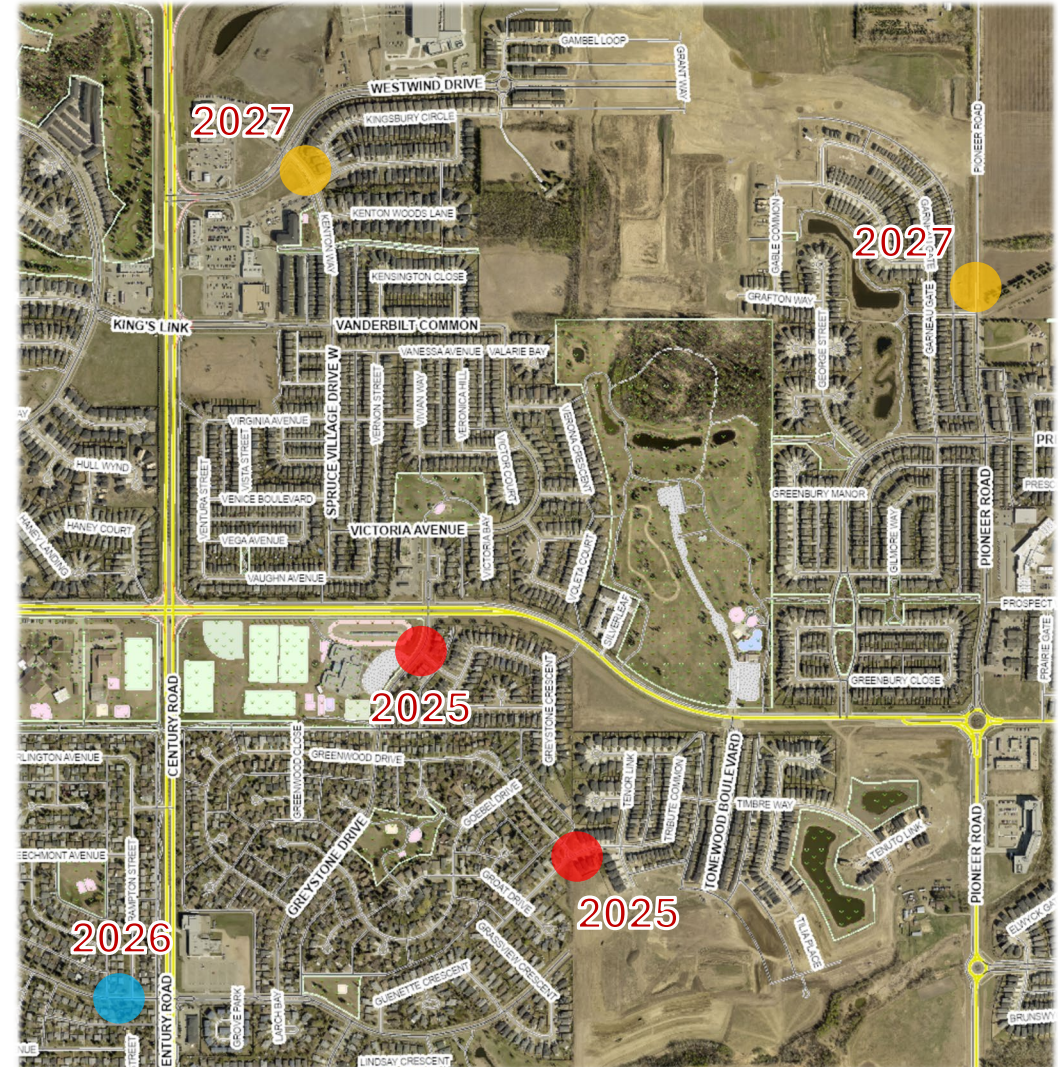
\$1,270,000.00

- Full Depth Recycling (Pulverization)
- Sidewalks, Curbs and Gutters Replacement
- Catch Basin Top - End Repairs



Pressure Reducing Valves

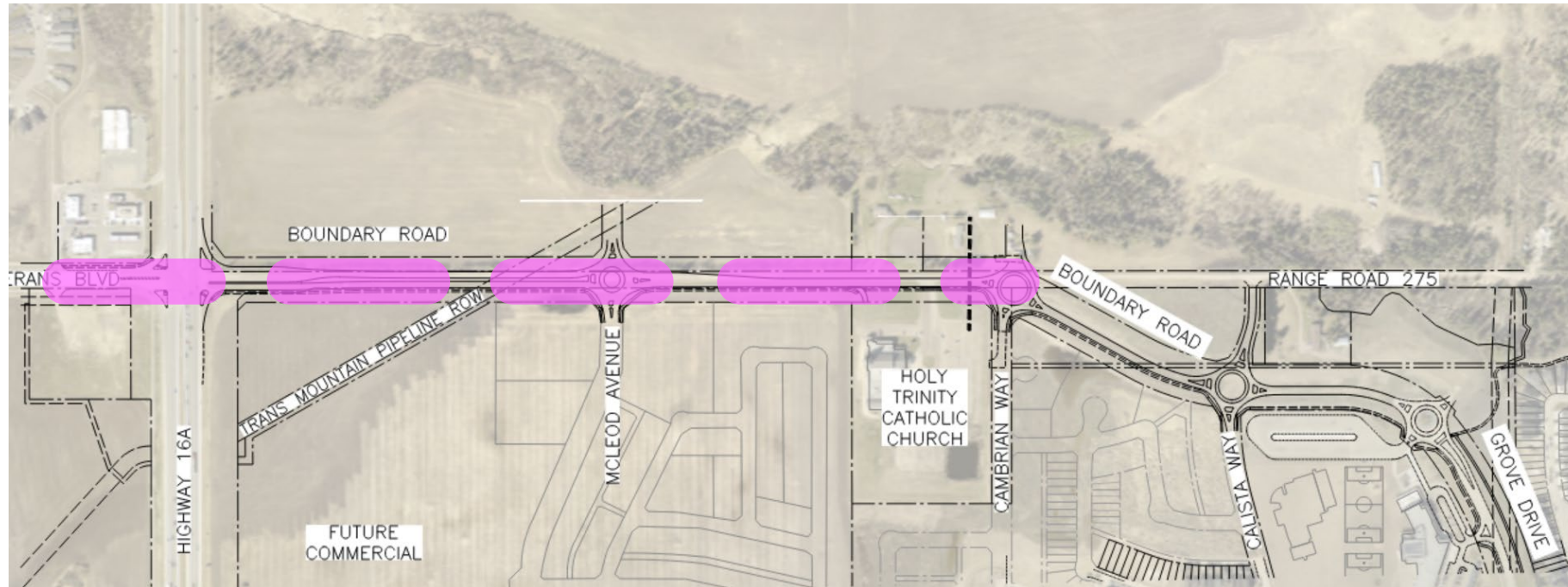
- Establish Pressure Zone 4
- Achieve a reasonable end-user level of service
- Maintain water mainline pressure at a desirable rate



Boundary Road ^{Phase II}

\$6,456,000.00

New Growth Infrastructure



Municipal Infrastructure Projects

- Crosswalk Improvements (RRFB's)
- Storm Water Management Facility Rehab
- Traffic Calming
- Storm Water Management Facility Aeration
- Golden Spike Road and Diamond Avenue Intersection Design
- NoTraffic
- Dog Creek Slope Stability





CROSSWALK IMPROVEMENTS

\$160,000

McLeod Avenue
at Home Depot



McLeod Avenue
at Westridge
Crescent

CROSSWALK IMPROVEMENTS

\$160,000

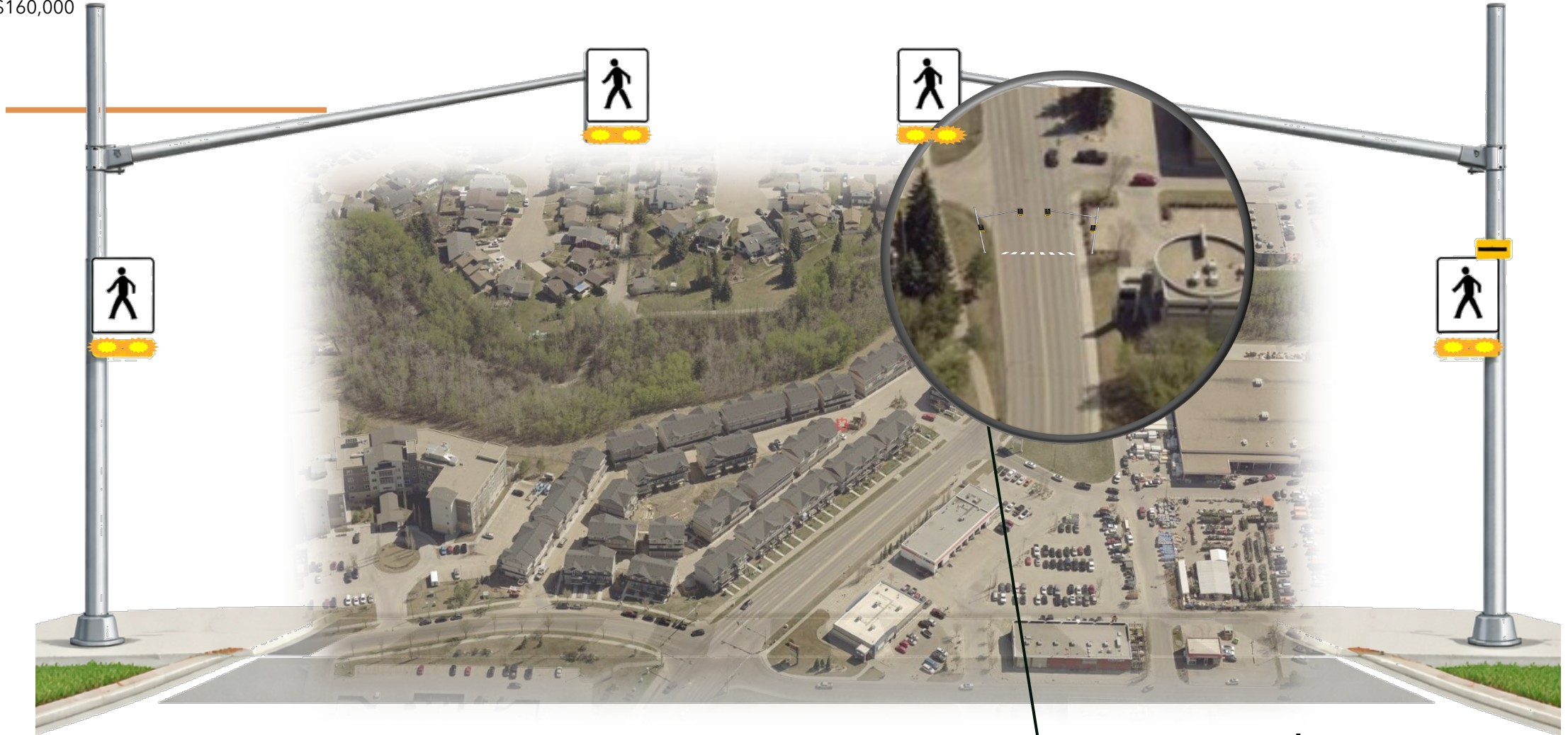


McLeod Avenue
at Home Depot

Permanent solar RRFB's with overhead
flasher and audible pedestrian
pushbuttons

CROSSWALK IMPROVEMENTS

\$160,000



Permanent solar RRFB's with overhead flasher and audible pedestrian pushbuttons

McLeod Avenue at Westridge Crescent



SWMF REHAB

\$250,000

Westlake SWMF Capacity and Flow Restoration

Remove sediment buildup and reestablish channel and repair outfall



Inlet Structure

Repair inlet structure - stabilize banks



Replace overflow

Remove split culverts, replace with rip-rap



SWMF REHAB

\$250,000

West Jubilee SWMF Capacity Restoration

Removal of sub surface sediment
buildup - re-establish capacity and
reduce algae growth



SWMF REHAB

\$250,000

Hydrone



Portable one-person deployable drone

Used for bathymetric surveys and sediment volume monitoring in SWMFs

Creates a detailed map of the pond floor to compare against as built design, to be used to optimize pond dredging planning and operations



Traffic Calming

TC Curb Deployments

Nelson Drive and Weston Drive

Centre line Placement due to limited width and bus turning radii

Intended to reduce speeds and protect pedestrians



Traffic Calming

TC Curb Deployments

Avonlea Way and Aspenglen Drive

Curb Placement intended to improve crossing safety and intersection driver awareness



Traffic Calming

TC Curb
Deployments



Woodhaven Drive and Windermere Drive

Curb Placement intended to improve crossing safety and reduce speed

Traffic Calming

TC Curb Deployments

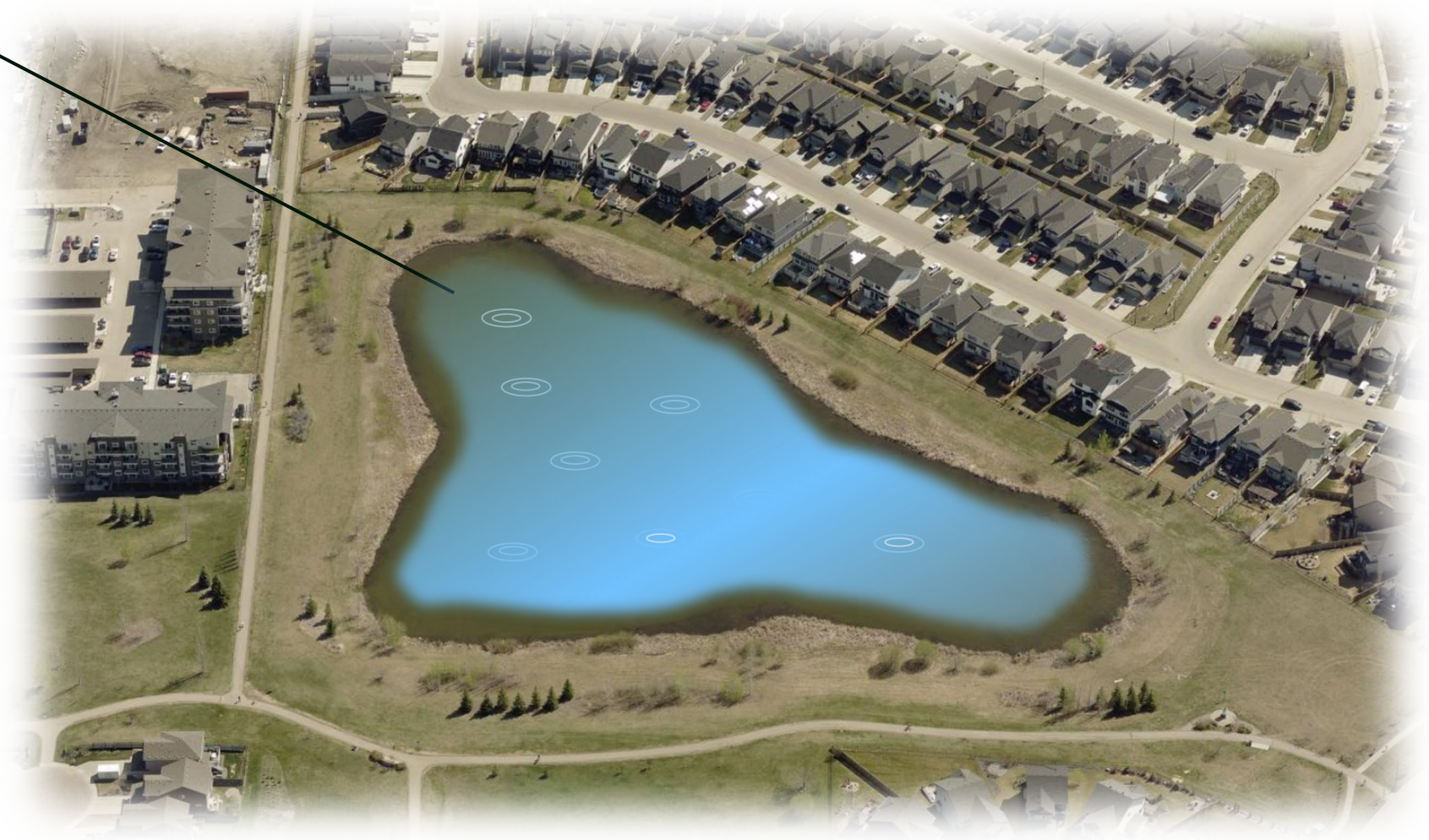
Beaumont Ave and Brampton Street
Curb Placement intended to tighten radii, improve crossing safety and reduce speed



SWMF Aeration

McLaughlin
SWMF

Replace existing fountain with
subsurface diffusers



SWMF Aeration

Hawthorne
SWMF

Add power service from rear alley

Install 8 subsurface diffusers





Traffic Signals

Golden Spike Road and Diamond Ave

Geometric reconfiguration and Oswald Drive Closures

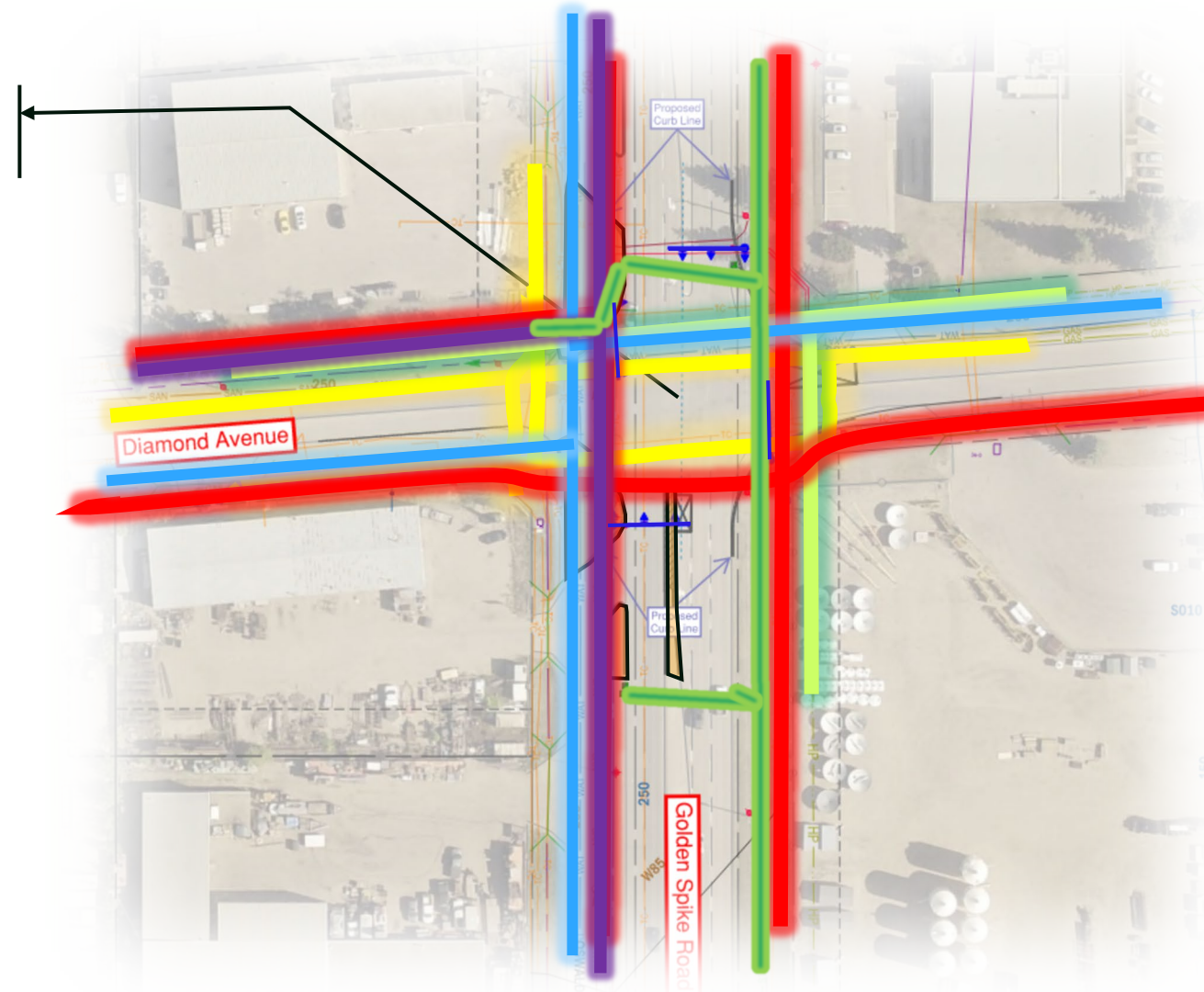
Existing utility clearances creating design challenges:

Fortis Street Lights and OHP

Gas distribution

City Sanitary, Water, and Storm

Design to be completed in 2026 with construction to follow - may extend into 2027 depending on complexity





NoTraffic

AI Driven traffic signal control

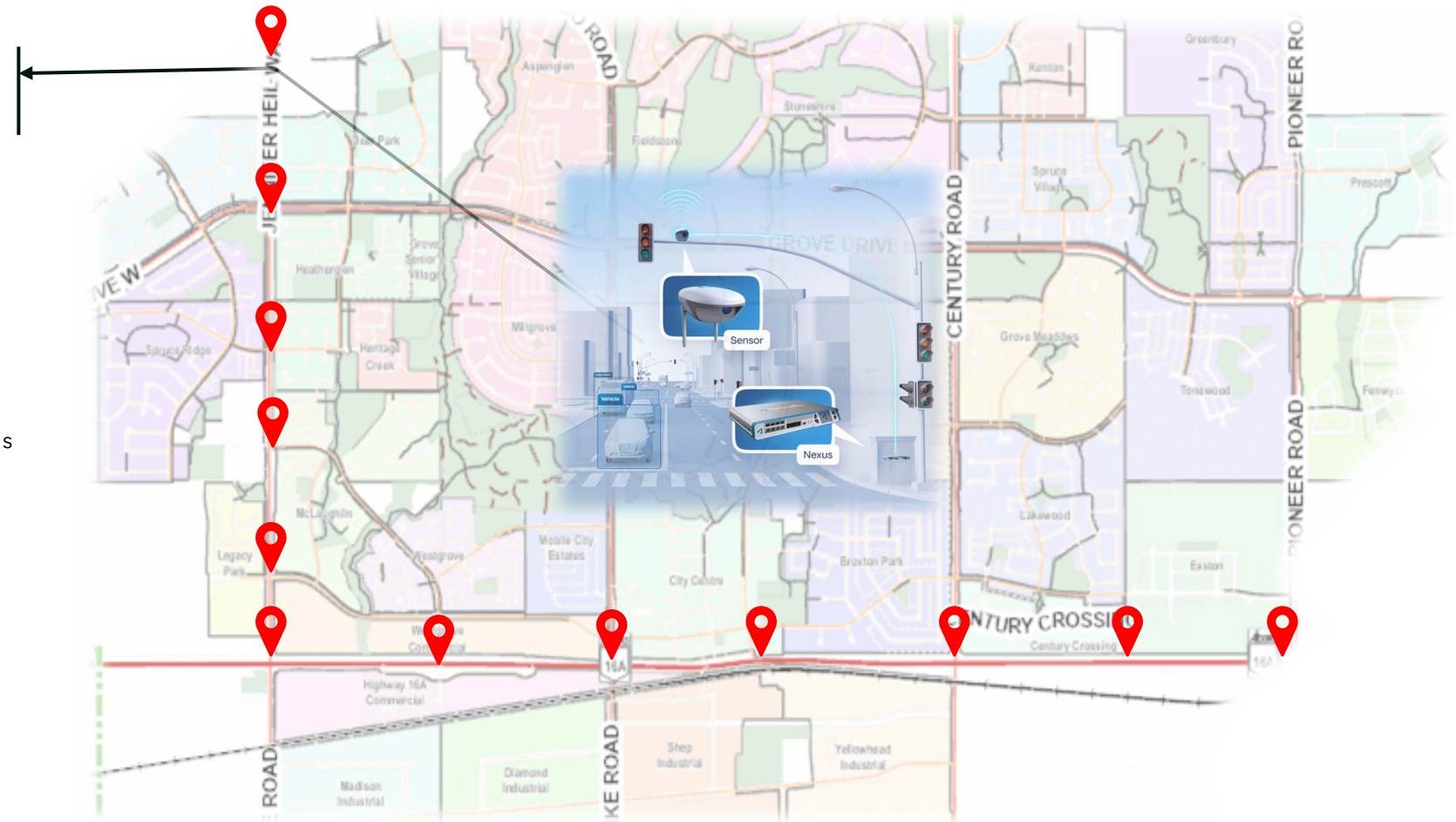
Deployment on 16A and Jennifer Heil Way
Cuts Delay & Congestion: Adaptive, real-time signal optimization

Improves Safety: Automated detection of vulnerable road users and red-light violators

Dynamically adjusts to changing traffic patterns

Efficiency: Cloud-based monitoring flags failures, reduces field visits, and shortens response times for signal issues.

Data-Driven Decisions: Provides continuous, high-resolution traffic data





McLaughlin Dog Creek Restoration

Erosion control required along failing banks

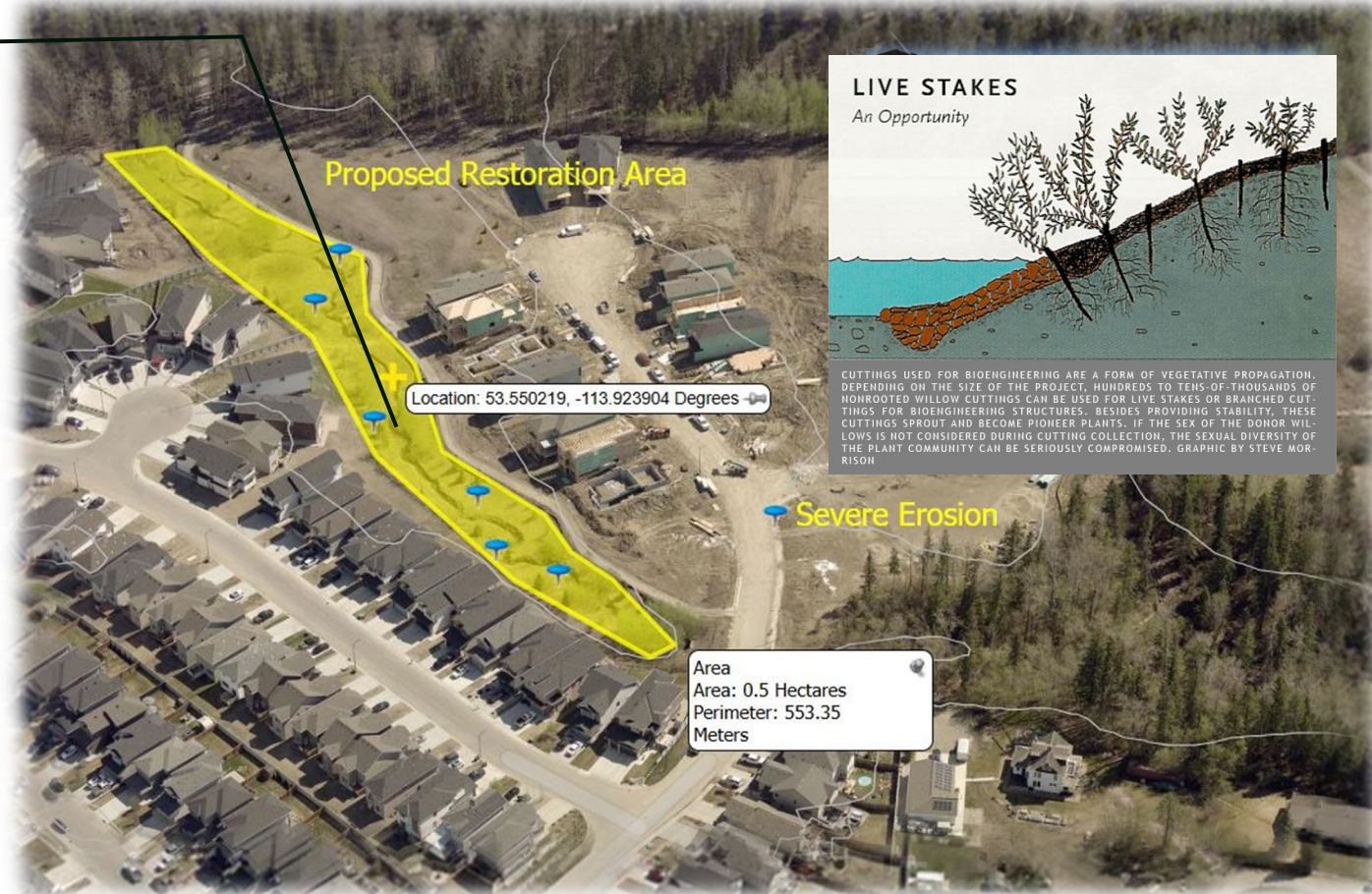
Significant bank erosion near private property

Traditional shoring techniques expensive and invasive

Engineering secured grant funding to conduct a bioengineering slope stabilization project

Live willow cuttings will be utilized to stabilize both banks - no heavy earthworks or conventional erosion control required

PW staff will have the opportunity to assist in installation, participate in training, and build capacity for future projects

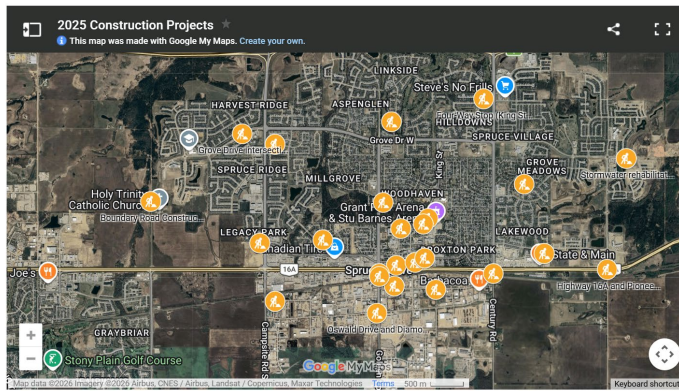




Construction Projects

Each year the City of Spruce Grove undertakes a range of construction projects to support and enhance community growth, development and safety for both residents and visitors. This can include the regular maintenance or replacement of existing infrastructure, as well as the addition of new features or amenities.

Information about this year's construction projects can be found below, including impacts related to roadways, utilities, buildings, parks and facilities. We understand that construction can impact the community and we thank you for your patience while we complete this work.



Thank You



**UNDER CONSTRUCTION
COMING SOON!**