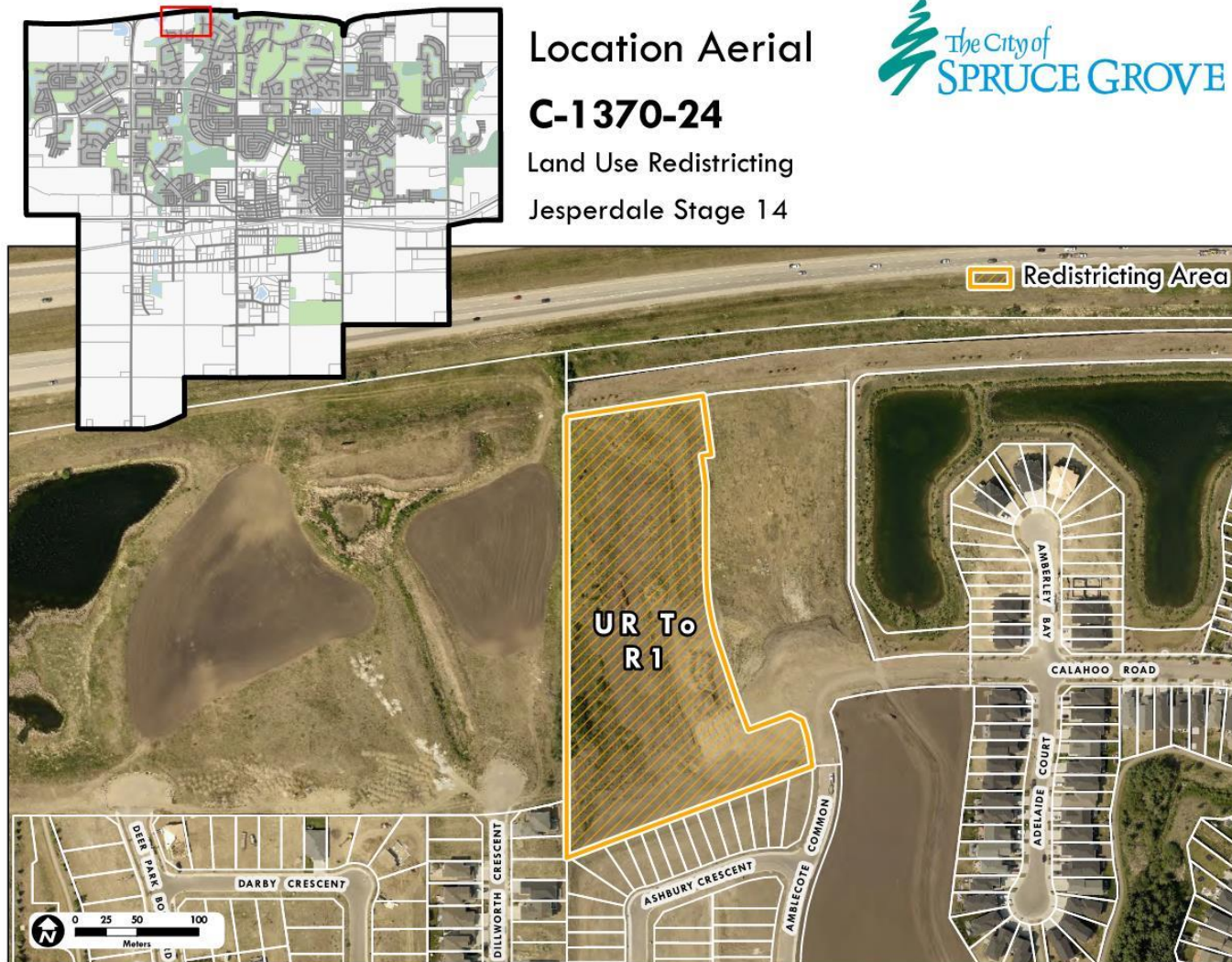


Bylaw C-1370-24 Land Use Bylaw Amendment Jesperdale Stage 14

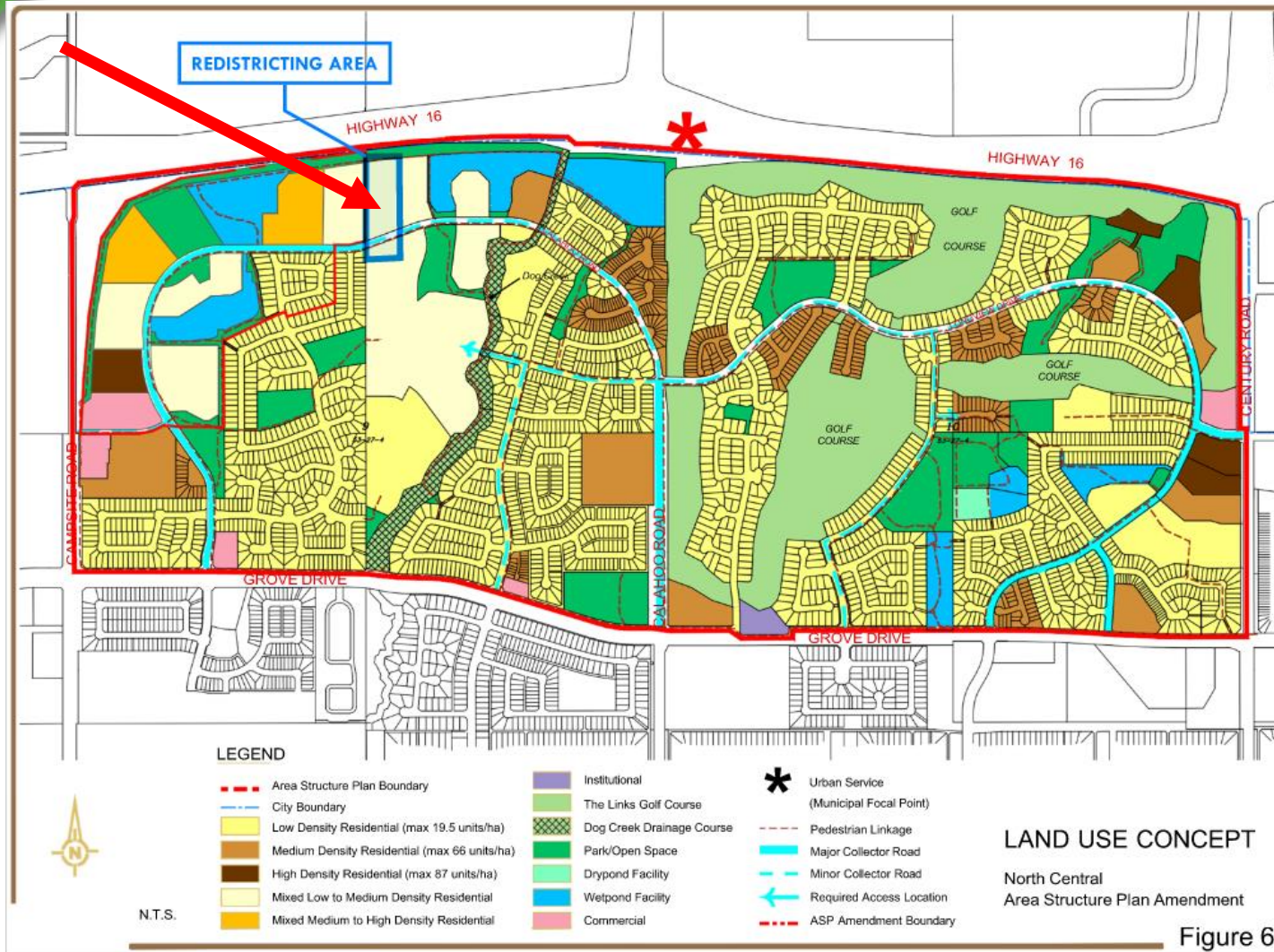
City of Spruce Grove
Third Reading
August 25, 2025

Location



- **Jesperdale Stage 14**
 - Intended Land Use:
 - Residential

North Central Area Structure Plan



- **Jesperdale Stage 14**
- Intended Land Use:
 - Residential

Figure 6

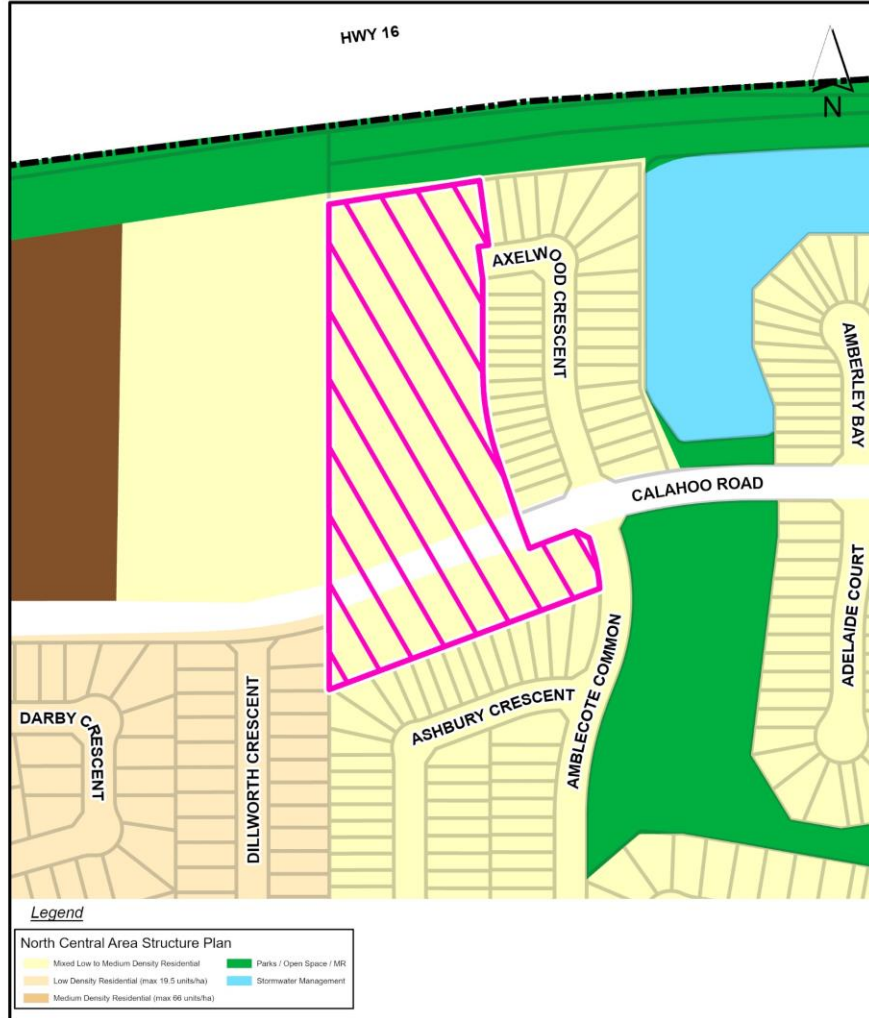
North Central Area Structure Plan



ASP Overview

Site of Proposed Redistricting C-1370-24

Jesperdale Stage 14 



➤ Land Use Concept

- Mixed Low to Medium Density Residential



Proposed Amendment

Legal Description:

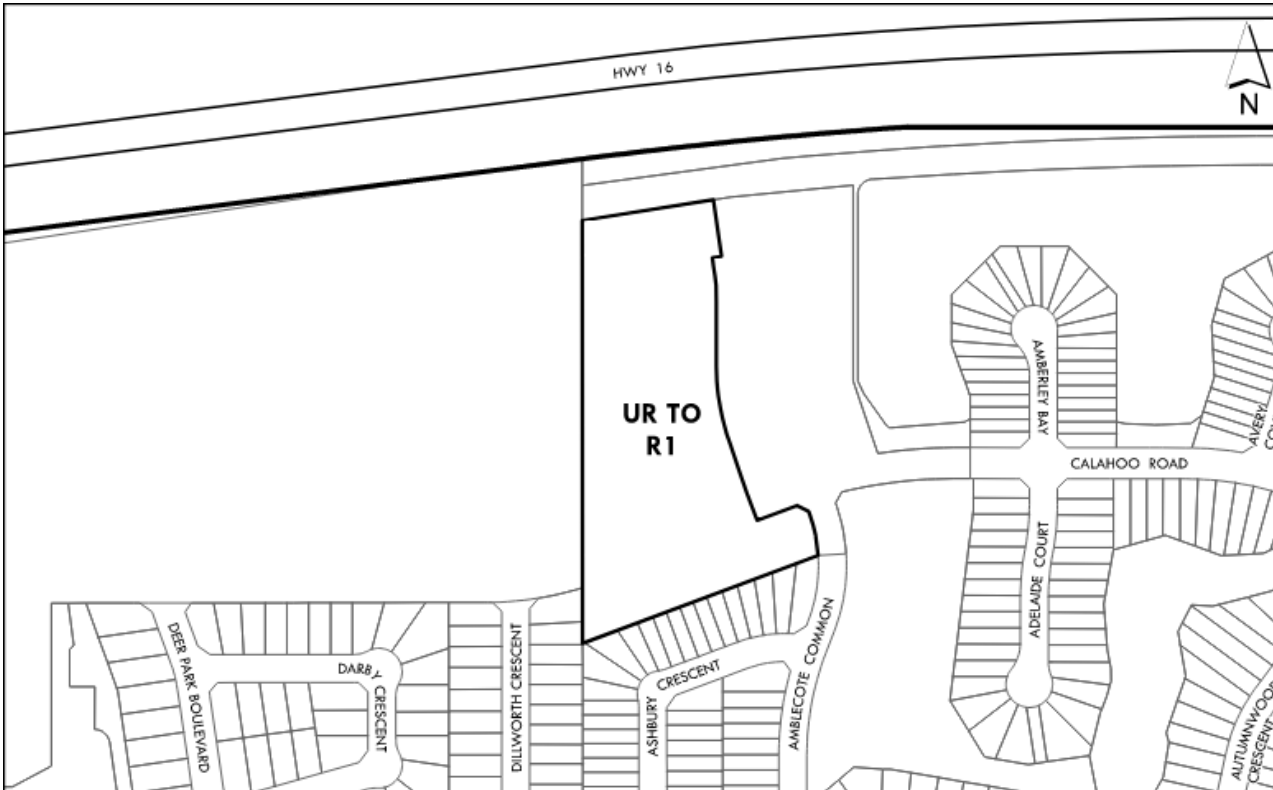
Part of Lot 23, Block 1, Plan 062 6301

Amendment Area: 2.61 ha

Proposed amendment

From: UR - Urban Reserve District

To: R1 - Mixed Low to Medium Density Residential District



Questions and Comments