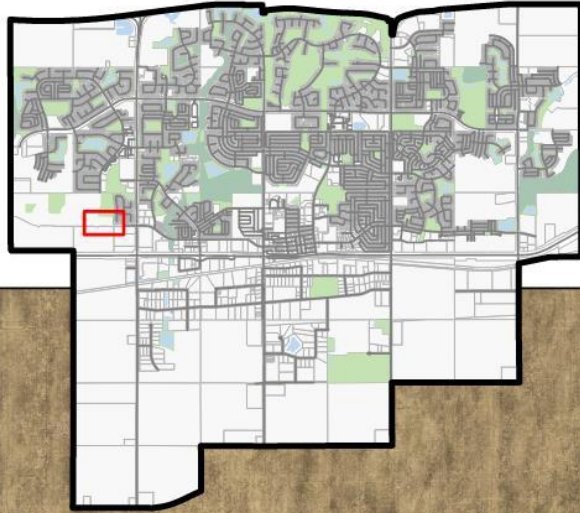


# Bylaw C-1406-25 Land Use Bylaw Amendment **Legacy Ridge Stage 3**

City of Spruce Grove  
Public Hearing  
July 7, 2025

# C-1406-25 - Location



Location Aerial

**C-1406-25**

Land Use Redistricting

Legacy Ridge Stage 3



## Legacy Ridge Stage 3

- Intended Land Use:
  - Medium to High Density Residential

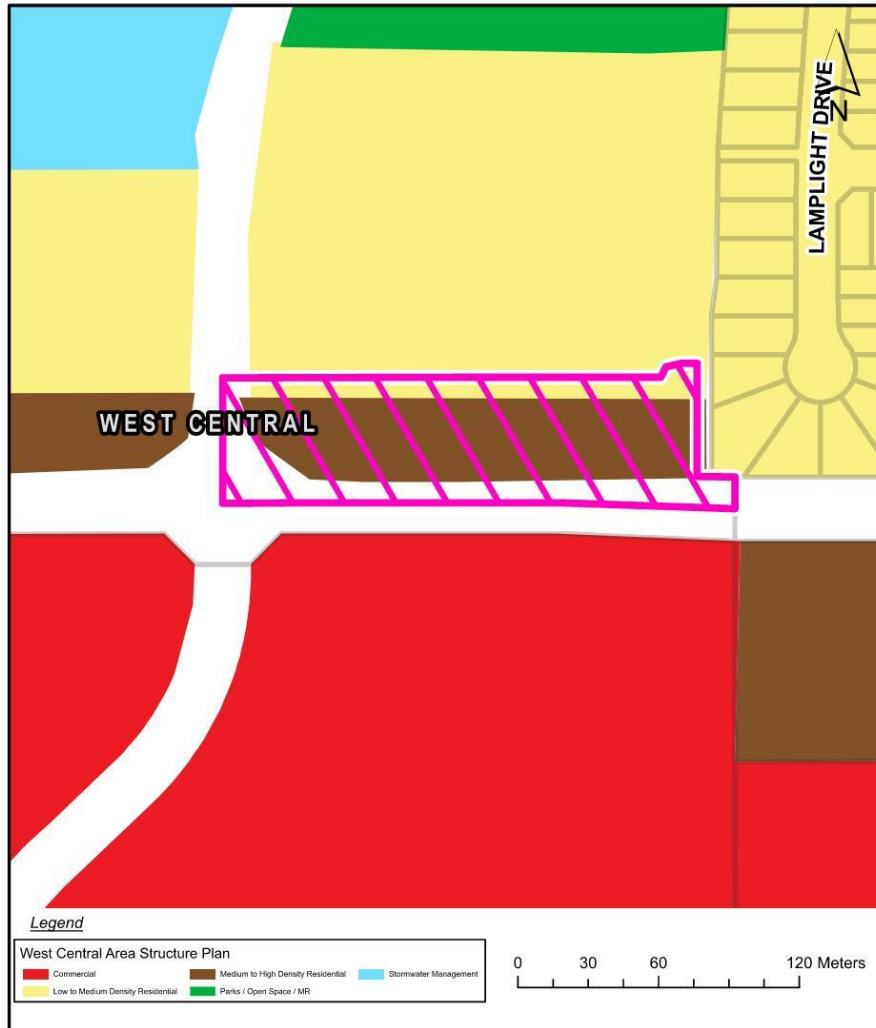


# West Central Area Structure Plan



## ASP Overview

Site of Proposed Redistricting C-1406-25  
Legacy Ridge Stage 3



- **Land Use Concept**
  - Mixed Medium to High Density Residential





# Proposed Amendment

## Legal Description:

Lot 2, Block 5, Plan 242 0200

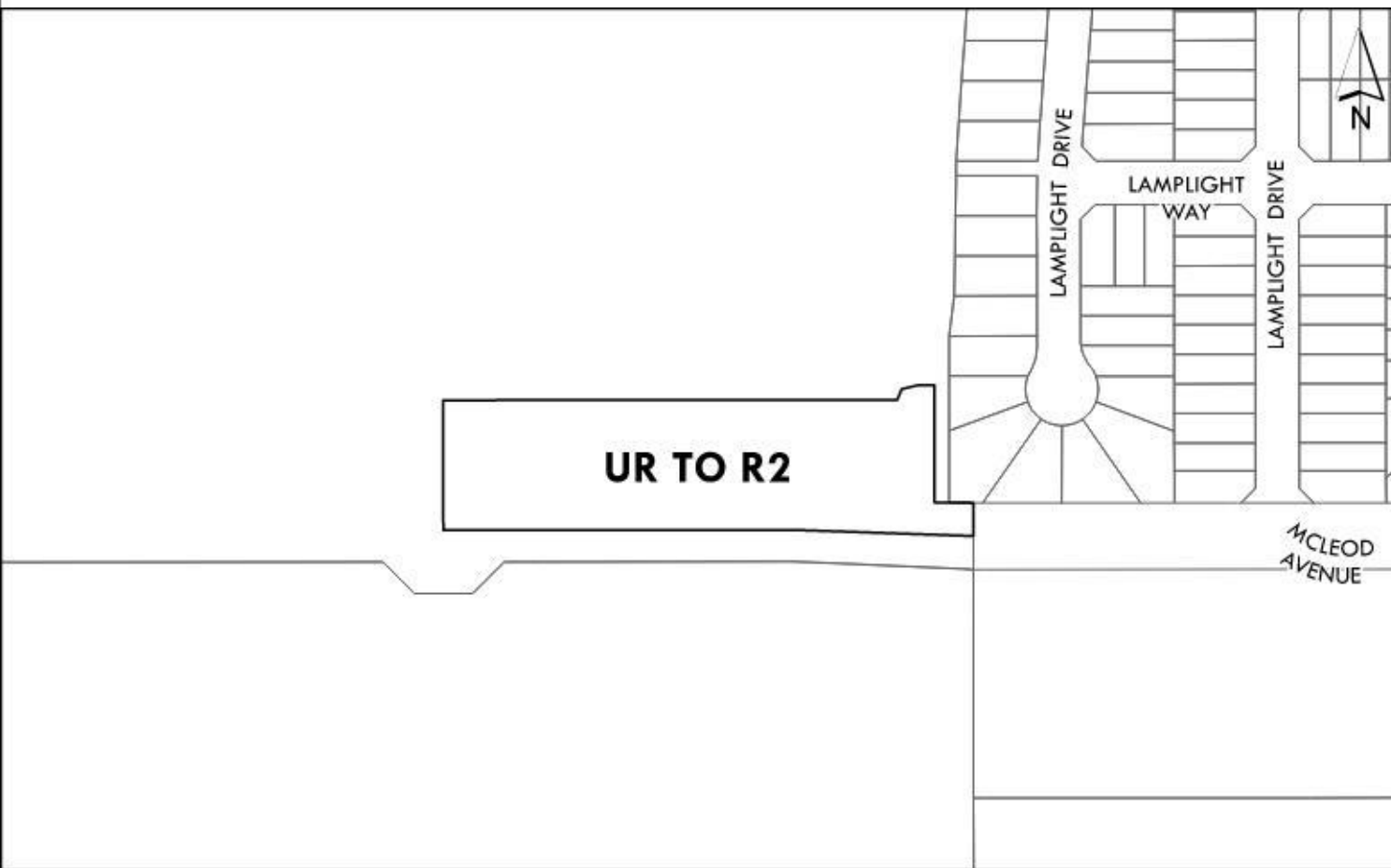
**Amendment Area: 1.1 ha**

## Proposed Amendment

From: UR – Urban Reserve

To:

R2 – Mixed Medium to High Density Residential District

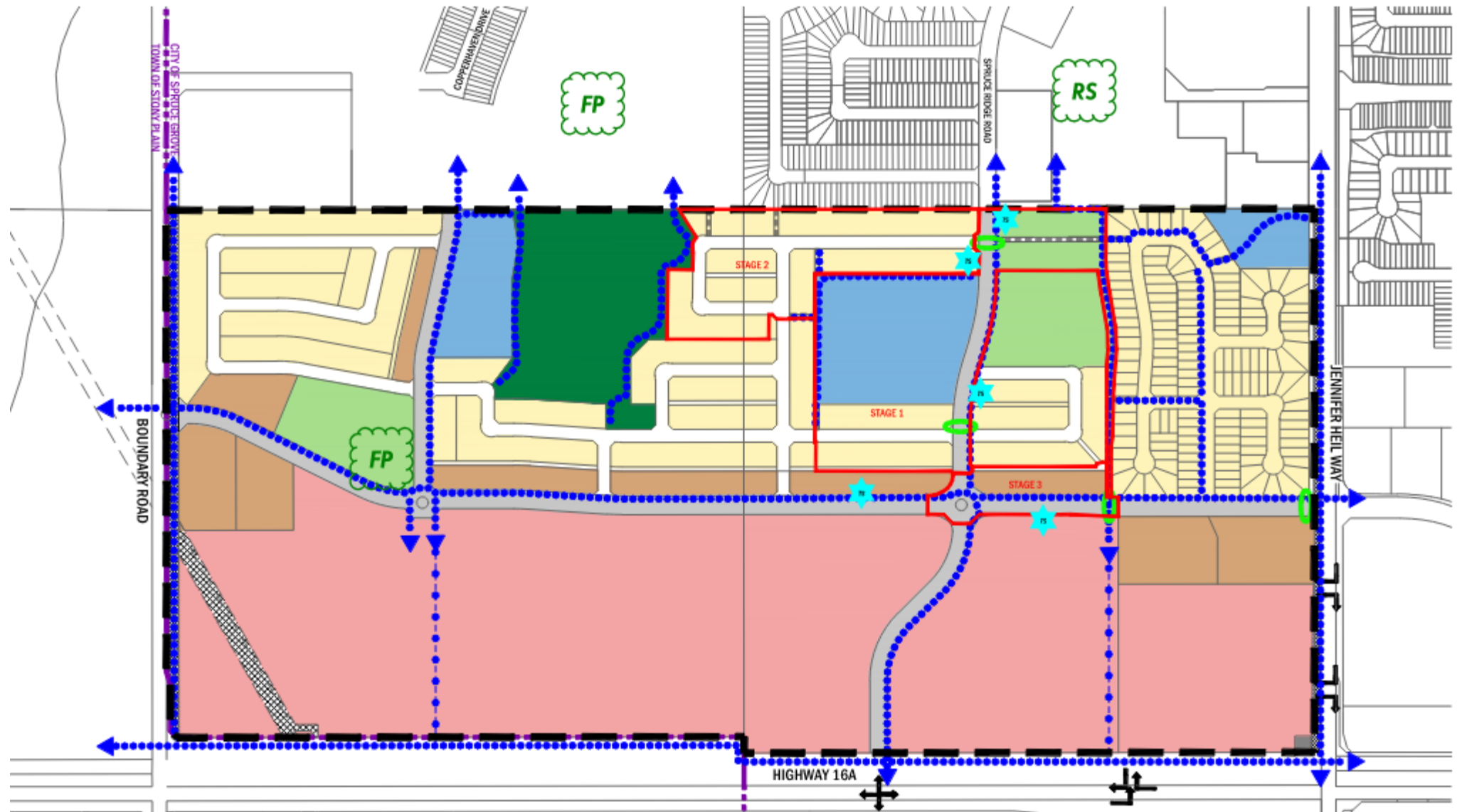


# Neighbourhood Context Map - DRAFT

**RS** – Rotary  
Playscape

**FP** – Anticipated  
Future Playground

**TS** – Transit Stop  
Location



# Questions and Comments