

Bylaw C-1367-24 Land Use Bylaw Amendment **Easton Stage 6**

City of Spruce Grove
Third Reading
May 12, 2025

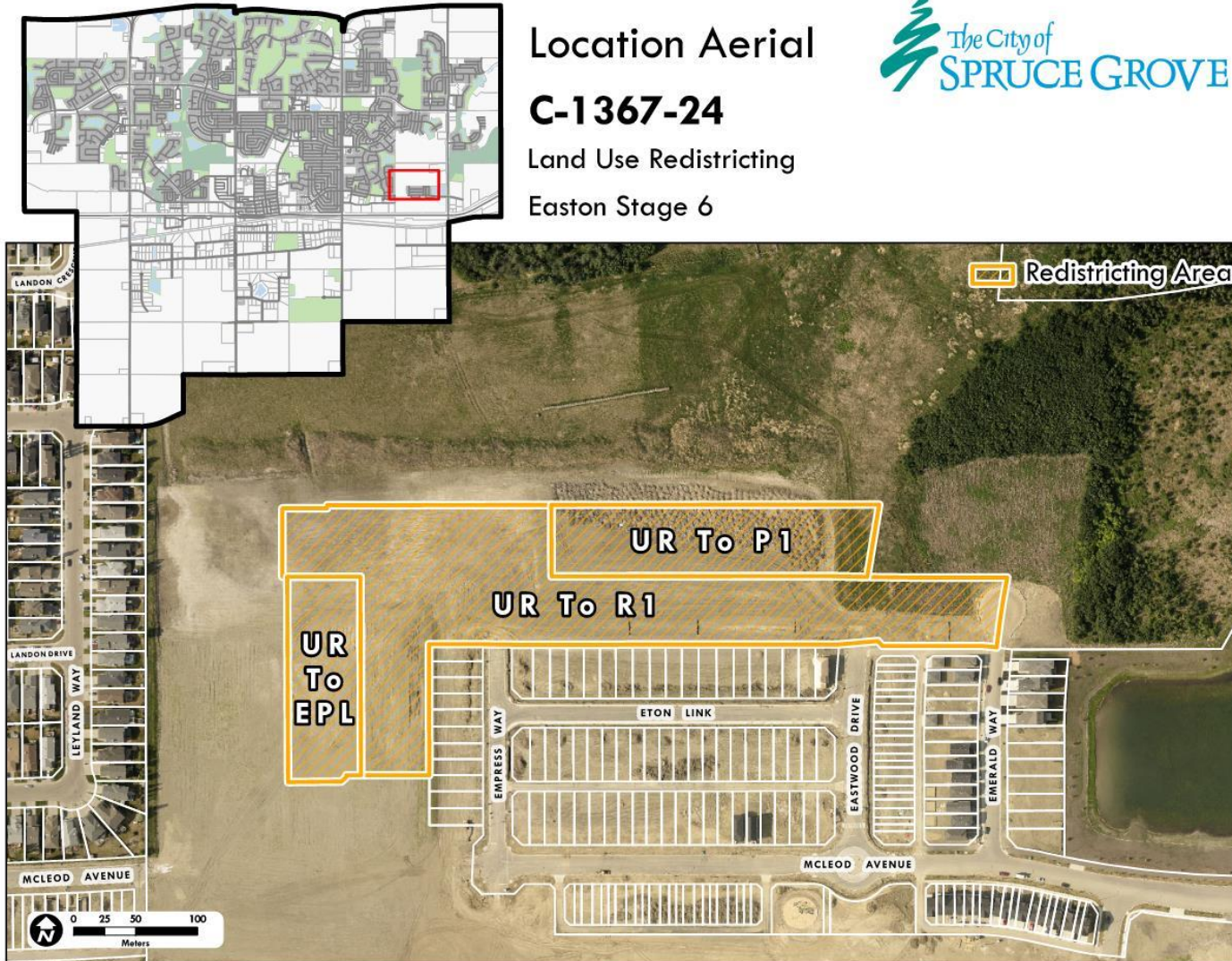
Location

Location Aerial

C-1367-24

Land Use Redistricting

Easton Stage 6



➤ Easton Stage 6

- Intended Land Use:
 - Low to Medium Density Residential
 - Park



Proposed Amendment

Legal Description:

SE 2-53-27-W4

Amendment Area: 4.1 ha

Proposed Amendment

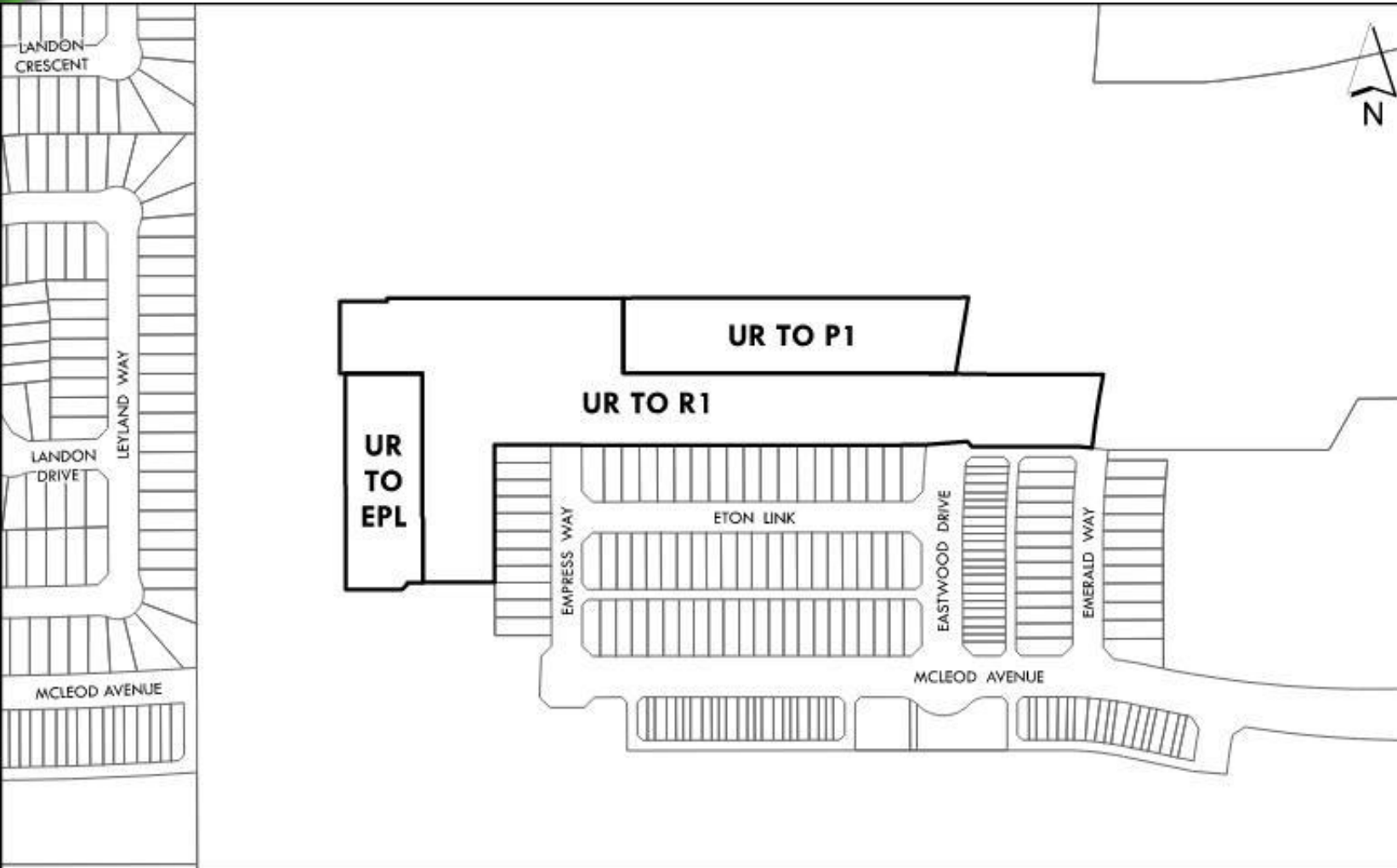
From: UR – Urban Reserve

To:

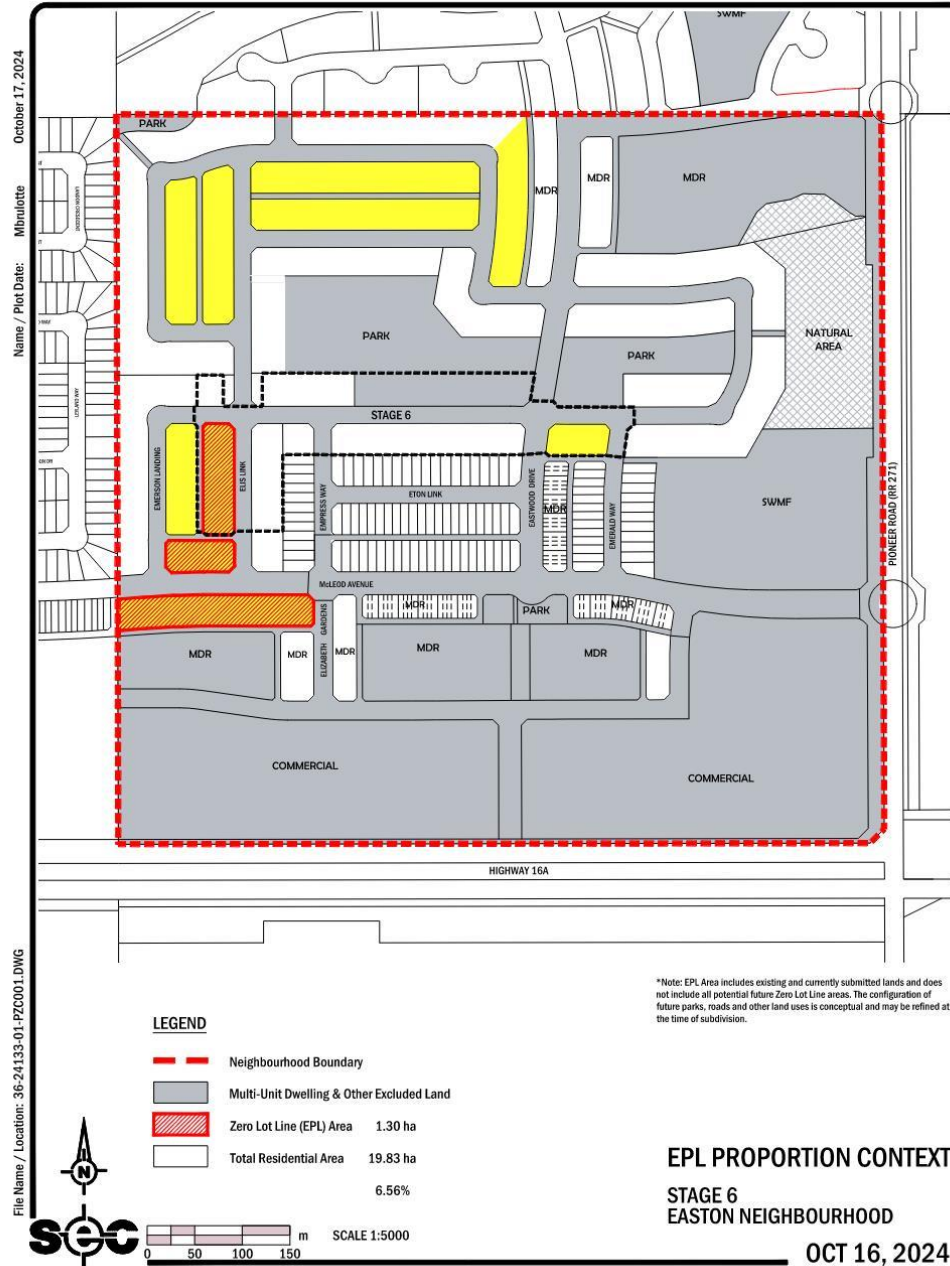
R1 – Mixed Low to Medium Density Residential District (2.7 ha)

EPL – Easton Planned Lot District (0.6 ha)

P1 – Parks and Recreation District (0.9 ha)



Zero Lot Line Context Map - Easton



EPL Areas

Existing and Proposed: 1.3 ha

Total Residential: 19.8 ha

Percentage EPL: 6.56%

Questions and Comments