

Bylaw C-1372-25

Land Use Bylaw Amendment

Greenbury Stage 15

City of Spruce Grove
Public Hearing
April 28, 2025

Location



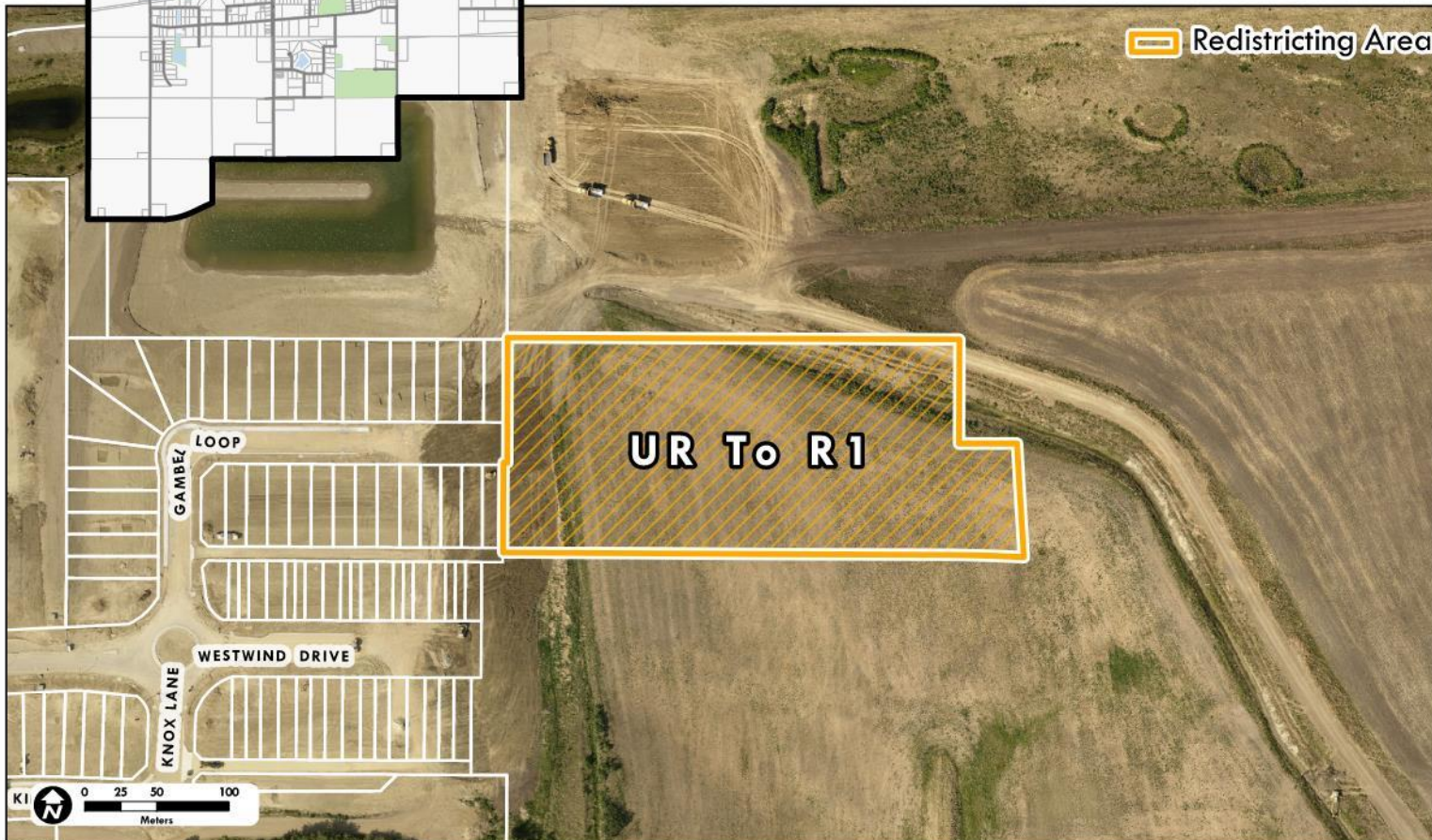
Location Aerial
C-1372-25

Land Use Redistricting
Greenbury Stage 15

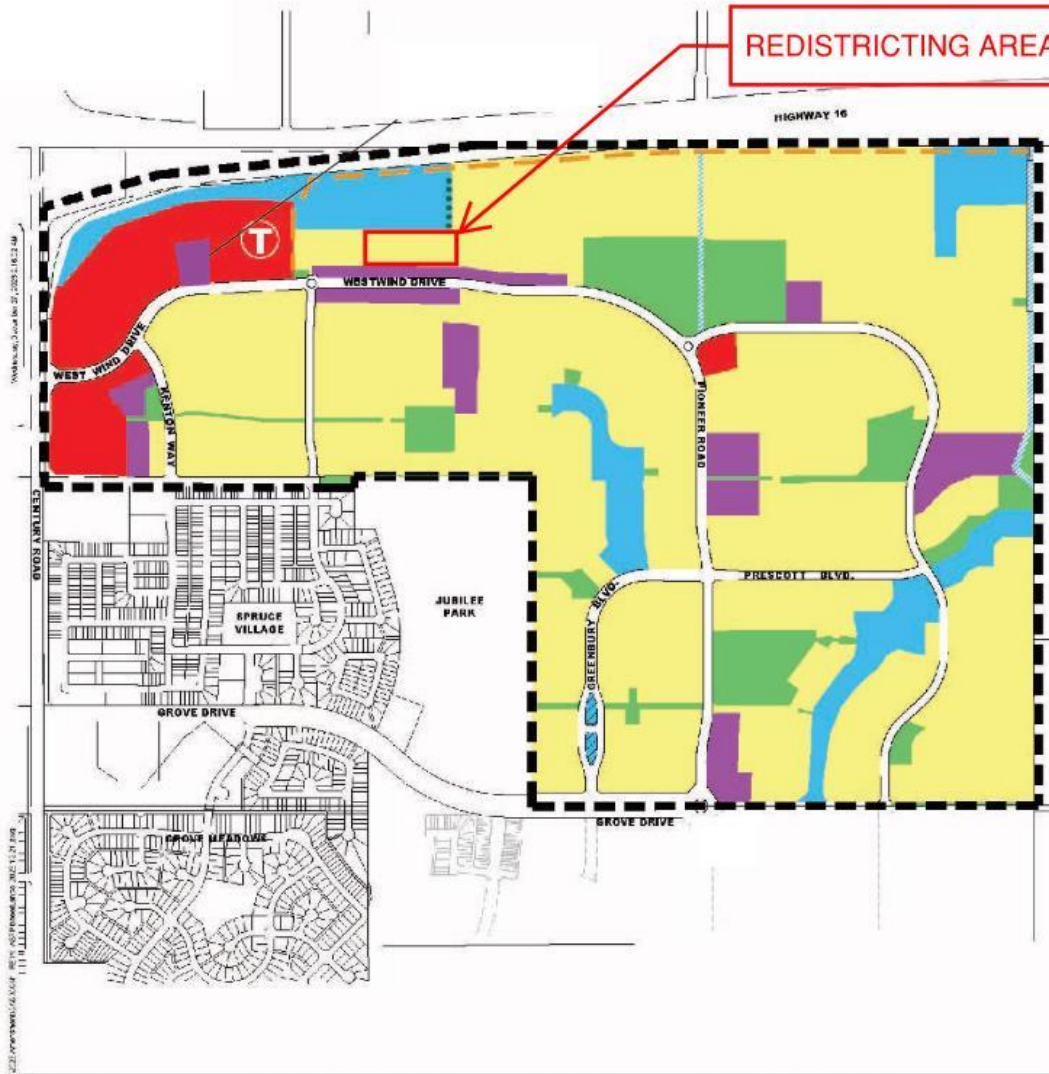


➤ Greenbury Stage 15

- Intended Land Use:
 - Mixed Low to Medium Density Residential



Pioneer Lands Area Structure Plan



LEGEND

Commercial	Park/Open Space	ASP Boundary
Medium to High Density Residential	Term	ASP Amendment Area
Low to Medium Density Residential	Medium PUL	Transit Station
Storm Management Facility	Public Utility Lot (PUL)	Storm Management Facility
		Street Frontage

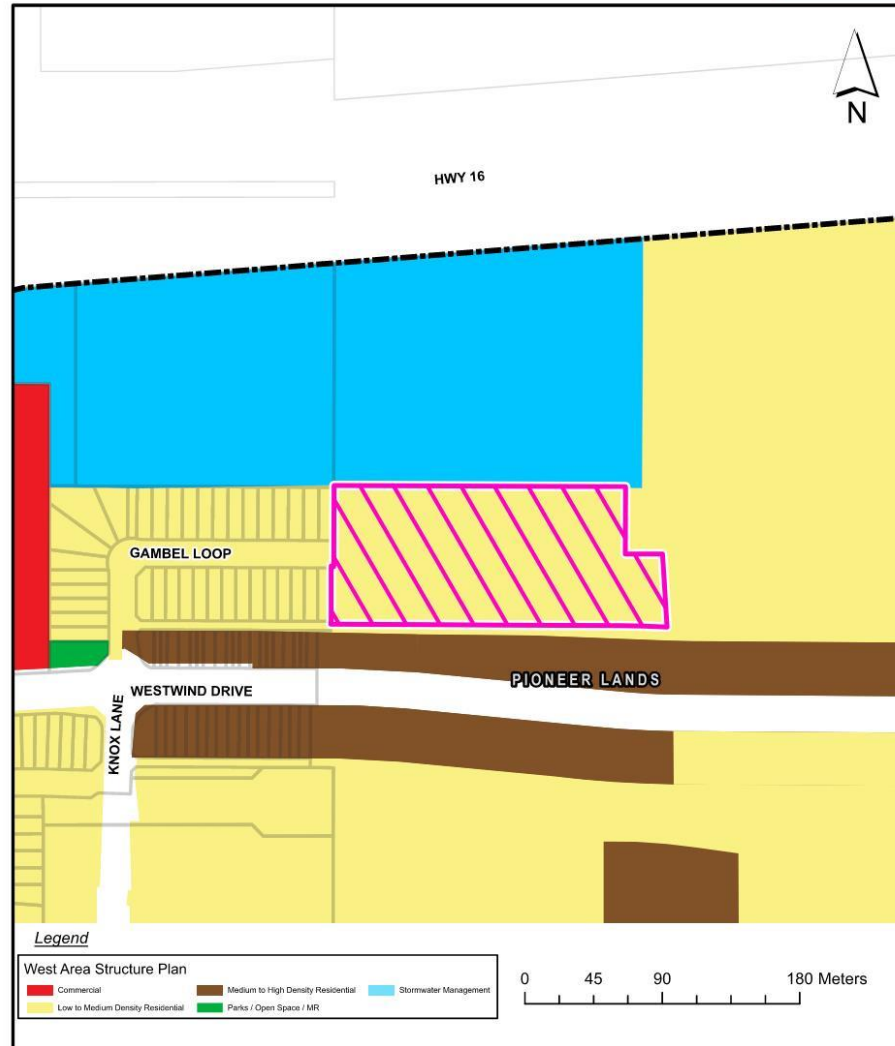
- **Land Use Concept**
 - Mixed Low to Medium Density Residential

Pioneer Lands Area Structure Plan



ASP Overview

Site of Proposed Redistricting C-1372-25
Greenbury Stage 15



- **Land Use Concept**
 - Mixed Low to Medium Density Residential



C-1372-25 – Redistricting Greenbury Stage 15

Legal Description:

Lot 3, Block A, Plan 242 0044

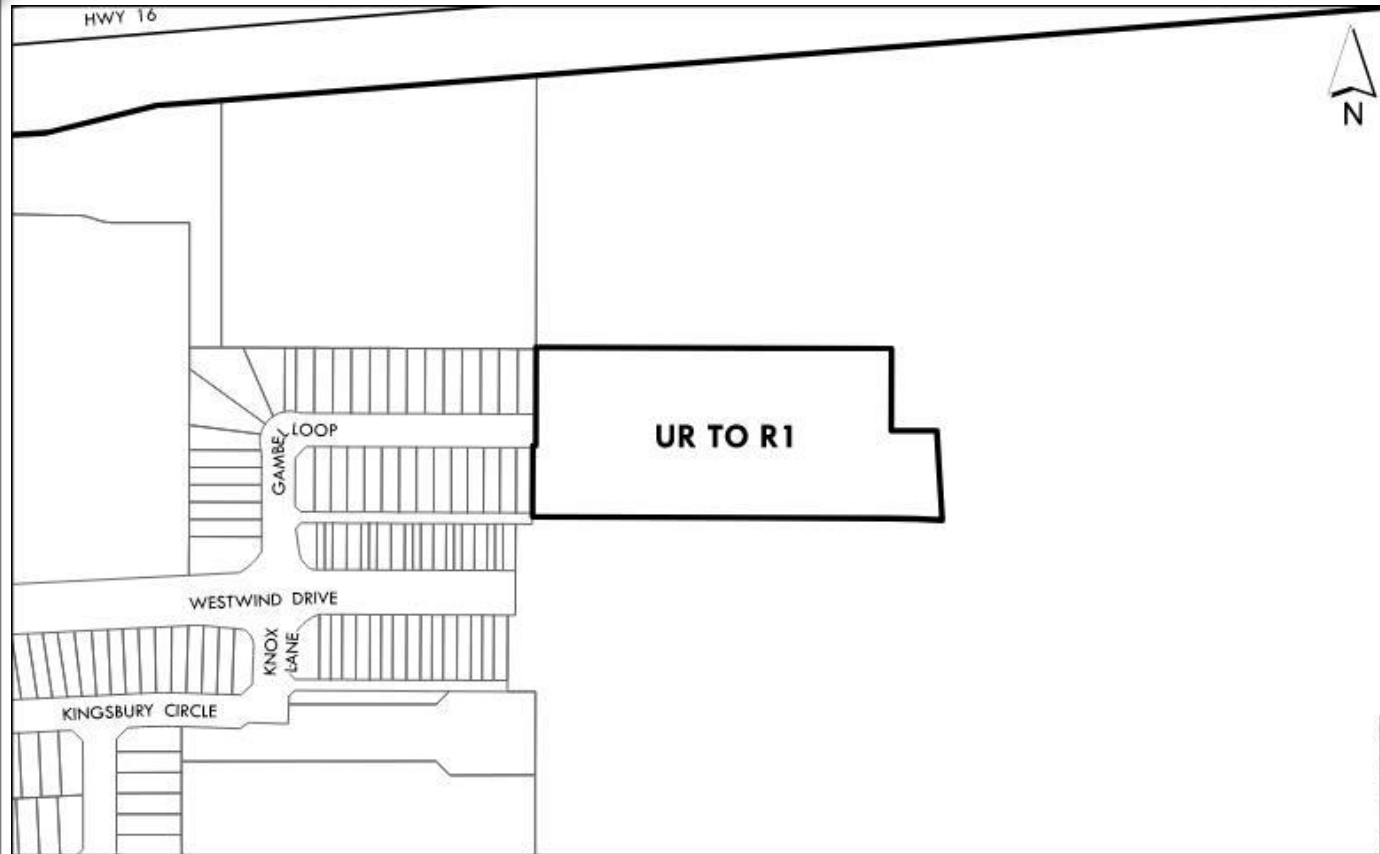
Amendment Area: 2.0 ha

Proposed amendment

UR – Urban Reserve District

To:

R1 – Mixed Low to Medium Density
Residential District





Thank you

Questions & Comments