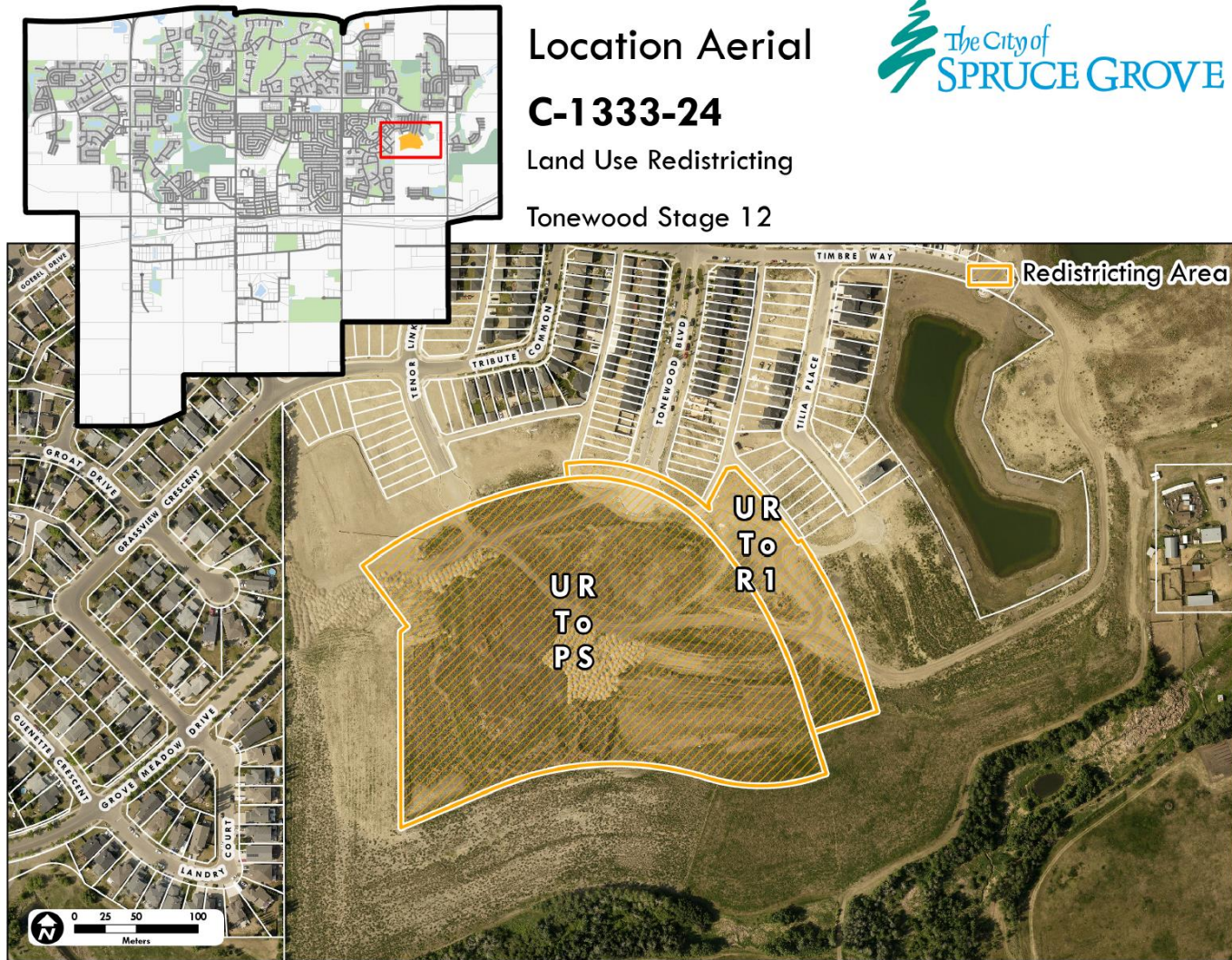


Bylaw C-1333-24 Land Use Bylaw Amendment **Tonewood Stage 12**

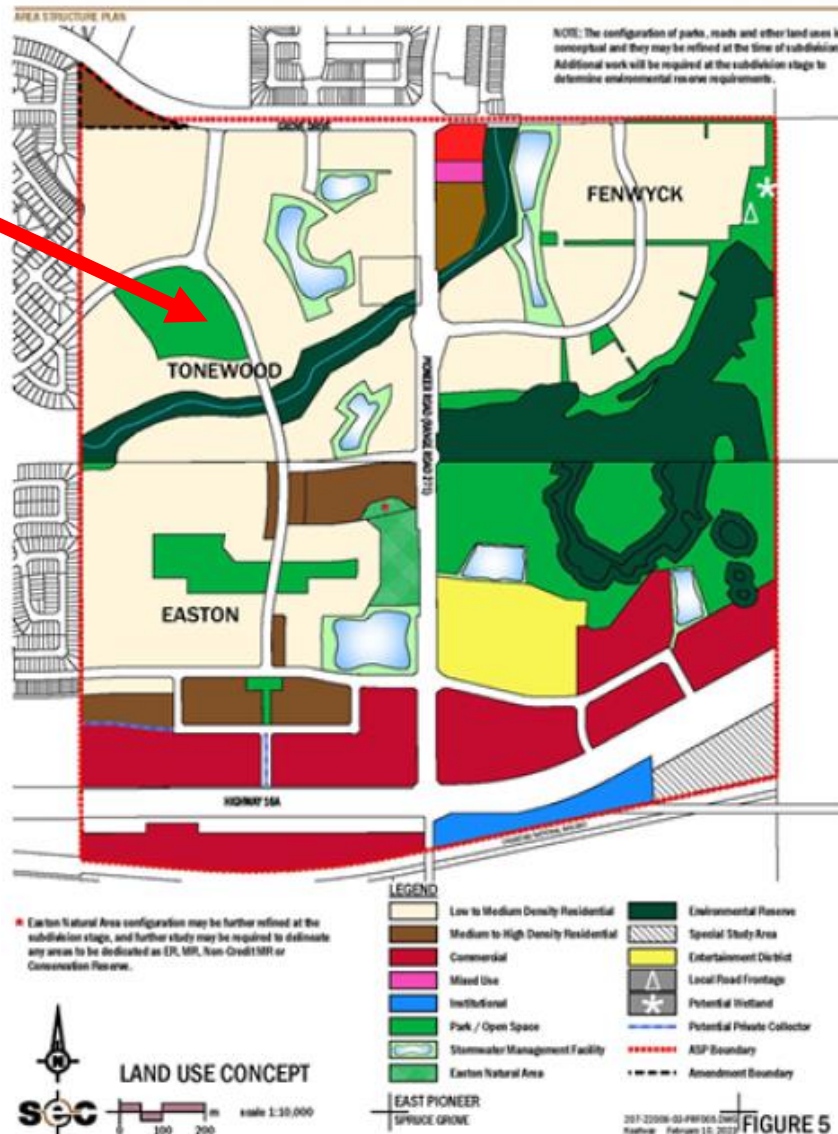
City of Spruce Grove
Third Reading
Bylaw C-1333-24
April 28, 2025

Location



- **Tonewood Stage 12**
- Intended Land Use:
 - Residential
 - Future School Site and Park/Open Space


East Pioneer Area Structure Plan

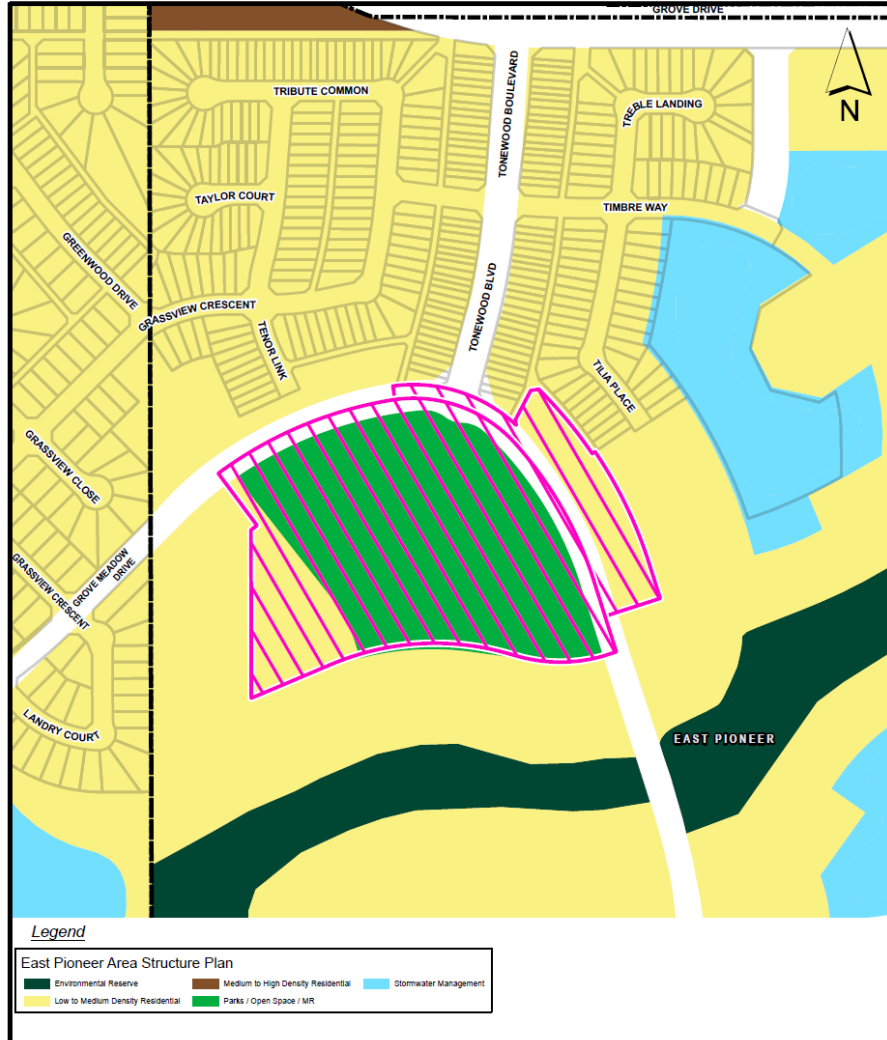


- **Tonewood Stage 12**
 - Intended Land Use:
 - Residential
 - Park/Open Space
 - Future School Site

East Pioneer Area Structure Plan

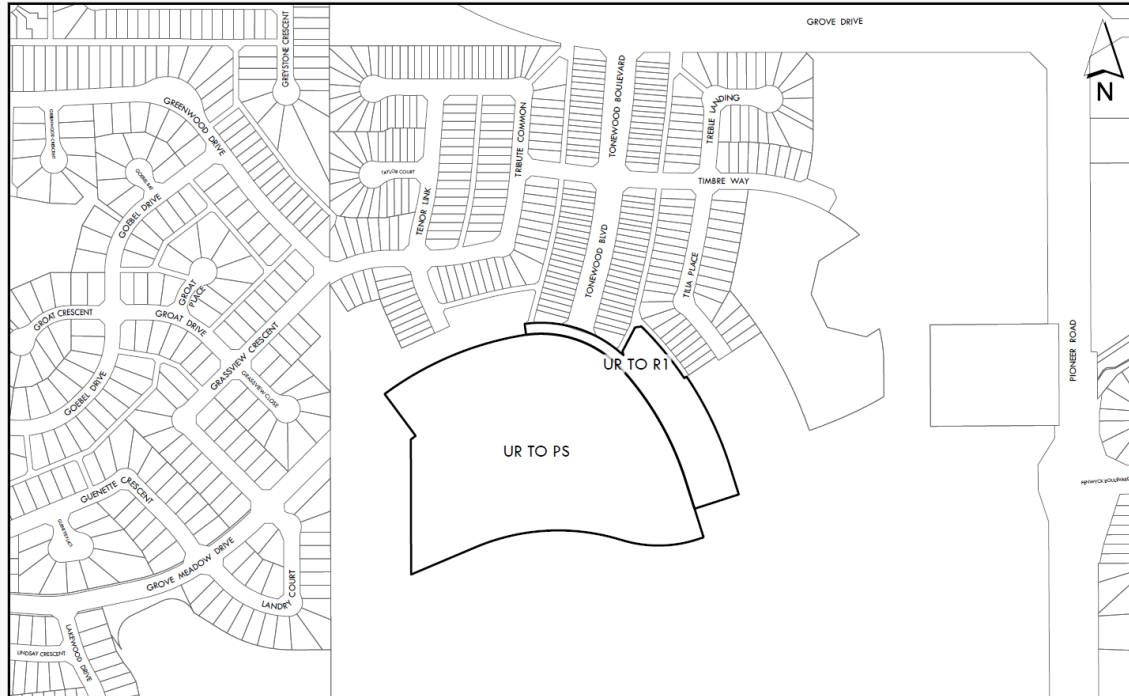


ASP Overview
Site of Proposed Redistricting C-1333-24
Tonewood Stage 12 



- **Land Use Concept**
- Mixed Low to Medium Density Residential
 - Park/Open Space

Proposed Amendment



Legal Description:

Part of Lot 5, Block 1, Plan 172 3540

Amendment Area: 7.23 ha

Proposed amendment

From: UR - Urban Reserve District

To: R1 - Mixed Low to Medium Density Residential District

PS- Public Service Institutional District

Questions and Comments