



Parkland RCMP: Q2 (July - Sept) 2024 Update

The City of Spruce Grove

October 21, 2024

Spruce Grove Municipal Detachment

Crime Statistics (Actual)

January to Q3: 2020 - 2024

All categories contain "Attempted" and/or "Completed"

October 8, 2024

CATEGORY	Trend	2020	2021	2022	2023	2024	% Change 2020 - 2024	% Change 2023 - 2024	Avg File +/- per Year
Offences Related to Death		0	2	1	0	3	N/A	N/A	0.4
Robbery		10	3	3	14	12	20%	-14%	1.5
Sexual Assaults		30	32	30	41	27	-10%	-34%	0.3
Other Sexual Offences		27	25	26	30	19	-30%	-37%	-1.1
Assault		201	270	230	281	279	39%	-1%	16.7
Kidnapping/Hostage/Abduction		4	1	4	6	2	-50%	-67%	0.1
Extortion		3	9	12	21	20	567%	-5%	4.6
Criminal Harassment		66	77	89	77	94	42%	22%	5.6
Uttering Threats		89	115	125	113	104	17%	-8%	2.8
TOTAL PERSONS		430	534	520	583	560	30%	-4%	30.9
Break & Enter		124	86	128	139	149	20%	7%	10.3
Theft of Motor Vehicle		110	60	93	91	140	27%	54%	9.1
Theft Over \$5,000		13	19	30	43	29	123%	-33%	5.6
Theft Under \$5,000		547	465	535	653	565	3%	-13%	22.4
Possn Stn Goods		60	48	49	60	82	37%	37%	5.6
Fraud		229	231	206	244	242	6%	-1%	3.9
Arson		5	13	9	9	9	80%	0%	0.4
Mischief - Damage To Property		271	295	301	282	251	-7%	-11%	-5.3
Mischief - Other		182	250	285	375	343	88%	-9%	44.7
TOTAL PROPERTY		1,541	1,467	1,636	1,896	1,810	17%	-5%	96.7
Offensive Weapons		24	29	32	47	28	17%	-40%	2.6
Disturbing the peace		226	189	241	278	269	19%	-3%	17.5
Fail to Comply & Breaches		105	71	87	77	110	5%	43%	1.6
OTHER CRIMINAL CODE		118	84	94	82	98	-17%	20%	-4.2
TOTAL OTHER CRIMINAL CODE		473	373	454	484	505	7%	4%	17.5
TOTAL CRIMINAL CODE		2,444	2,374	2,610	2,963	2,875	18%	-3%	145.1

CATEGORY	Trend	2020	2021	2022	2023	2024	% Change 2020 - 2024	% Change 2023 - 2024	Avg File +/- per Year
Drug Enforcement - Production		0	0	1	0	1	N/A	N/A	0.2
Drug Enforcement - Possession		31	26	38	37	37	19%	0%	2.3
Drug Enforcement - Trafficking		44	40	40	25	18	-59%	-28%	-6.7
Drug Enforcement - Other		0	2	2	3	1	N/A	-67%	0.3
Total Drugs		75	68	81	65	57	-24%	-12%	-3.9
Cannabis Enforcement		9	4	4	5	4	-56%	-20%	-0.9
Federal - General		20	36	15	33	35	75%	6%	2.7
TOTAL FEDERAL		104	108	100	103	96	-8%	-7%	-2.1
Liquor Act		71	53	49	37	38	-46%	3%	-8.2
Cannabis Act		21	17	11	10	5	-76%	-50%	-3.9
Mental Health Act		340	356	413	368	403	19%	10%	13.8
Other Provincial Stats		522	601	624	562	547	5%	-3%	1.1
Total Provincial Stats		954	1,027	1,097	977	993	4%	2%	2.8
Municipal By-laws Traffic		8	22	8	14	25	213%	79%	2.6
Municipal By-laws		270	193	172	149	150	-44%	1%	-28.4
Total Municipal		278	215	180	163	175	-37%	7%	-25.8
Fatals		0	1	0	1	3	N/A	200%	0.6
Injury MVC		95	74	98	123	95	0%	-23%	4.9
Property Damage MVC (Reportable)		413	418	465	473	458	11%	-3%	14.5
Property Damage MVC (Non Reportable)		53	58	67	76	74	40%	-3%	6.0
TOTAL MVC		561	551	630	673	630	12%	-6%	26.0
Roadside Suspension - Alcohol (Prov)		0	62	29	16	36	N/A	125%	2.6
Roadside Suspension - Drugs (Prov)		0	1	2	5	6	N/A	20%	1.6
Total Provincial Traffic		1,975	1,987	1,633	1,645	1,790	-9%	9%	-71.2
Other Traffic		55	11	10	4	7	-87%	75%	-10.3
Criminal Code Traffic		162	73	40	51	69	-57%	35%	-20.8
Common Police Activities									
False Alarms		161	158	173	159	209	30%	31%	9.7
False/Abandoned 911 Call and 911 Act		1,133	986	610	574	256	-77%	-55%	-216.6
Suspicious Person/Vehicle/Property		369	385	390	476	474	28%	0%	30.1
Persons Reported Missing		65	77	92	70	79	22%	13%	2.1
Search Warrants		4	6	3	4	2	-50%	-50%	-0.6
Spousal Abuse - Survey Code (Reported)		488	430	415	377	443	-9%	18%	-14.3
Form 10 (MHA) (Reported)		37	39	35	24	39	5%	63%	-1.1

Annual Performance Plan

- Crime Reduction
 - Arrests on Warrant Apprehensions - 83 out of 100
 - Foot & Bike Patrols - 45 out of 48
 - Checkstops - 7 out of 32
- Communicate Effectively
 - Facebook Followers - 1606 out of 1500
 - Community Engagement - 70 out of 100
 - School Visits - 38 out of 200

PARKLAND CRIME REDUCTION UNIT



Crime Reduction Through Targeted Enforcement

-Our belief is that by targeting our prolific fugitives, we will encounter associates and properties that are also heavily linked to criminal activity, and this will lead to new investigations and crime disruption.

-We have recovered 38 stolen vehicles during this year's reporting period and conducted three search warrants at known properties linked to property crime.

-Parkland CRU is a small team that consistently puts forward a high number of arrests and proactive work. However, we rely on our partner agencies to assist us with intelligence sharing and coordinated enforcement.

-This winter we intend to increase our number of conditions checks in conjunction with Probation and Parole offices. The same strategy of crime reduction through targeted enforcement is our goal.



Who is the C.R.U

- C.R.U consists of 4 officers. (One Cpl. Supervisor and 3 Constables)
- Mandate is primarily focused on reducing crime through 'Fugitive Apprehension'.
- Team works in both plain clothes and uniform capacity. Targets priority offenders who are wanted on numerous outstanding warrants.
- Since October 2023 we have focused on fugitive apprehension. Our team has noted we consistently disrupt ongoing crimes besides those the offenders are wanted for. (Example; Many wanted offenders we encounter are found to be in possession of stolen vehicles, firearms, weapons etc.)
- Since October of 2023, our team has arrested 160 offenders on warrants compared to 24 and 18 wanted offenders in the previous two years.

FACEBOOK

Royal Canadian Mounted Police in Alberta Parkland

- Crime Prevention Tips
- Latest Crime Trends
- Emergency Alerts
- Local Investigations



Community Involvement

- 70 presentations completed since April 1, 2024
 - Fraud presentations
 - Judging science fair
 - Canada Day celebrations at Jubilee Park
 - Scoops with a Cop - Log Cabin
 - Agra Fair parade and trade show
 - Alberta Day celebration at Jubilee Park





Crime Stoppers Crime Map / Carte du Crime

Displays the past 14 days / Affiche les 14 derniers jours - ZOOM IN to see points

CRIME STOPPERS

[SUBMIT A TIP](#)

[DONATE](#)

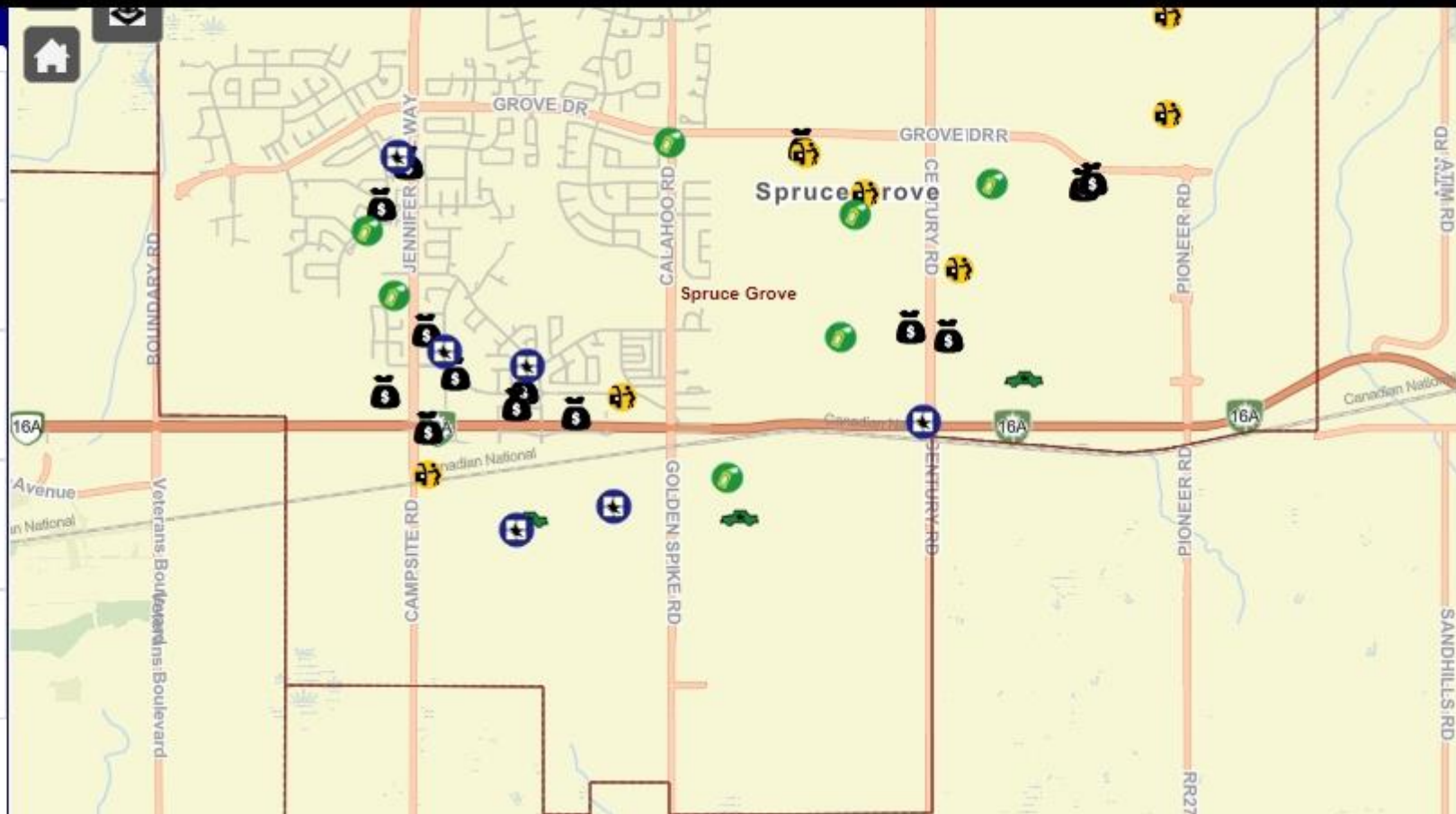
[CRIME MAP](#)

[PROJECT LOCKUP](#)

[CRIME STOPPERS C](#)

Reported Events

	Mischief / Méfait	7
	Break and Enter / Introduction par Effraction	6
	Theft From Motor Vehicle / Vol dans un Véhicule à Moteur	8
	Theft Over/Under \$5000 / Vol Sur/Sous \$5000	14
	Theft of Motor / Vehicle Véhicule Volé	3



Crime Prevention Through Environmental Design

- Uses the management of built and natural environments.
- Strategies that aim to reduce victimization, deter offender decisions, reduce crime.
- Services provided by RCMP and/or Community Peace Officers.



Collision Reporting Centre

- Located in the Protective Services Building
- Open Monday to Friday from 8:30 am to 4:30 pm
- Bring vehicle, registration, insurance, driver's licence, information exchanged with other driver, witness information & passenger information



Questions?

Insp. Kevin McGillivray
OIC Parkland RCMP

