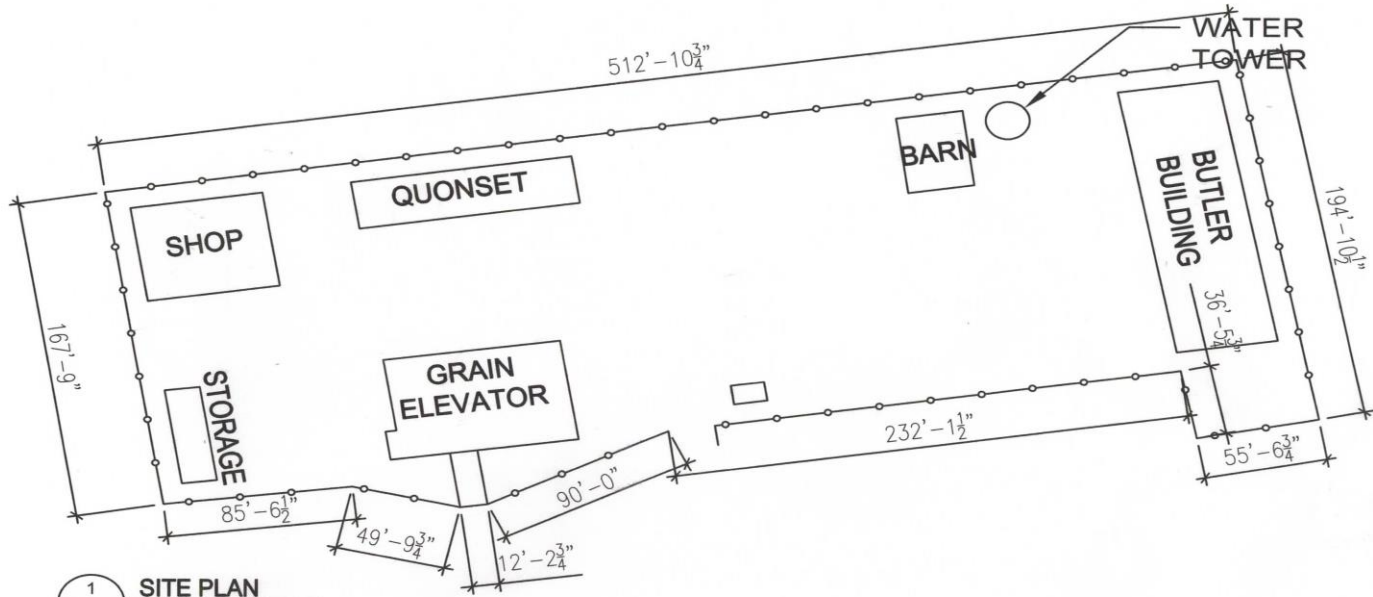




# Completing Machinery Row





1 SITE PLAN  
A1.0 SCALE: 1/64"=1'-0"



2 GOOGLE IMAGE  
A1.0 SCALE: NTS

# Display Area

- the fire engine and hose trailer donated by the Spruce Grove Volunteer Fire Dept, 2020.07.116.003 engine, and 2020.10.137.001 hose
- the restored seed drill donated by Remi Victoor, 2020.07.134.001
- the Canada Post mail wagon donated by Bud Watson, 2017.06.107.002
- the restored manure spreader restored by Vern Zaft, 2020.05.000.014
- the family wagon donated by the Pasemko family, 2021.10.144.001
- a grain wagon donated by the Jespersen family.
- the wood splitter made by Alex Zeigler, 2020.06.132.001
- a restored transplanter, donated by Andrew Miskey, 2020.07.130.001
- Siren brand, seed treater, 2021.10.000.109
- Three Emerson Kickers, dockage testers or seed cleaners (separate grain from weed seeds and wild oats), 2021.07.000.101, 2021.11.000.120, 2021.11.000.125
- a large fanning mill made by Viking used to separate grain from chaff, donor unknown
- a Bulldog Smut remover (separates whole grain from diseased grain), 2021.07.000.100, donor unknown
- a Turnip pulper used to grind turnip and cabbage into cattle feed, 2019.03.118.001, donated by Travis and George Baron.
- a Massey Harris gas engine on wheels 2020.06.016.015, donated by Bob Suder.
- 3 gasoline engines.
- Our collection of hand tools





# East Wall and Ceiling



# North Wall and Fire Wagon





## Fire Wagon



In the early 1900s small towns in rural Alberta recruited Volunteer Firefighters and purchased horse-drawn fire fighting equipment like this. House and barn fires were common.

The tanks on the sides held compressed air. This was put into the water tank to create water pressure.

This wagon belonged first to the community of Holden, then to then Jarvie, and was used for fighting fires for many years.

It was purchased and restored in 1967 by the Spruce Grove Fire Department Volunteers to be used in parades.

It was first used in the Centennial Parade in Rocky Mountain House in 1967.

It was donated to the Spruce Grove and District Agricultural Heritage Society in 2015.

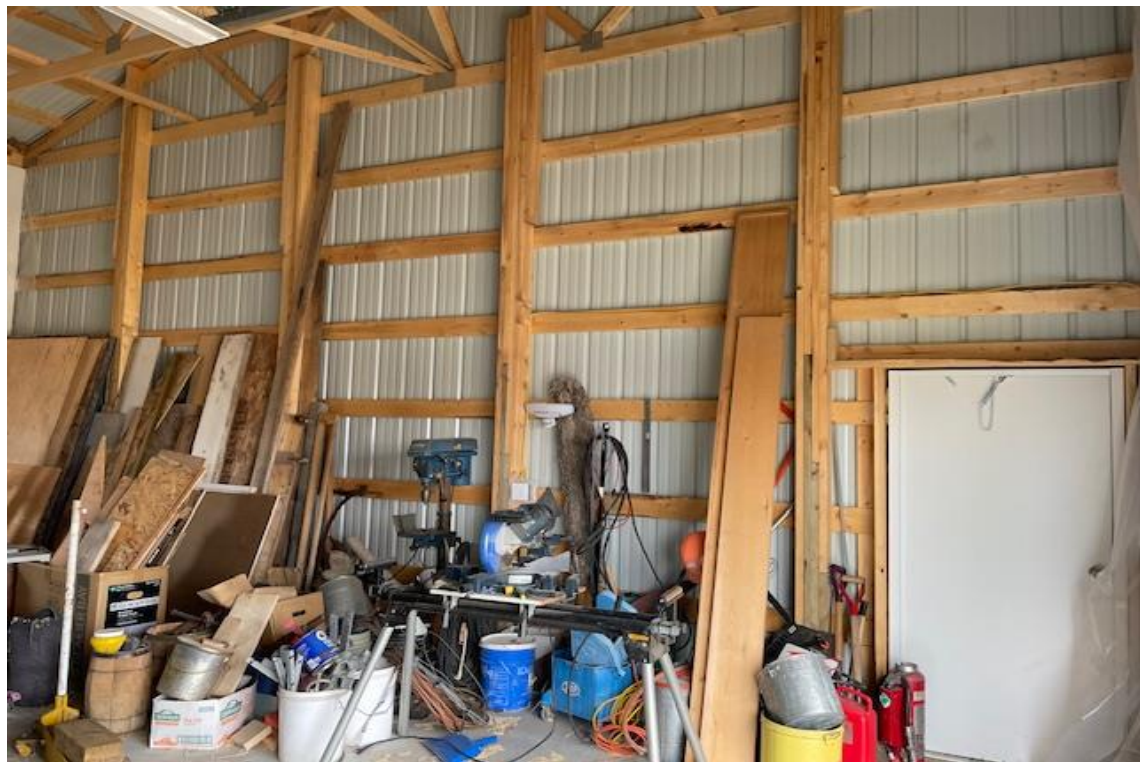
# West (Door) Wall



# Maintenance Shop







## Preliminary Budget – Machinery Row Completion

### Expenses:

#### Display Area:

North Wall (420 sq ft)	Insulation and Drywall (Supply and Install)	\$5,200.00
West Wall (200 sq ft)	Insulation and Drywall (Supply and Install)	\$2,800.00
Lighting and wiring	Fluorescent and spot (Supply and Install)	\$15,000.00
Total:		\$23,000.00

#### Maintenance Shop:

Ceiling (900 sq ft)	Insulation and Drywall (Supply and Install)	\$9,400.00
South Wall (420 sq ft)	Insulation and Drywall (Supply and Install)	\$5,200.00
Paint and Supplies		\$400.00
Total:		\$15,000.00

#### Display Mural:

East wall visual display	Total:	\$15,000.00
--------------------------	--------	-------------

#### Labelling:

All display machinery	Sign Printing	\$2,100.00
	Barcode License	\$180.00
	Display Stands	\$2,550.00
	QR Coding	\$1,200.00
Total:		\$6,030.00