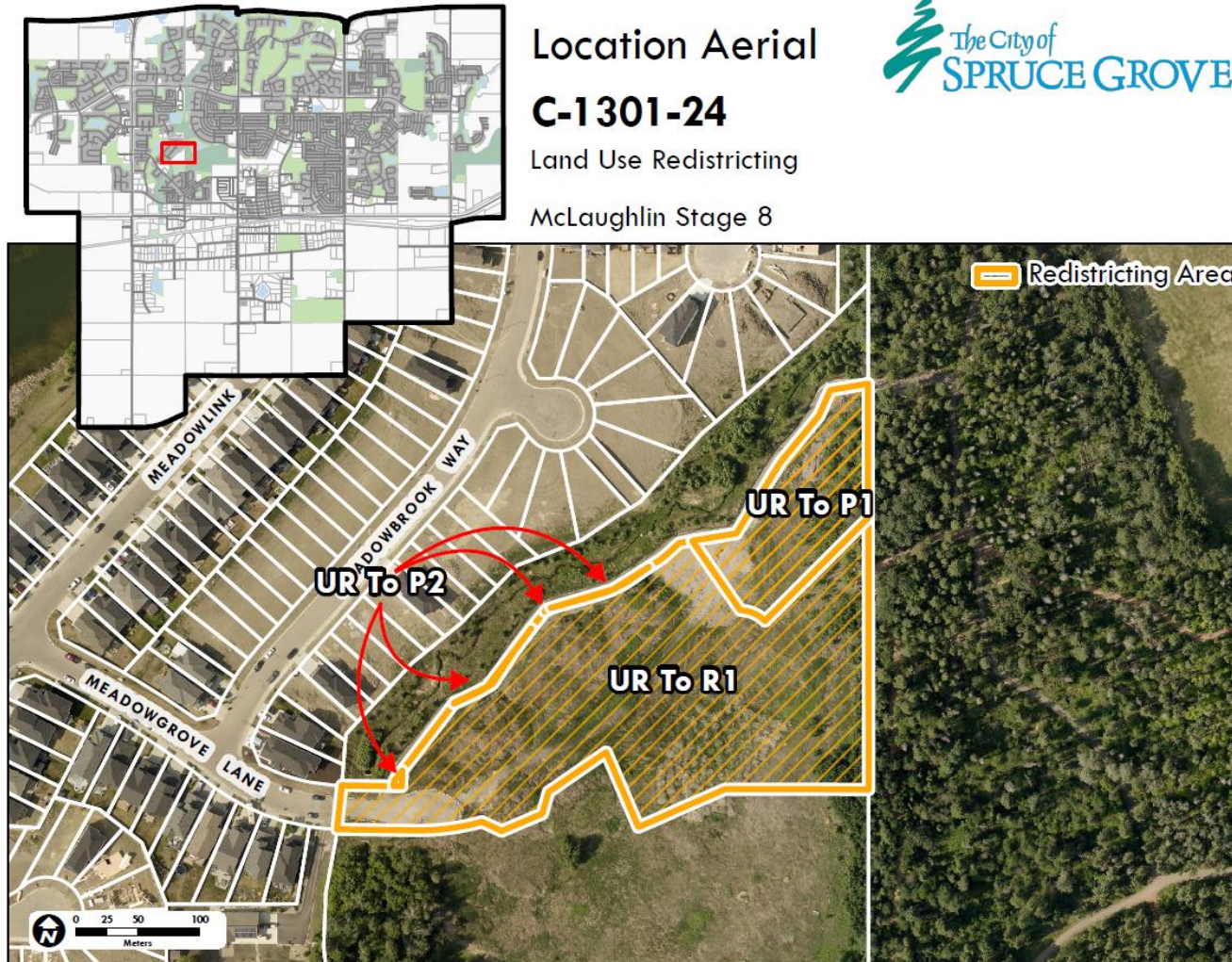


Bylaw C-1301-24
Land Use Bylaw Amendment
McLaughlin Stage 8

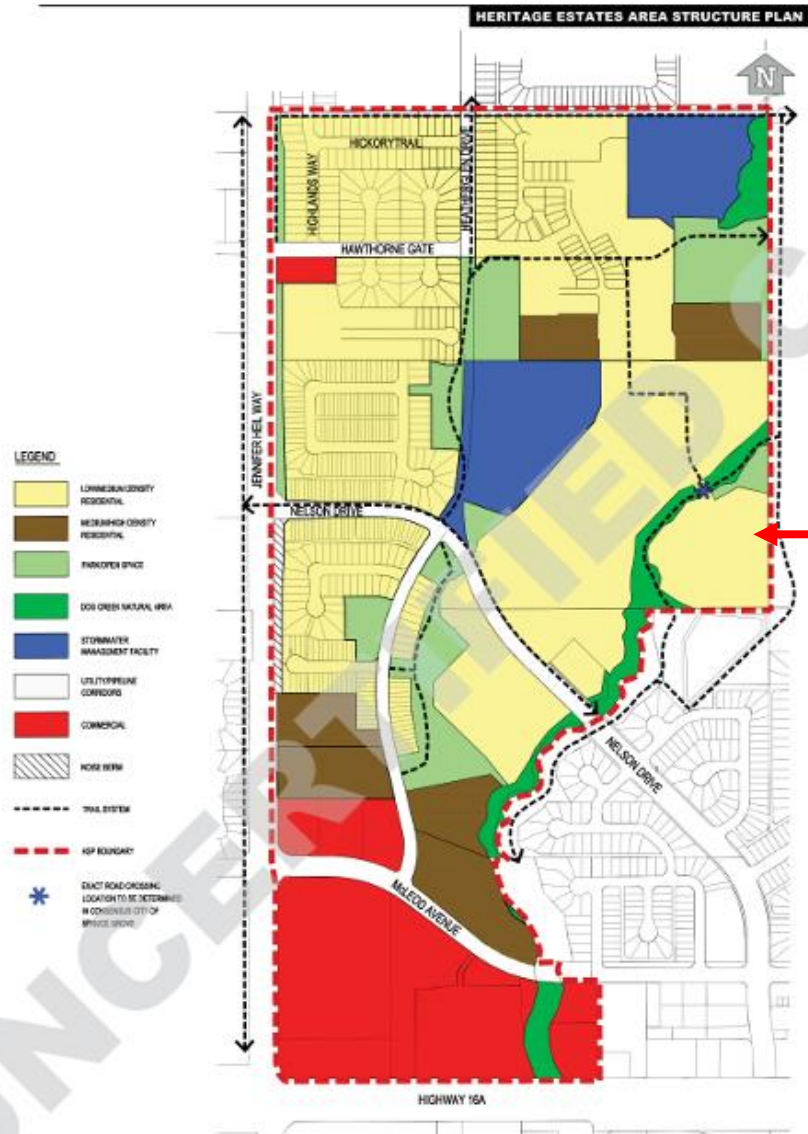
City of Spruce Grove
Third Reading
Bylaw C-1301-24
July 8, 2024

Location



- **McLaughlin Stage 8**
- Intended Land Use:
 - Residential
 - Park/Open Space
 - Natural Area

Heritage Estates Area Structure Plan




- **McLaughlin Stage 8**
 - Intended Land Use:
 - Residential
 - Park / Open Space
 - Dog Creek Natural Area

Heritage Estates Area Structure Plan



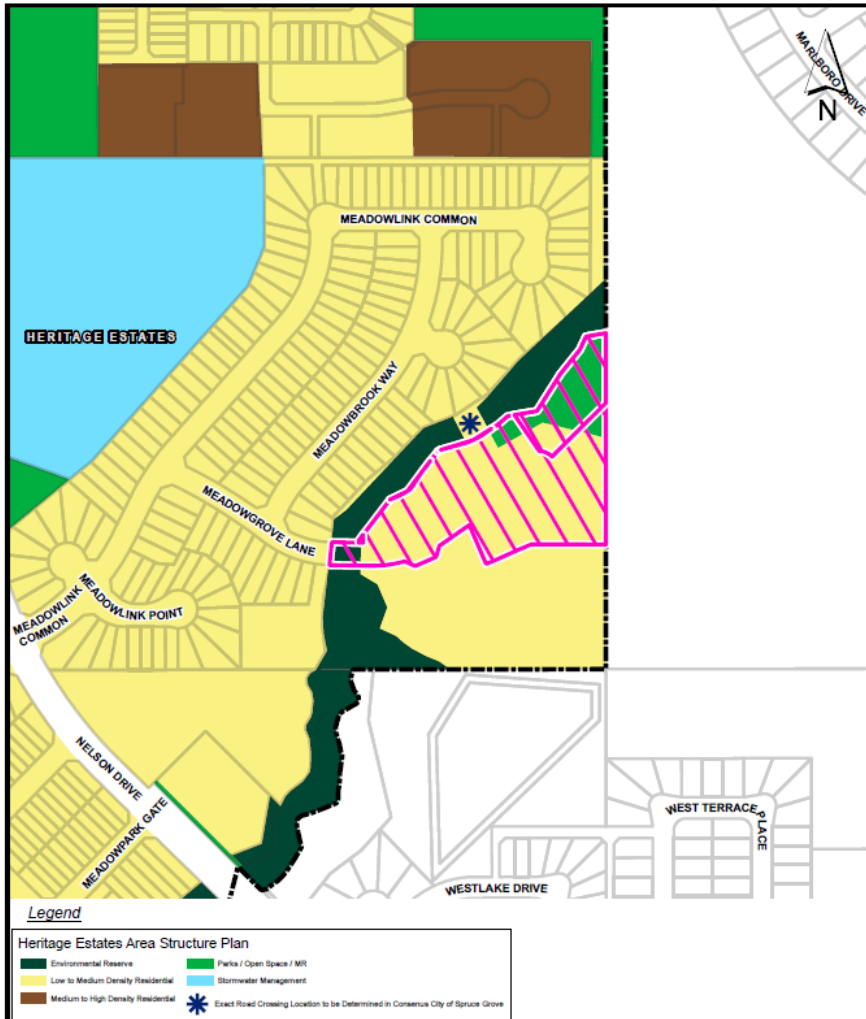
ASP Overview

Site of Proposed Redistricting C-1301-24

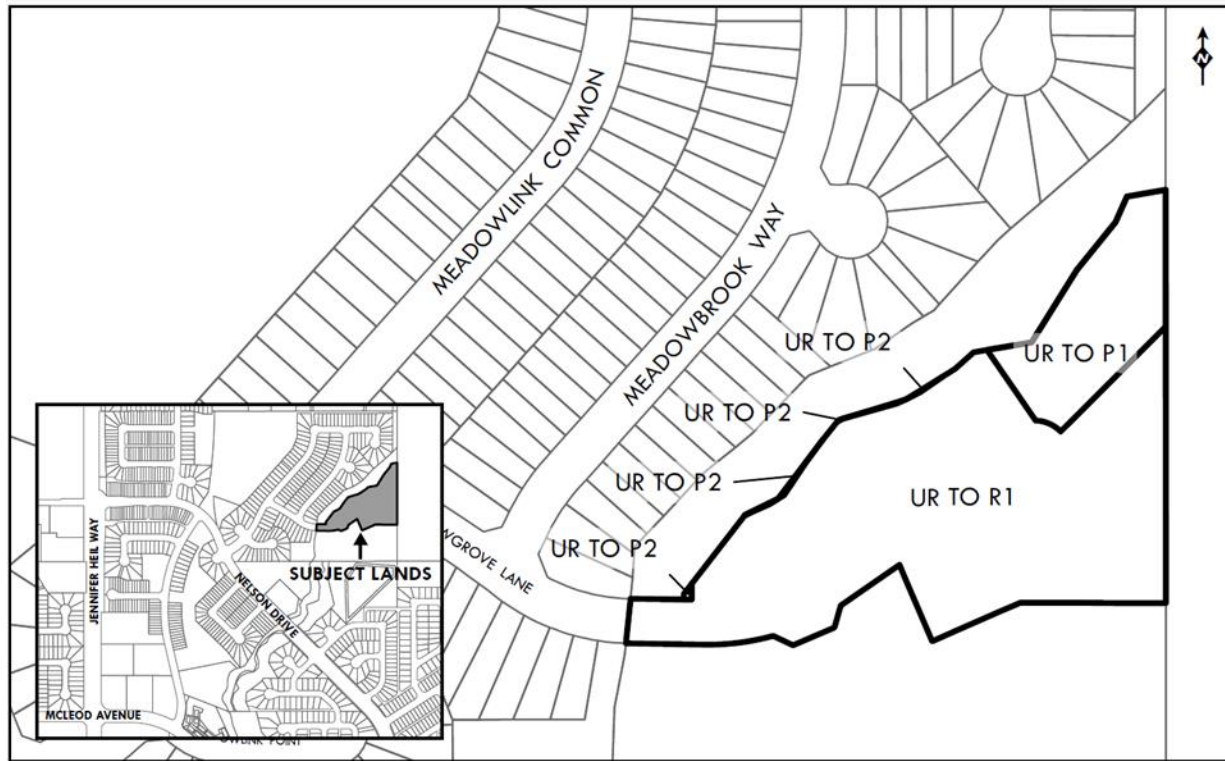
McLaughlin Stage 8 

➤ Land Use Concept

- Mixed Low to Medium Density Residential
- Park / Open Space
- Dog Creek Natural Area



Proposed Amendment



Legal Description:

Part of NW ¼ Section 4; Township 53; Range 27; W4M

Amendment Area: 1.86 ha

Proposed amendment

From: UR - Urban Reserve

To: R1 - Mixed Low to Medium Density Residential District

P1- Parks and Recreation District

P2 - Natural Areas District

Questions and Comments