

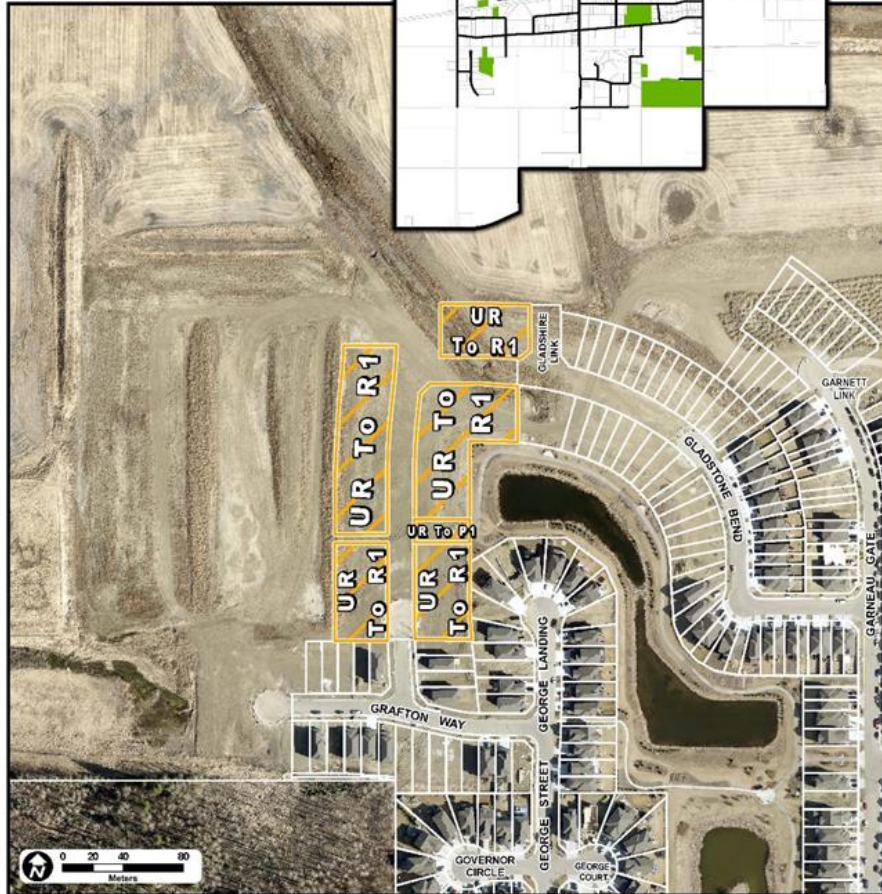
Bylaw C-1211-22 Land Use Bylaw Amendment **Greenbury Stage 13**

Third Reading
Bylaw C-1211-22
July 8, 2024

Location



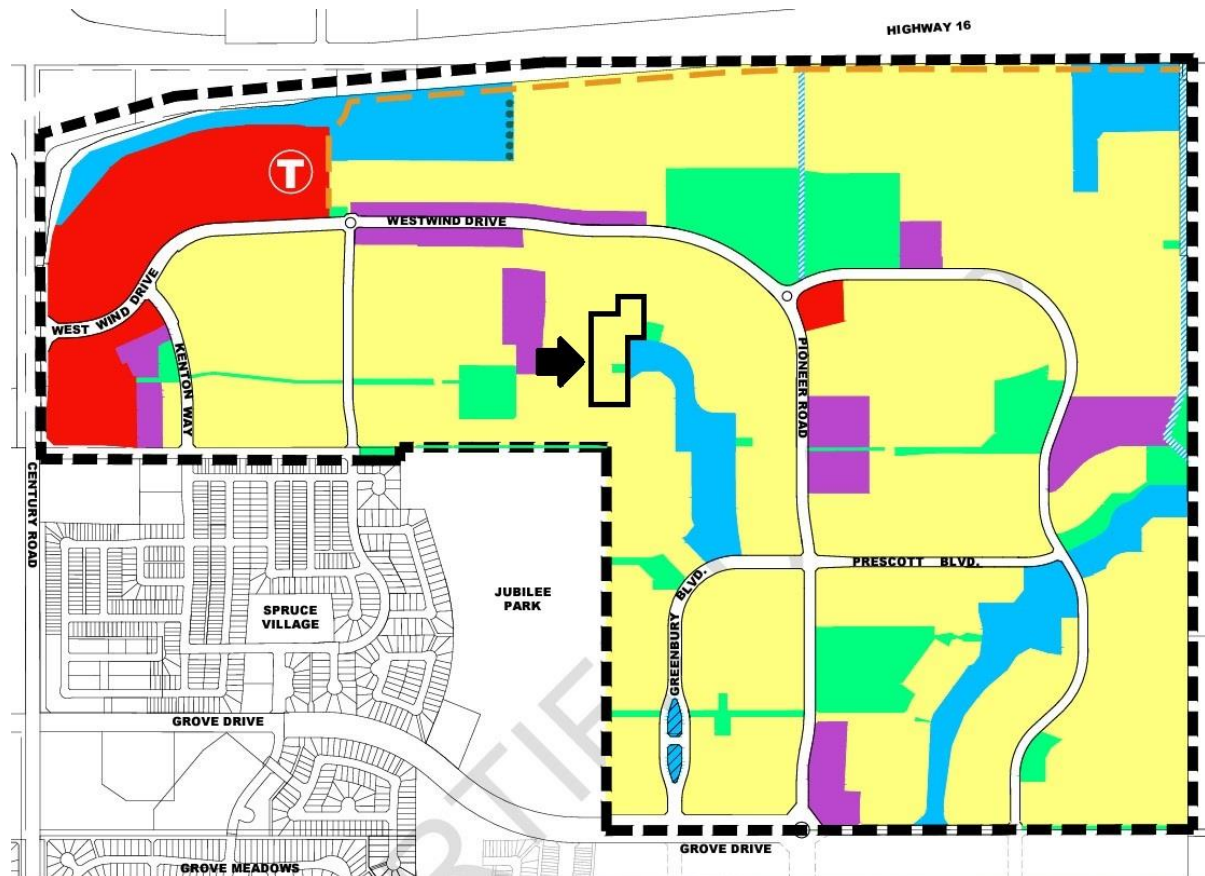
Location Aerial
C-1211-22
Proposed Redistricting
Greenbury 13



Greenbury Stage 13

- Intended Land Use:
 - Residential
 - Park and Open Space

Pioneer Area Structure Plan

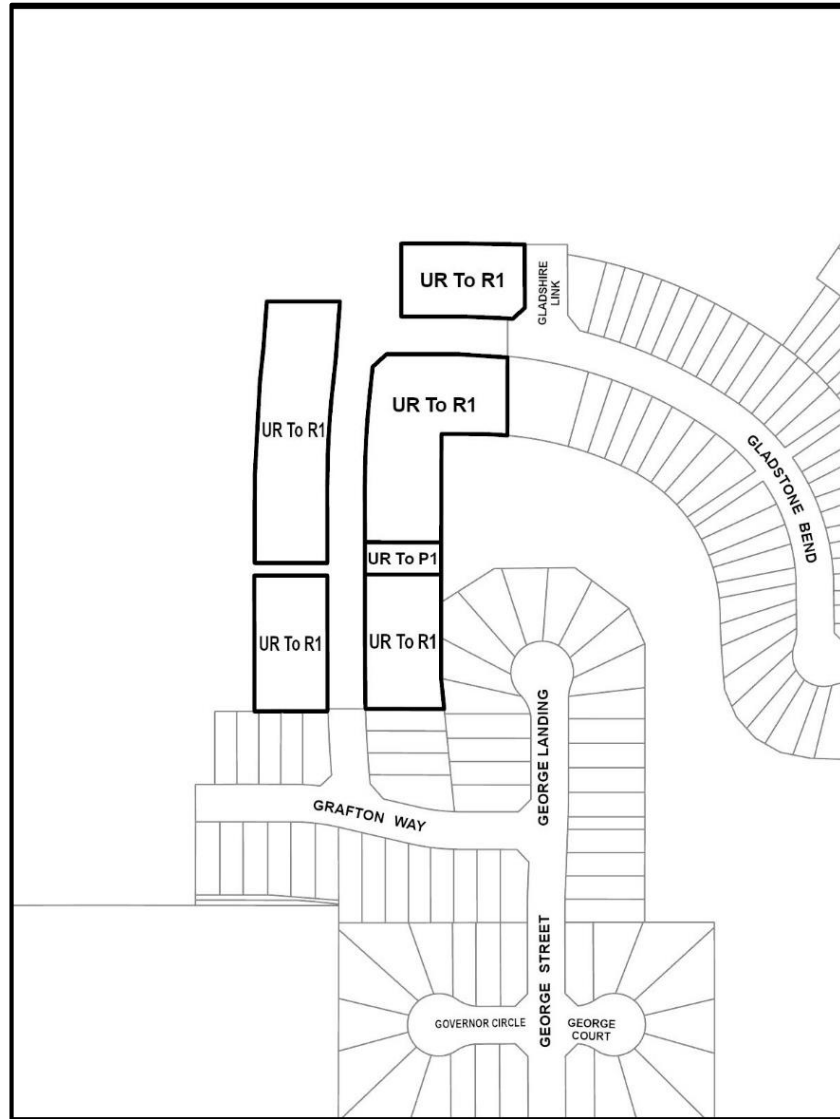


LEGEND

Commercial	Park/Open Space	ASP Boundary
Medium to High Density Residential	Berm	Transit Station
Low to Medium Density Residential	Median PUL	Storm Management Facility
Storm Management Facility	Public Utility Lot (PUL)	Street Frontage

- **Land Use Concept**
 - Mixed Low to Medium Density Residential
 - Park / Open Space

Proposed Amendment



Legal Description:

Lot 2, Block A, Plan 132 4055

Amendment Area: 2.20 ha

Proposed amendment

From: UR - Urban Reserve

To: R1 - Mixed Low to Medium
Density Residential District;
and

P1 - Parks and Recreation
District

Questions and Comments