

City of Spruce Grove

2024 Capital Projects - Engineering Update

2024 Capital Projects



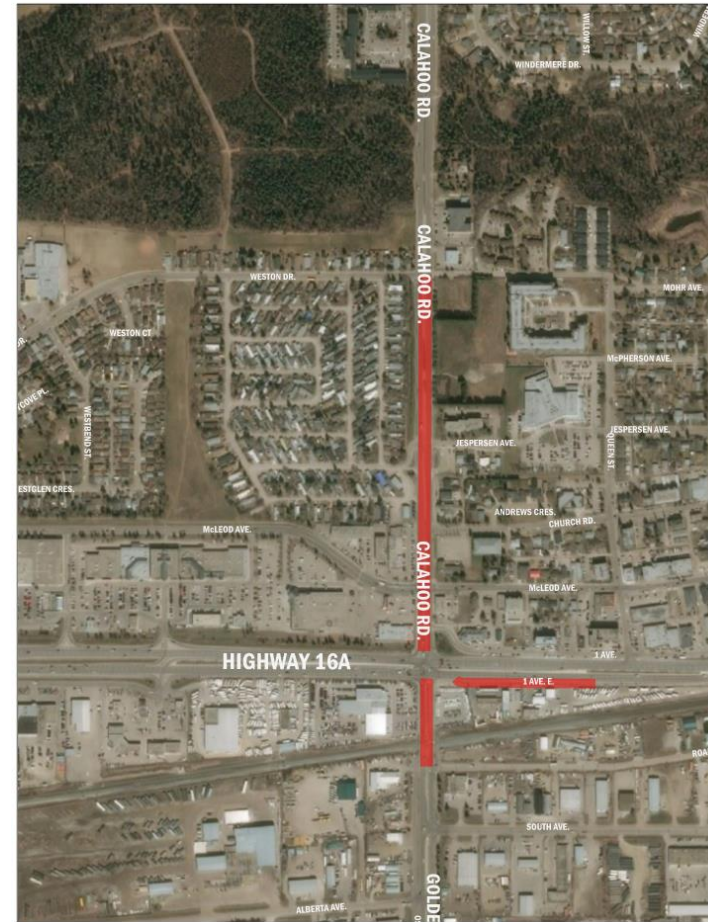
City Centre Water Main and Sanitary Sewer Rehab - Mohr Avenue

- Upgrade the water main and sanitary within Mohr Avenue from Calahoo Road to Queen Street.
 - To accommodate Meridian Housing



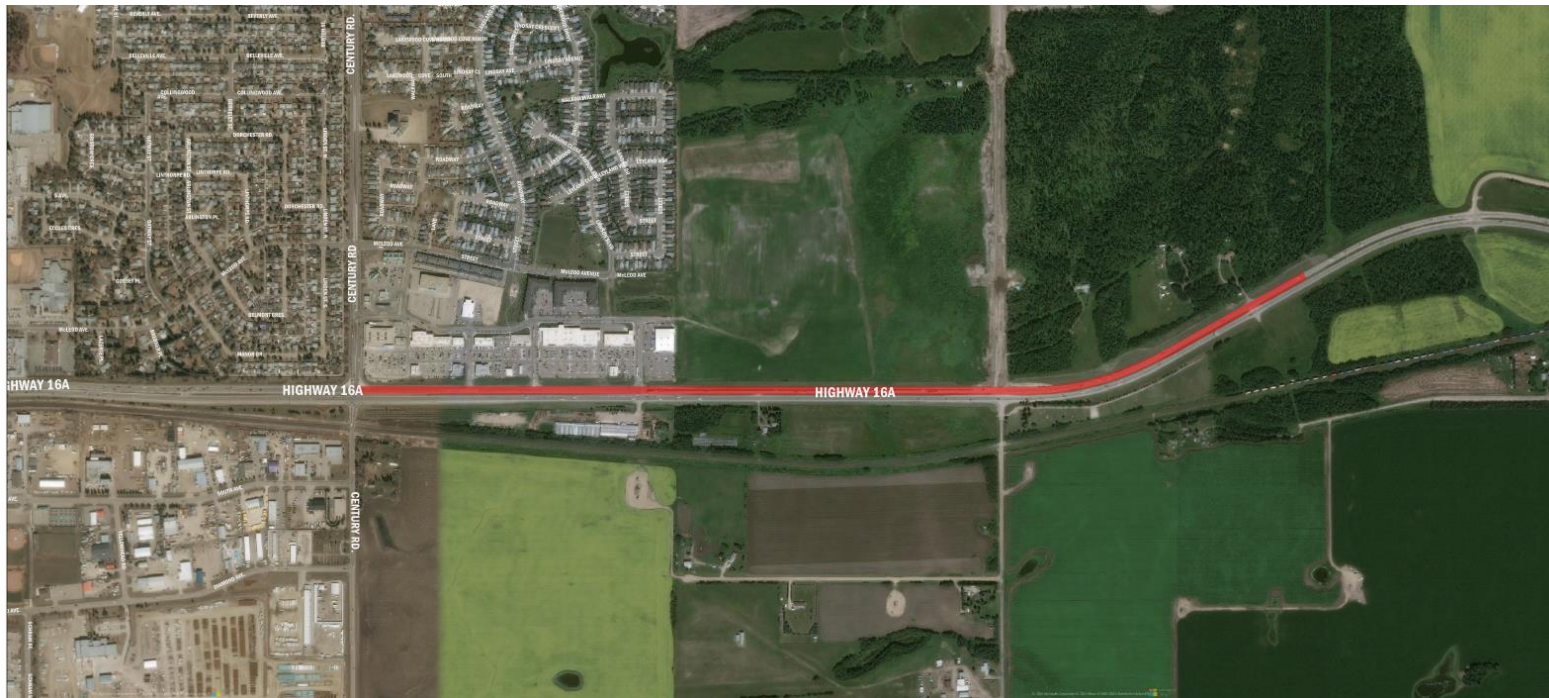
City Centre Surface Infrastructure Improvements - Calahoo Road

- Curb, gutter, and sidewalk repairs.
- Mill and overlay of the roadway.



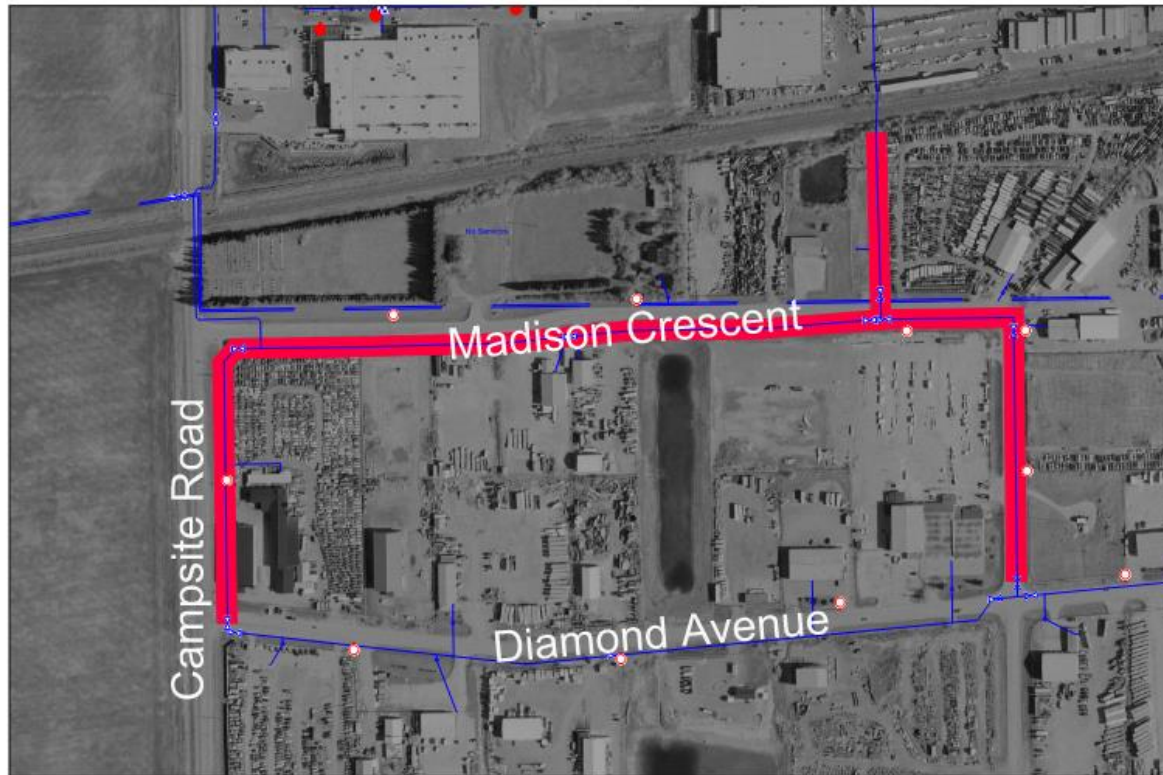
Arterial and Hwy 16A Resurfacing - Hwy 16A WB lanes

- Mill and pave of the west bound lanes for Highway 16A from City Limits to Century Road.
 - Expected to be night work



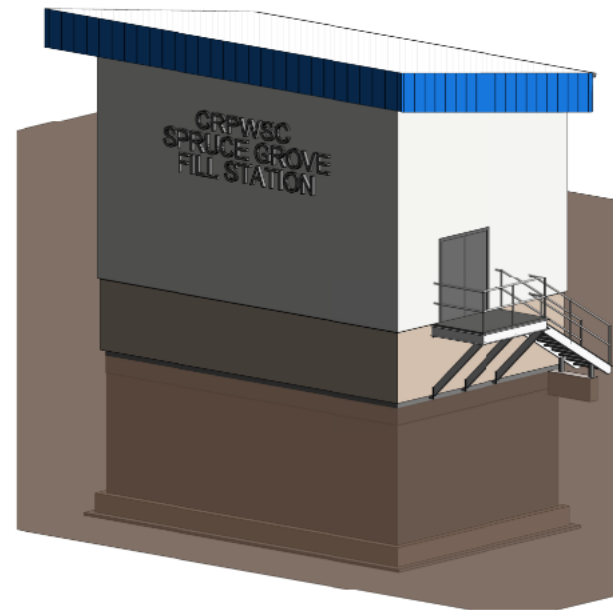
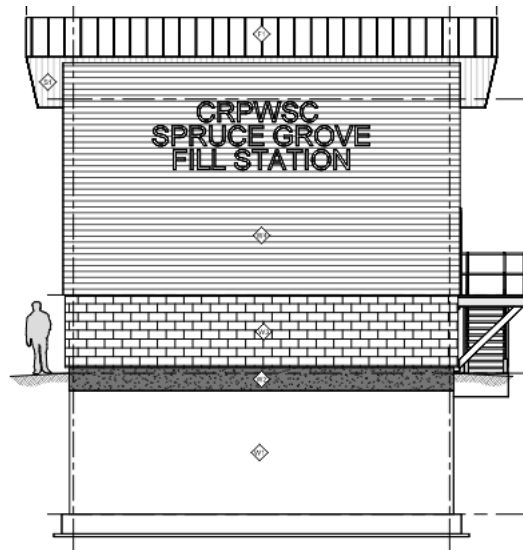
Industrial Water Main - Madison Crescent Crescent

- Replacing the water main within Madison Crescent.
- Any required sanitary repairs / upgrades will also be completed.



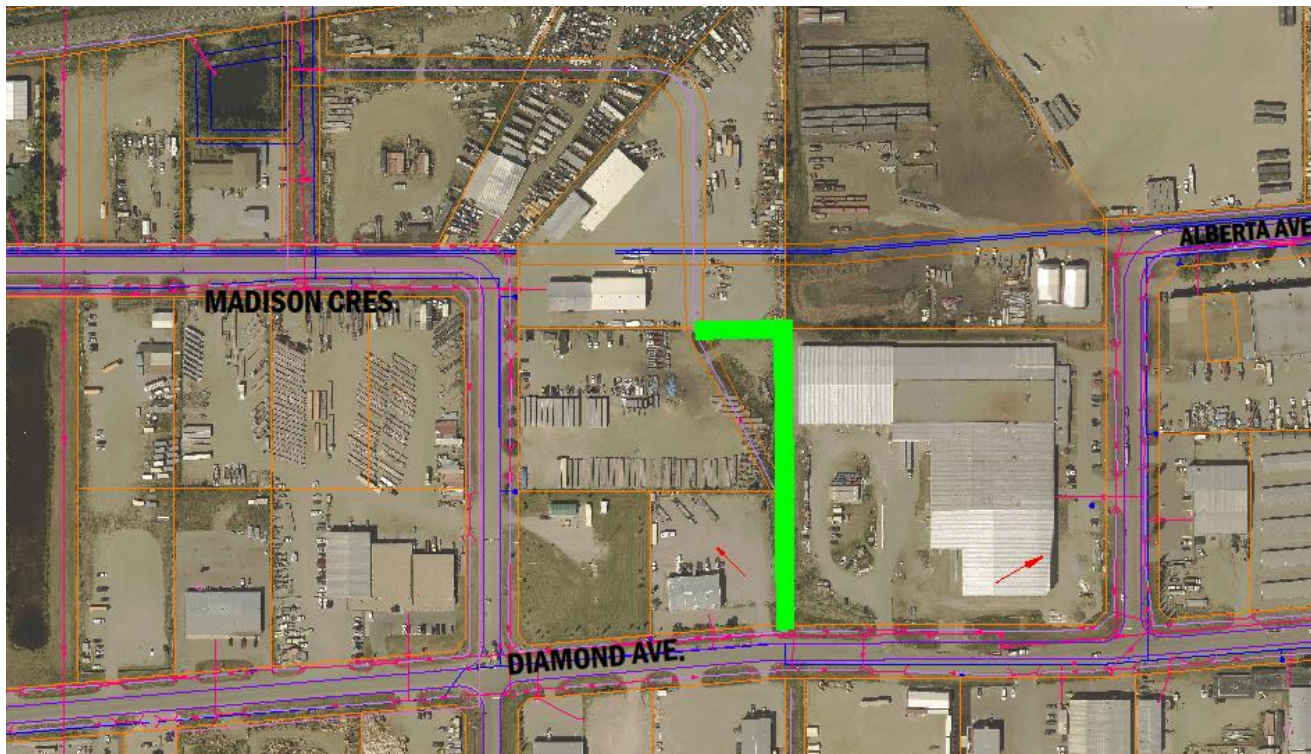
Reservoir Fill Point Connection

- Construction of a new building for the water connection between the Commission and the City's reservoirs located by Henry Singer Park.
- Joint project with the Commission's water main construction.



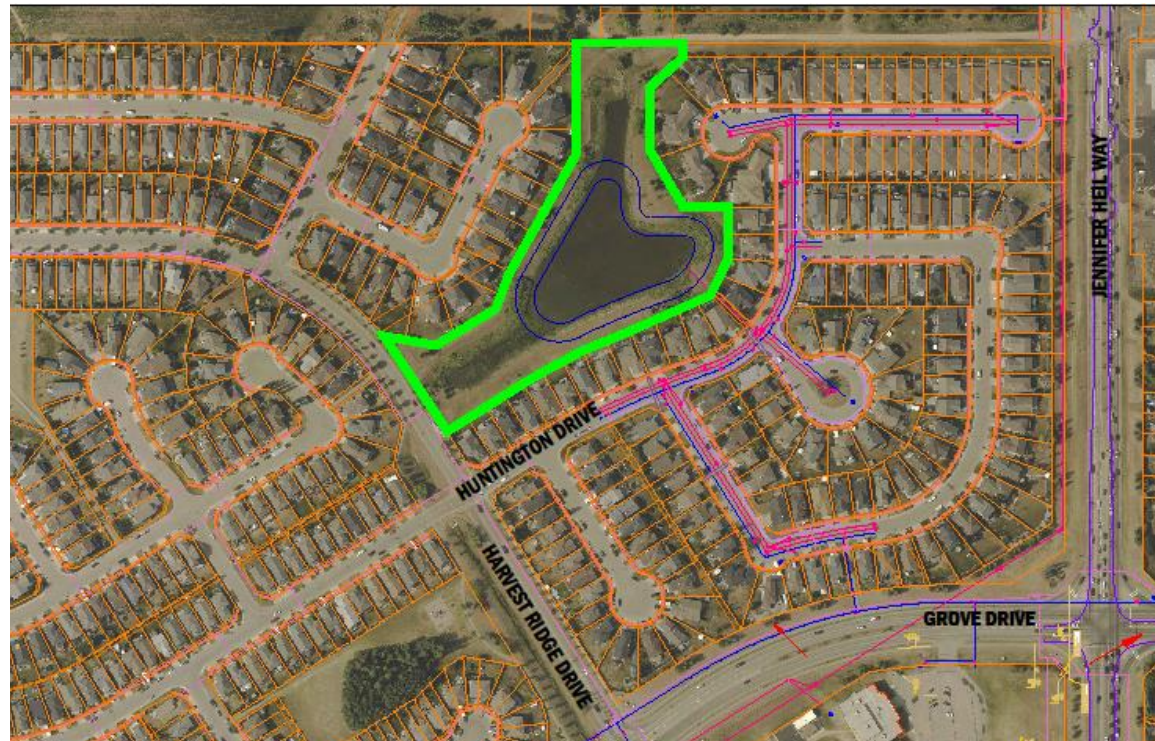
Storm Drainage Improvements - Diamond Avenue Area

- Upgrade the drainage in this area.
- Fix the alignment to allow better use of industrial lands.



Stormwater Management Facility Rehab - Harvest Ridge SWMF

- Increase the Storage Volume of the storm water management facility.
- Improve the outlet structure and address resident concerns.
- June start date.



Re-Imagined Central Park

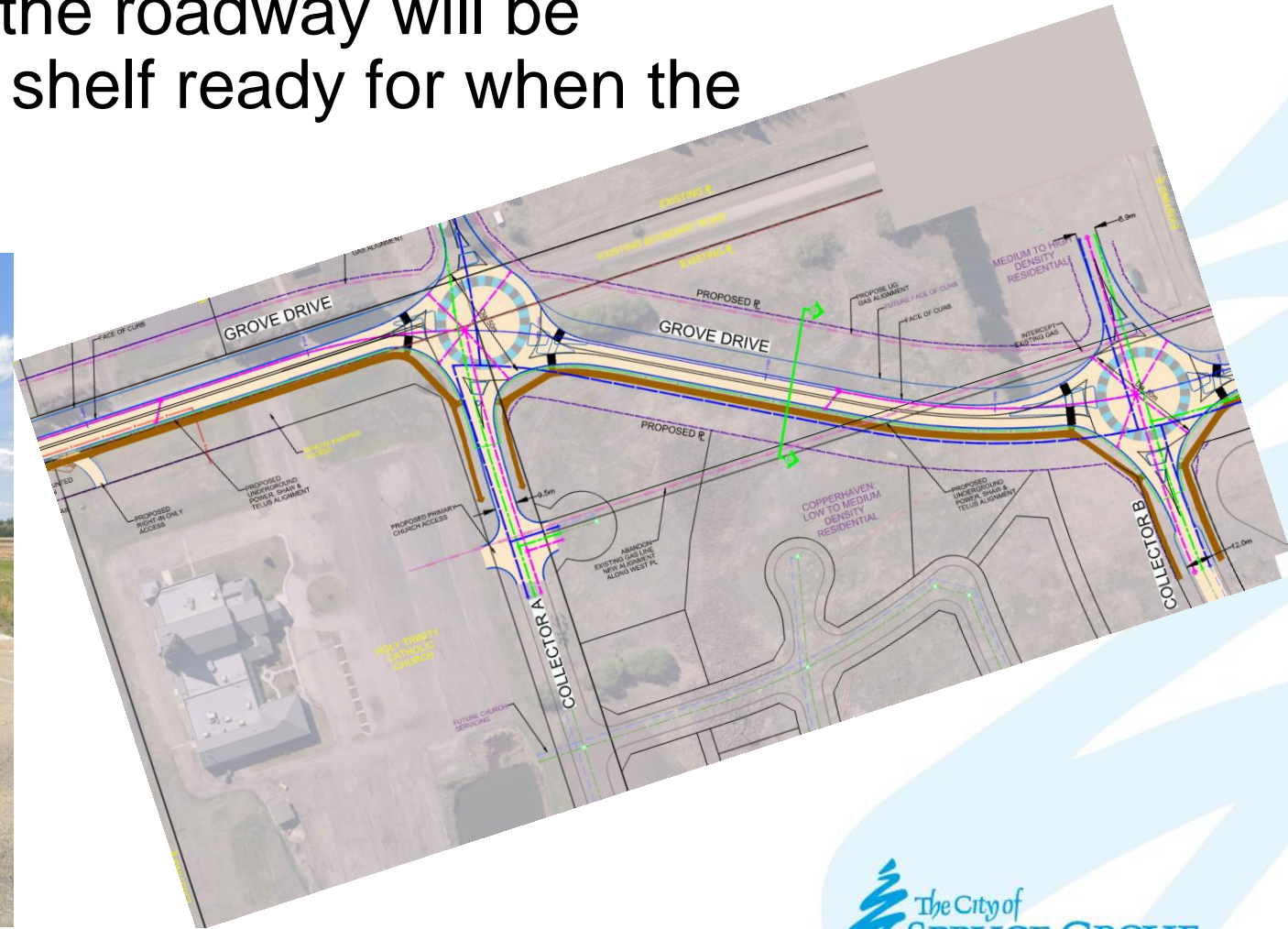
Concept

Current

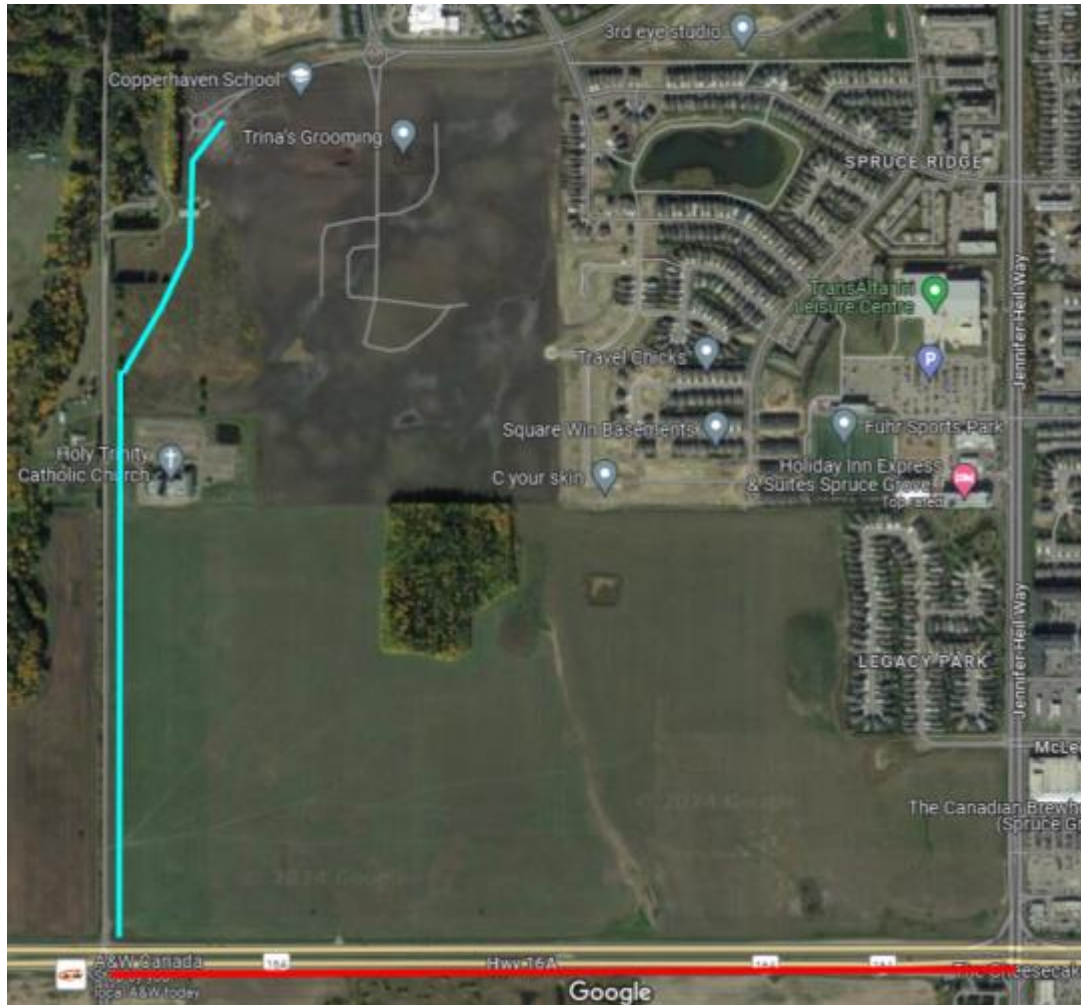


Boundary Road Design and Tender

- The Design and Tender for the roadway will be completed this year and be shelf ready for when the construction can begin.



Spruce Grove and Stony Plain Trail



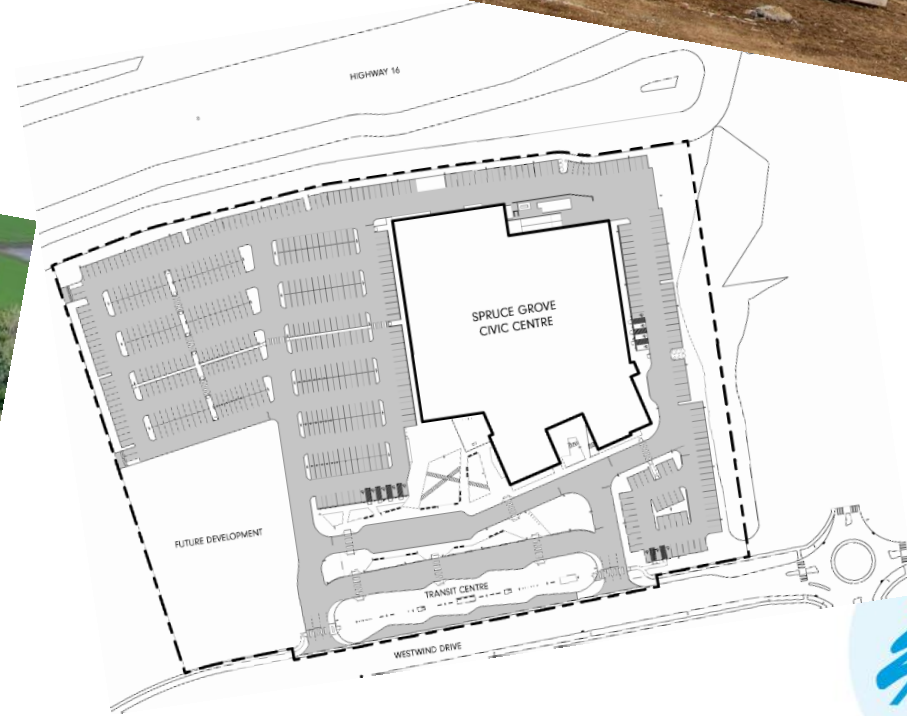
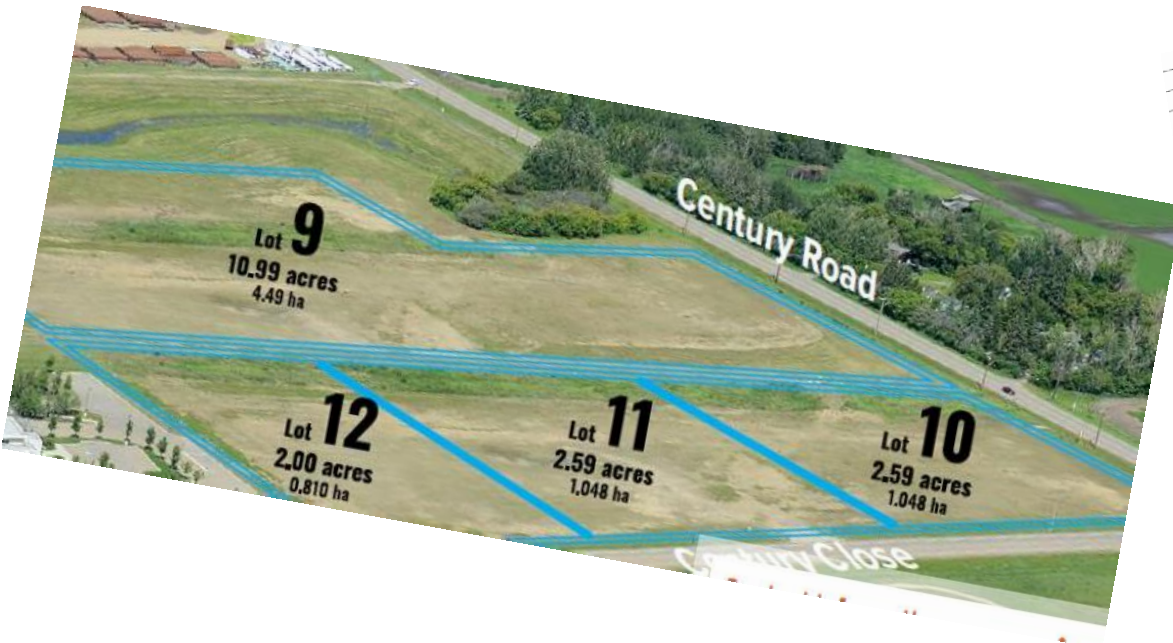
- Spruce Grove finished their portion of this joint project in 2022. (blue line)
- Stony Plain started their portion of the path in 2023 and is expected to complete it this year. (red line)

Other Miscellaneous Engineering Projects

- Traffic Signal Upgrades - various locations.
- Storm Catch Basin Upgrades - various locations.
- Transit Concrete Bus Pads - various locations.
- Pedestrian Bridges - Condition Assessment and Load Rating Classification.
- Traffic Signals Efficiency Study.
- Road Network Pavement Condition Assessment.

Other Projects

- Civic Centre
- City owned South Century Industrial Subdivision



Thank You

Questions?