

City of Spruce Grove Integrated Transportation Master Plan

Committee Presentation – January 15, 2024

Ryan Betker, Jarrett Zilinski

Today's Agenda

- Project Update
- What We Heard
- Current Conditions (Traffic Analysis)
- ITMP Direction
- Next Steps

Project Update



SUMMER 2023 –
FALL 2023

PHASE 1 – WHERE ARE WE NOW?

Understanding current issues, needs and opportunities in Spruce Grove.

Key Dates.

Oct 2023 – Public Engagement Launch and Council Presentation #1



FALL 2023 – WINTER
2023/2024

PHASE 2 – WHERE DO WE WANT GO?

Creating common vision on how the City will evolve with growth and where we want to be.

Fall/Winter 2023/24 – Preliminary ITMP Direction, Modelling & Network Assessment, Preliminary Priorities

WE ARE
HERE



WINTER 2024 –
SPRING 2024

PHASE 3 – HOW DO WE GET THERE?

Aligning related programs to help growth initiatives, efforts and strategic investments with the ITMP.

Spring 2024 – Council Presentation, Public Information Sharing, Final ITMP Presentation

ITMP Engagement

Round 1

- Public Engagement - Online Interactive Map, Vertisee
- Council Presentation - ITMP Introduction

Round 2

- Public Engagement - What We Heard Report
- Council - ITMP Direction Check-In



Round 3

- Public Engagement - Presenting the ITMP
- Internal Stakeholders - Presenting the ITMP

integrated
**TRANSPORTATION
MASTER PLAN**

Get Involved!

sprucegrove.org/TransportationPlan

The City of
SPRUCE
GROVE

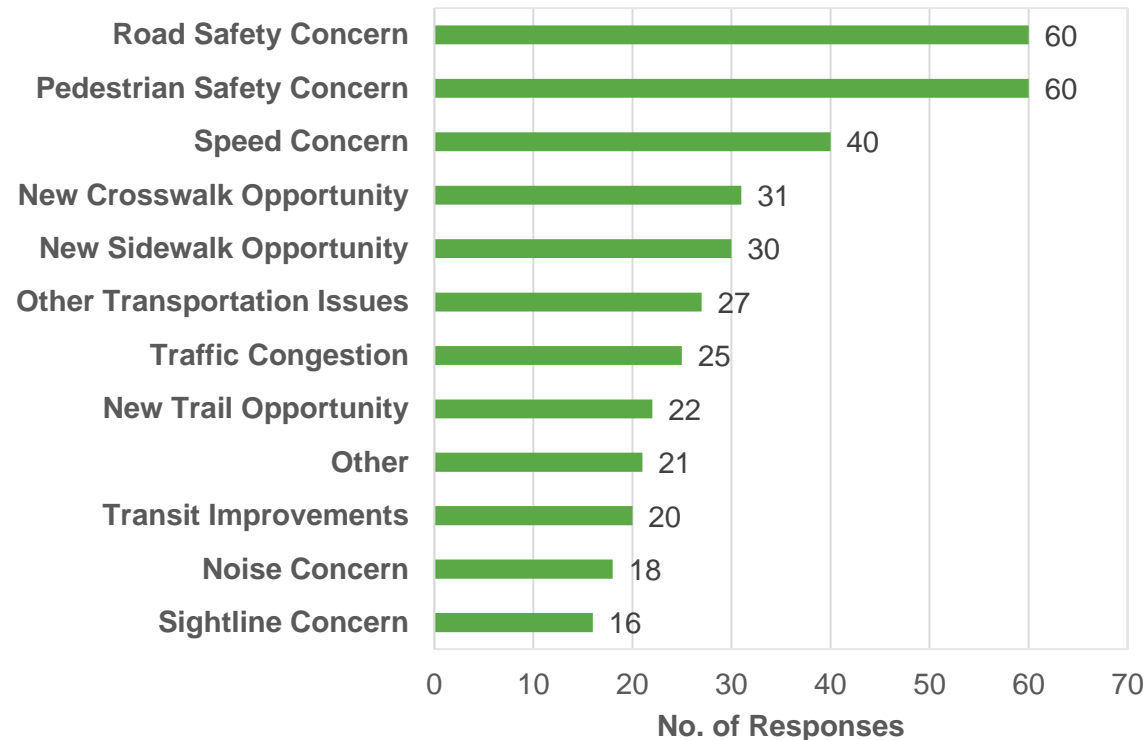
The graphic features a dark blue background with white and yellow text. At the bottom, there are stylized icons for a yellow car, a yellow bicycle, an orange bus, and a pink person walking. The City of Spruce Grove logo is in the bottom left corner.

What We Heard Highlights

434 Responses

General: 424 Youth: 10

- Approximately 150 Unique Respondents
- Significant Agree/Disagree to comments
- Surge of comments from October 25-31

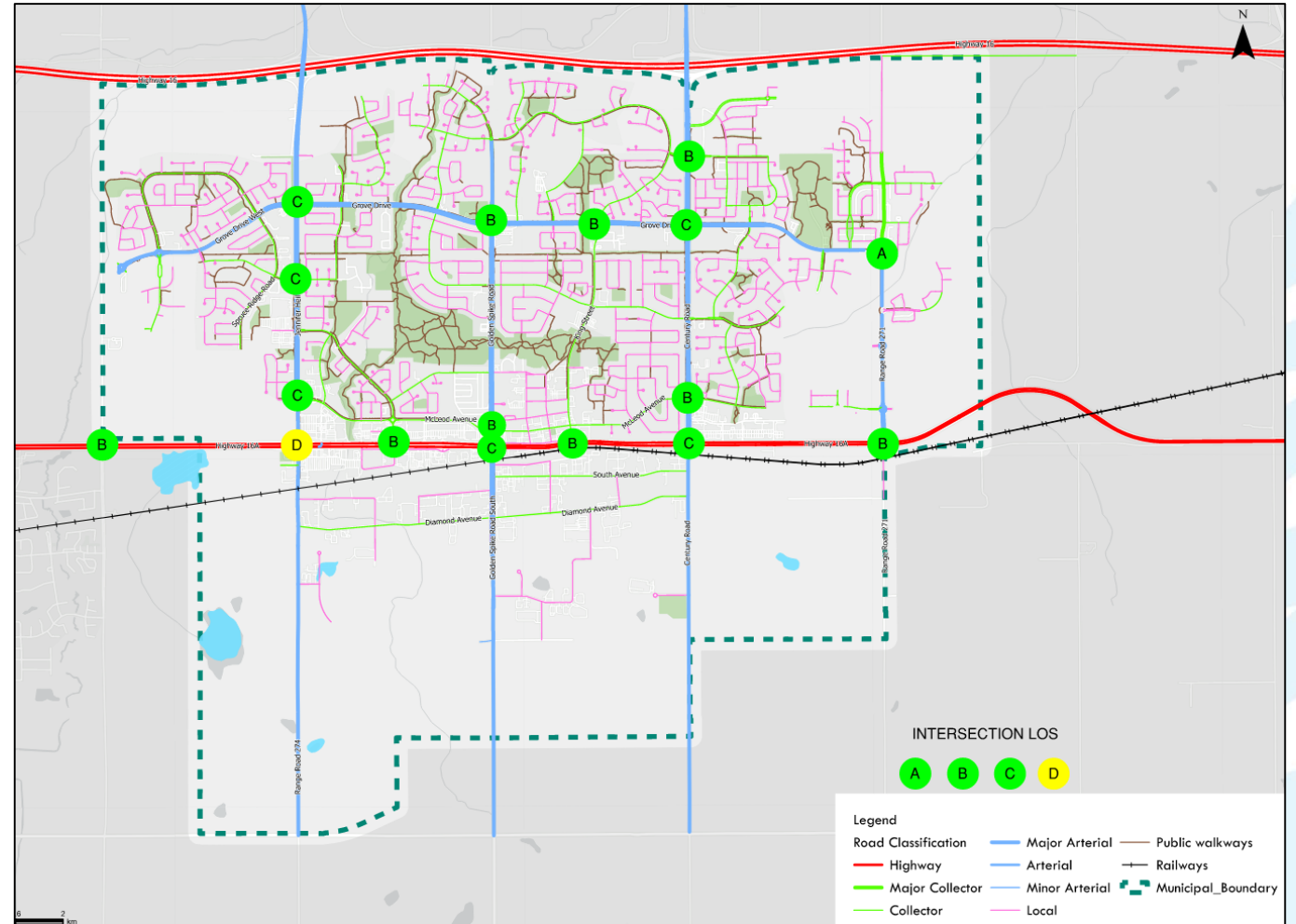


Highlights:

- Active Transportation
 - Better protection for pedestrians
 - Improved trail connectivity
- Speed and Safety
 - Corridor speeding in neighbourhoods
 - Intersection safety (various locations)
- Intersection Operations
 - Signal timing and turn bays

Existing Road Network

- Well-connected road network that provides efficient traffic flows.
- Overall, key intersections currently operating under acceptable levels of service during the PM peak hour.
- Area of constraints and opportunities:
 - Higher delays observed at Highway 16A and Jennifer Heil Way.
 - Four at-grade rail crossings south of Highway 16A.
 - Future Boundary Road connection.
 - Operational and safety improvements.



ITMP Direction - The Pillars

ITMP

Transportation Safety

- Intersection Operations and Safety
- Pedestrian Safety
- Traffic Calming

Transportation Connectivity

- Active Modes Connection (missing links)
- Protection for Future Connectivity (all modes)
- Accessible to all

Transportation Supporting Growth

- Goods Movements
- Environmental and Social Awareness
- Access to New Economic Development
- Investing in Asset Management

Regional Integration

- Intermunicipal Transit
- Advocacy and Regional Partnerships

Technical Analysis & Stakeholder Engagement

Transportation Safety



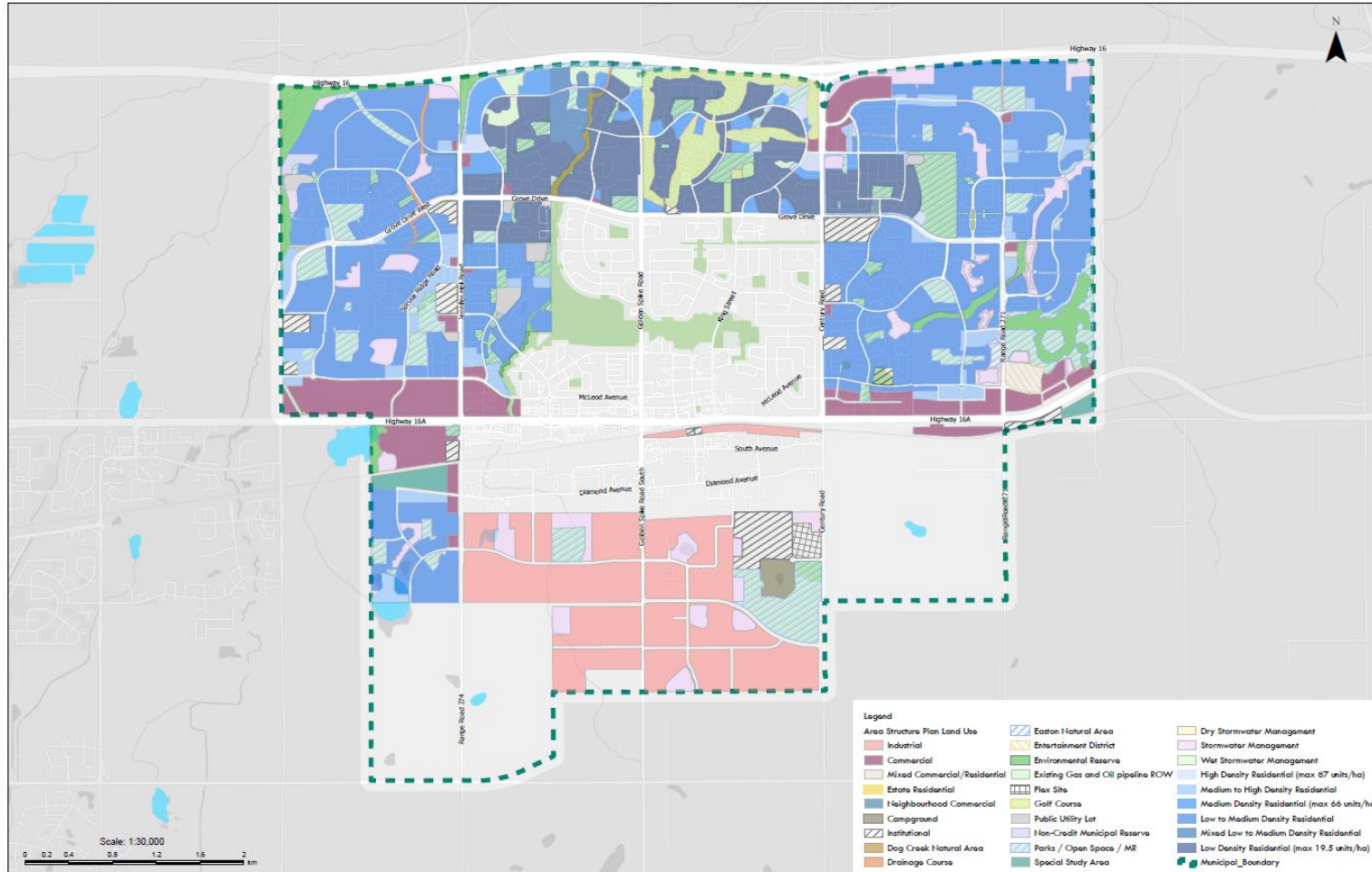
- Crosswalk safety across City
- Special care around schools for vehicle and pedestrian traffic
- Traffic calming along key neighbourhood collectors
- Safe operations of key corridors and intersections:
 - Grove Drive
 - Highway 16A
 - Jennifer Heil
 - Golden Spike Road
 - King Street

Transportation Connectivity

- Protect for effective future roadway connections.
- The roadway transportation system is supported by a large network of trails and sidewalks, providing residents connections to key destinations such as recreational areas and schools.
- **Continued investments in active modes through:**
 - Incorporating active modes in future new roads and/or reconstruction projects.
 - Providing missing connections to neighbouring communities and other recreational areas.
 - Ensuring all users can access the network (all ages, abilities, etc.).



Transportation Supporting Growth



BY 2045

30,000
MORE PEOPLE

> 5,000
MORE JOBS

Regional Integration

- Continued improvement of transit connectivity to neighbouring municipalities (Parkland County, Stony Plain, Edmonton)
- Advocacy to maintain safe operations of Highway 16 (including off-ramps)
- Safe integration of rail throughout the City



Next Steps

- Modelling and Scenario Testing
- Network Assessment and Future Operations
- Draft ITMP Report
- Council Presentation
- Final Report
- Report Release and Communications

Any Questions?

Thank you!