

Public Hearing and Request for Decision

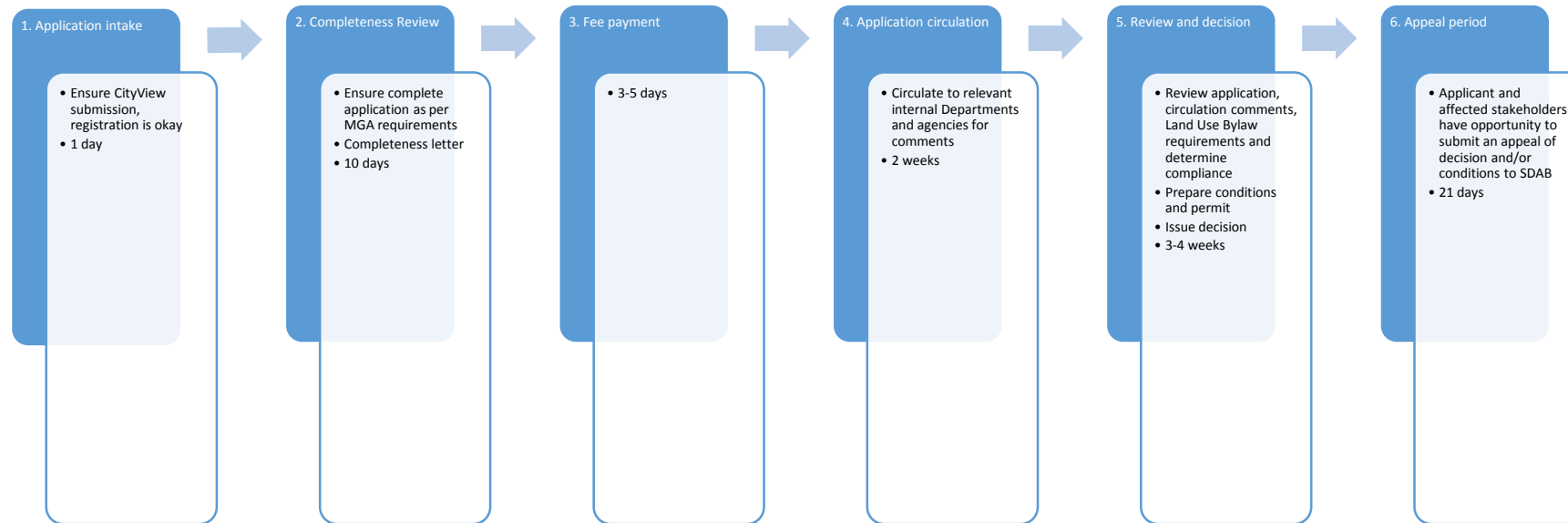
Development Permit Application PLDPNR202300489 - Direct Control District - Child Care Facility with an outdoor play area - Suite 1 - 420 King Street (former Examiner location)

Introduction and Purpose

- Municipal Address: 420 King Street
- Land Use District: DC - Direct Control
- Development Permit Application PLDPNR202300489
- To consider the approval of the development permit application for a Child Care Facility with an associated outdoor play area



Figure1 – Development Permit Process



Step 5: Review and Decision

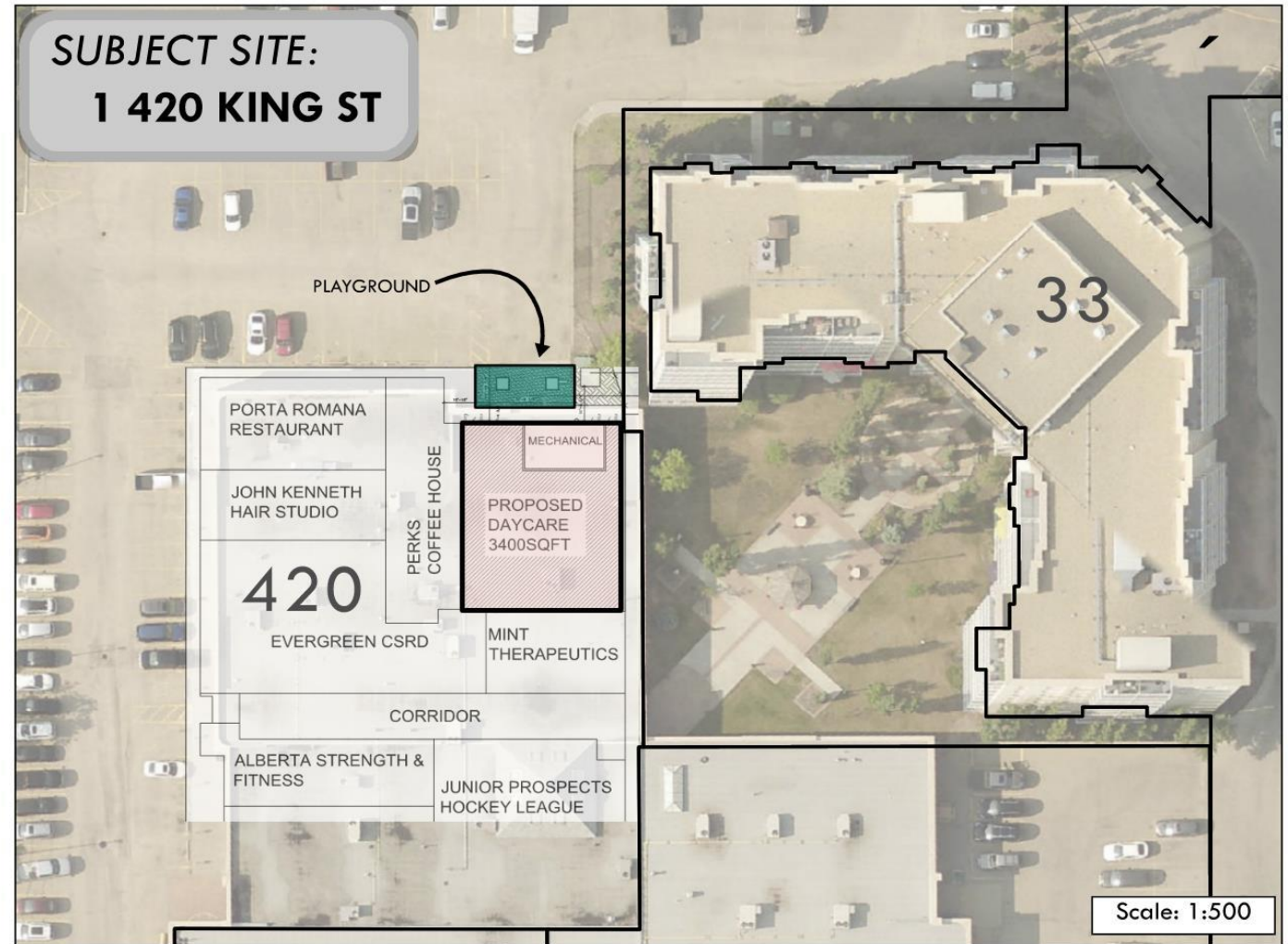
Application Summary

- Location of proposed Child Care Facility
- Land Uses surrounding the site
- Land Use District - DC - Direct Control



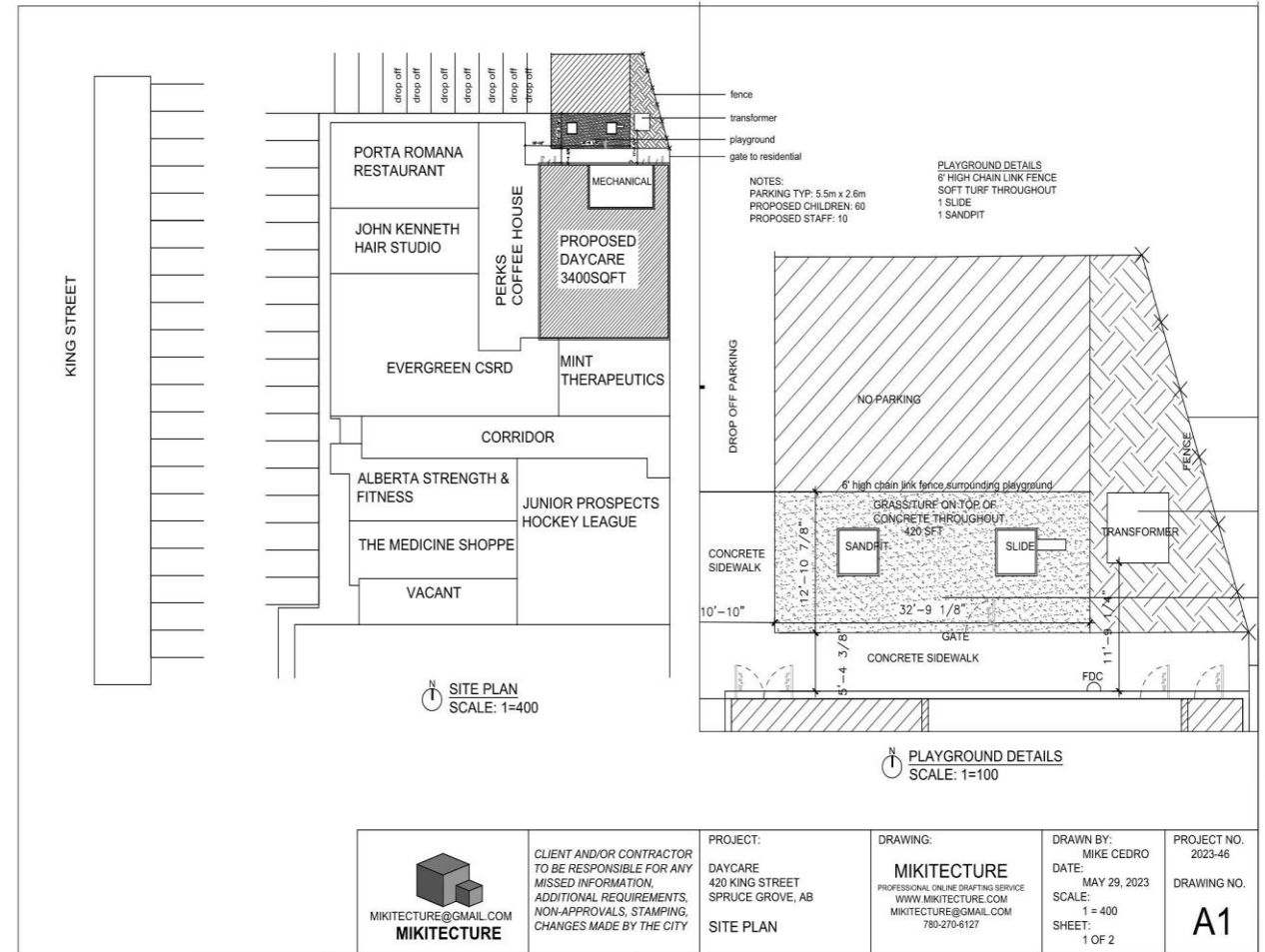
Land Use District

- Lands zoned from C-5 - Commercial - Shopping Centre to DC - Direct Control
- Purpose of the rezoning
- Uses approved by Council



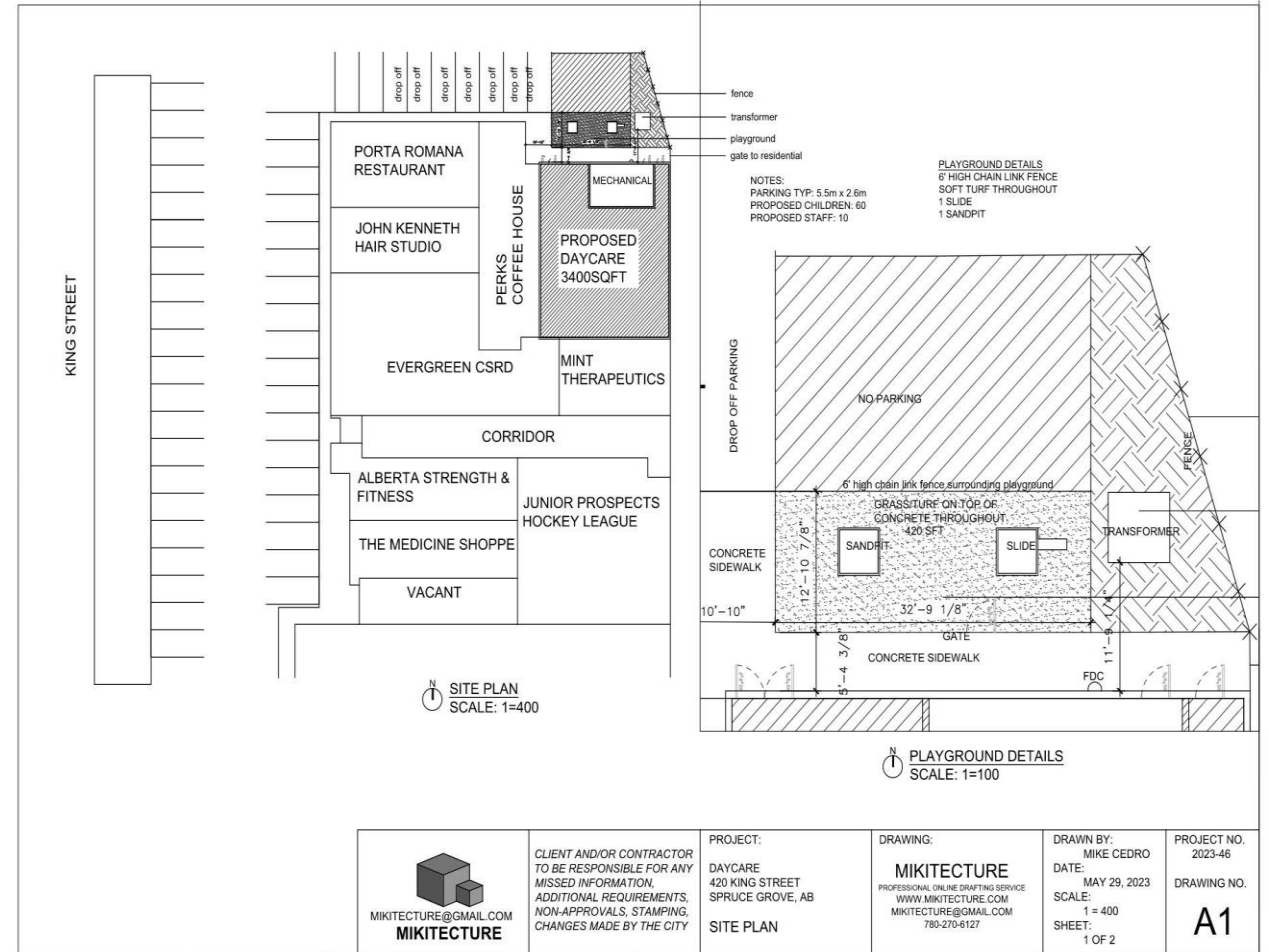
Use and Regulations

- Child Care Facility defined as per the Land Use Bylaw
- Child Care Facility Regulations



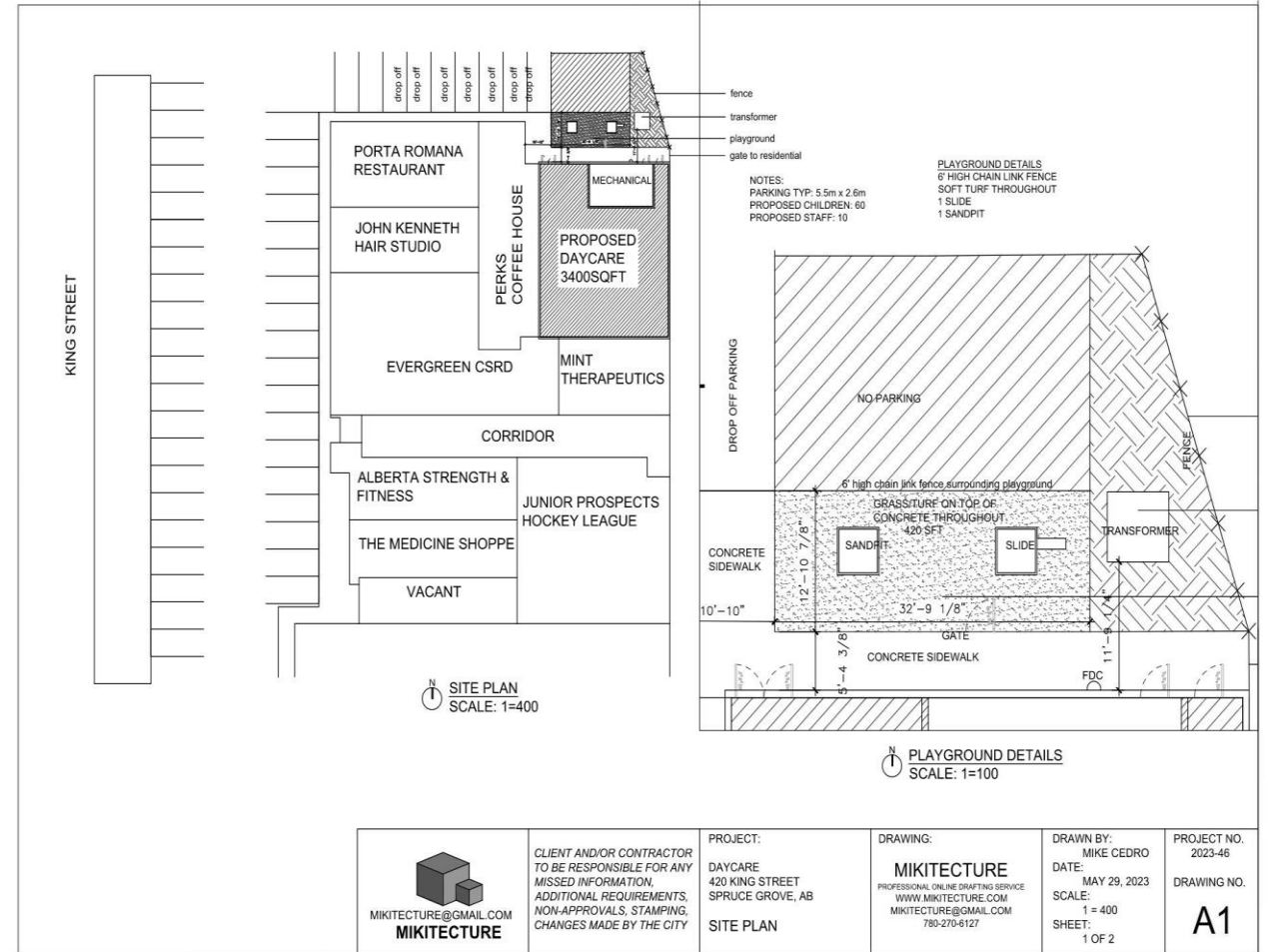
Child Care Facility Regulations

- Outdoor Play Area Regulations



Additional Findings

- Fire Department Connection (FDC)
- Parking



Conditions and Recommended Decision for a Development Permit

- Municipal Government Act
- Land Use Bylaw
- Proposed Conditions
- Recommended Decision

Questions