

2022

SOCIAL IMPACT REPORT

Community Social Development



FCSS Provincial Requirements

FCSS Act and Regulation

- Develop independence, strengthen coping skills and become more resistant to crisis;
- Develop an awareness of social needs;
- Develop interpersonal and group skills which enhance constructive relationships among people;
- Help people and communities assume responsibility for decisions and actions which affect them;
- Provide supports that help sustain people as active participants in the community.

Accountabilities

- Provincial Program/Financial Report, Audited Financial Statements, Provincial Outcome Measures







SD1 help people to develop independence, strengthen coping skills and become more resistant to crisis;

SD2 help people to develop an awareness of social needs;

SD3 help people to develop interpersonal and group skills which enhance constructive relationships among people;

SD4 help people and communities to assume responsibility for decisions and actions which affect them; and

SD5 provide supports that help sustain people as active participants in the community.

ACTIVITY	To Strengthen		
	Programs and Services	Initiatives	Policy and Systems Change
	Individuals and Families	Community	Social Infrastructure
TARGET			
			
OUTCOME	Individual and Family People are in healthy relationships, participate in social networks, are engaged in civil society and can fulfill their own basic needs. Families have adequate resources to meet their physical needs, as well as the knowledge and skills needed to nurture and care for family members.	Community People feel safe, welcome, and included in their communities and work together to improve the quality of life for everyone.	Social People have access to facilities, programs, and services appropriate to their individual needs.



The Department

COMMUNITY SOCIAL DEVELOPMENT

CSD is structured to help build a strong community that meets the diverse needs of residents.

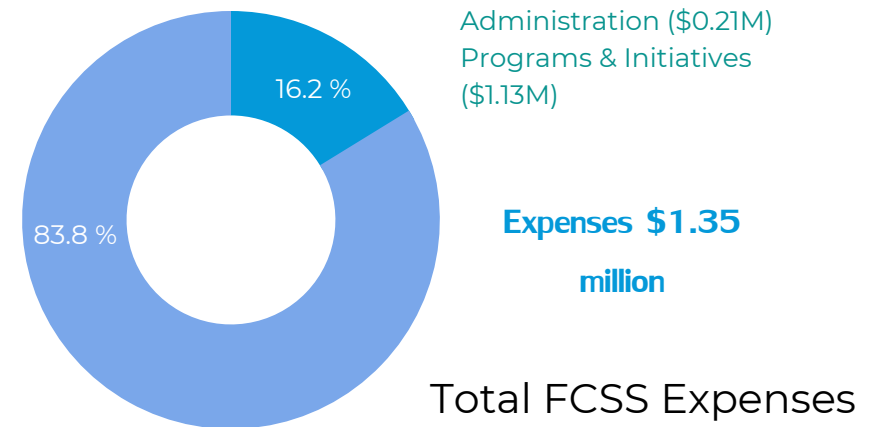
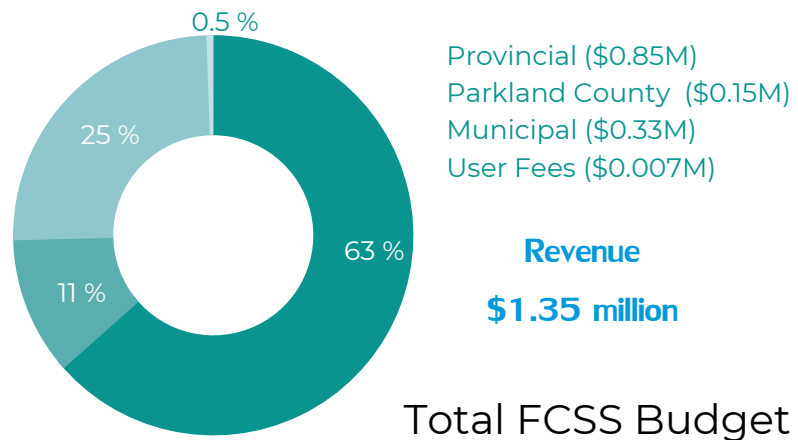
FAMILY AND COMMUNITY SUPPORT SERVICES (FCSS)

Supports individuals and families through the FCSS Strategic Directions by delivery of preventative programs and services aimed at supporting the increasingly diverse needs of residents.

SOCIAL PLANNING/COMMUNITY DEVELOPMENT

Supports at the community level by focusing on achieving broader social change through collaboration, engagement, community development, research, education, and grants.

2022 YEAR AT A GLANCE





5733+ residents of Spruce Grove and Parkland County engaged in individual programming and supports

620+ residents of Spruce Grove and Parkland County actively engaged with their community



INDIVIDUAL FAMILY SUPPORT SERVICES





COMMUNITY HUB

92 unique users

60% chronically unsheltered

62% between 25 - 54 years old

70% male

80% Spruce Grove residents

The Community Hub (the Hub) was established in the fall of 2022 to address an immediate need for supports.

As there is no overnight accommodation, the Hub is not a shelter but rather a temporary Community space where unsheltered individuals can access necessary supports during daytime hours.



Both you and Stark bring a lot of Joy to the Hub. Thank you for all you do.
-Cody

Thank you for round the hub. I really appreciate your help.
Shingini

Cathy, Cand St

"The unsheltered cheer to others will be the beginning of a happier life for ourselves." -Helen Keller

Your willingness to give your time and service is greatly appreciated! -Brenna





COMMUNITY DEVELOPMENT

Community Volunteer Income Tax Program



(SVITP)
644

completed tax
returns

\$ 3.1 million
returned to the
community

56

Programs and
Initiatives



1,186

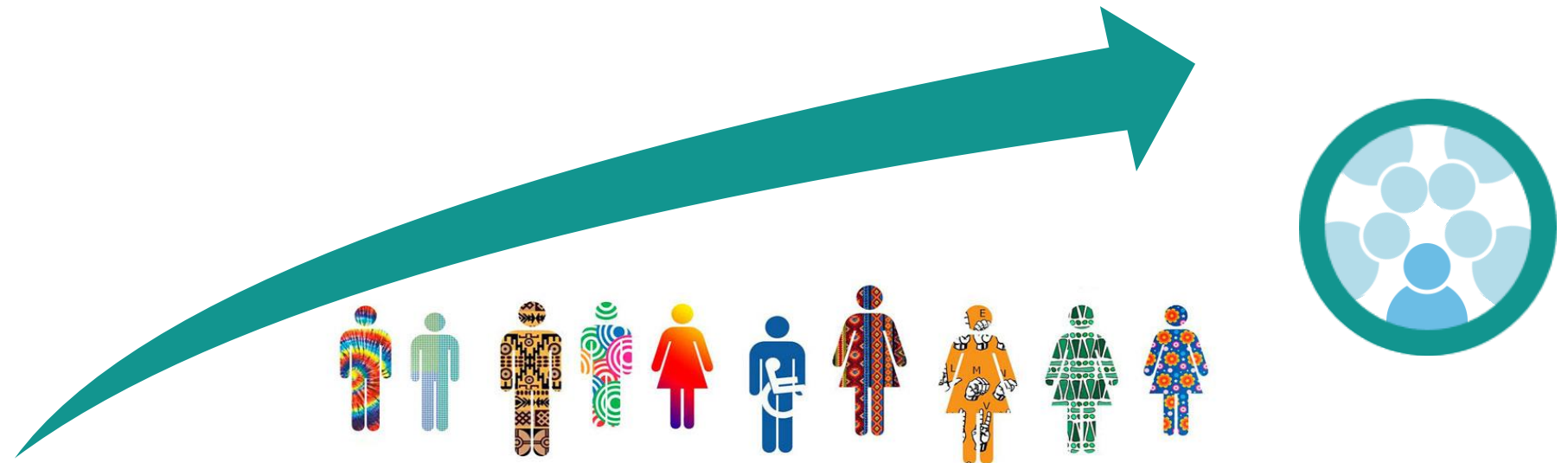
Volunteer Hours

YOUTH



TRENDS & LOOKING FORWARD

- Unsheltered, domestic violence, mental health
- DIEB - community inclusion initiative
- Community connections and accessibility of/to services
- Collaborations and collective impact towards complex social issues
- Implementation, tracking and reporting of social sustainability refresh
- Social incubation and community conversations
- Community advisory process - lens to review service delivery



Questions?

Community Social Development

City of Spruce Grove 105 - 505 Queen Street
Spruce Grove AB T7X 2V2

780-962-7583

www.sprucegrove.org

