

# **THE CITY OF SPRUCE GROVE**

## **BYLAW C-1214-22**

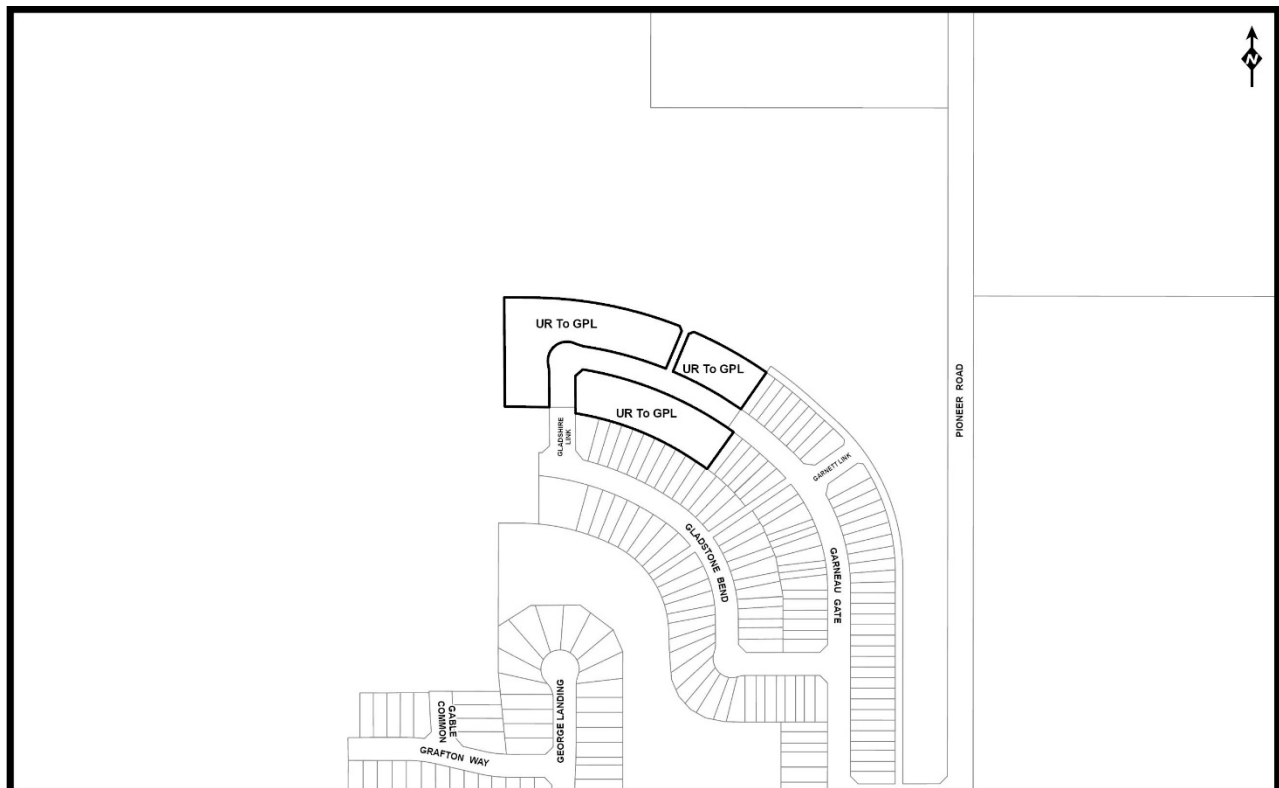
### **LAND USE BYLAW AMENDMENT – GREENBURY STAGE 12**

WHEREAS, pursuant to the *Municipal Government Act*, RSA 2000 cM-26, a municipality shall pass a land use bylaw and may amend the land use bylaw;

AND WHEREAS, the City of Spruce Grove wishes to amend Bylaw C-824-12, the Land Use Bylaw;

NOW THEREFORE, the Council for the City of Spruce Grove, duly assembled, hereby enacts as follows:

1. Bylaw C-824-12, Schedule A: City of Spruce Grove Land Use Bylaw Map, is amended as follows:
  - 1.1 To redistrict portion of Lot 2, Block A, Plan 132 4055, from UR - Urban Reserve District to GPL – Greenbury Planned Lot District, as shown on the map below:



2. This amending bylaw shall be consolidated into Bylaw C-824-12.
3. This bylaw shall come into force and effect when it receives third reading and is duly signed.

First Reading Carried                      18 July 2022

Second Reading Carried                      22 August 2022

Third Reading Carried                      [Click here to enter a date.](#)

Date Signed

---

Mayor

---

City Clerk