A large, stylized teal graphic on the left side of the page, consisting of several overlapping, curved, brushstroke-like shapes that resemble a stylized letter 'S' or a series of waves.

Land Use Bylaw
Amendment - Redistricting
Westwind Stage 2

Public Hearing

City of Spruce Grove
Council Meeting
Bylaw C-1186-22
March 28, 2022





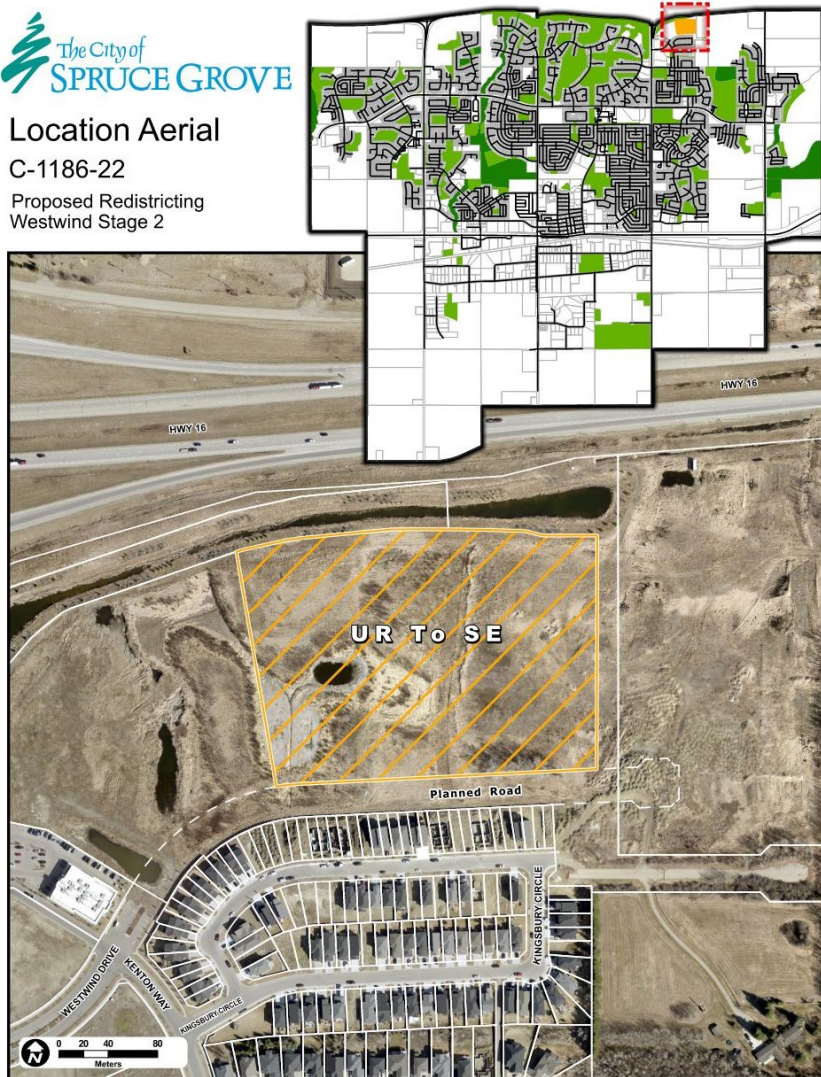
Location



Location Aerial

C-1186-22

Proposed Redistricting
Westwind Stage 2



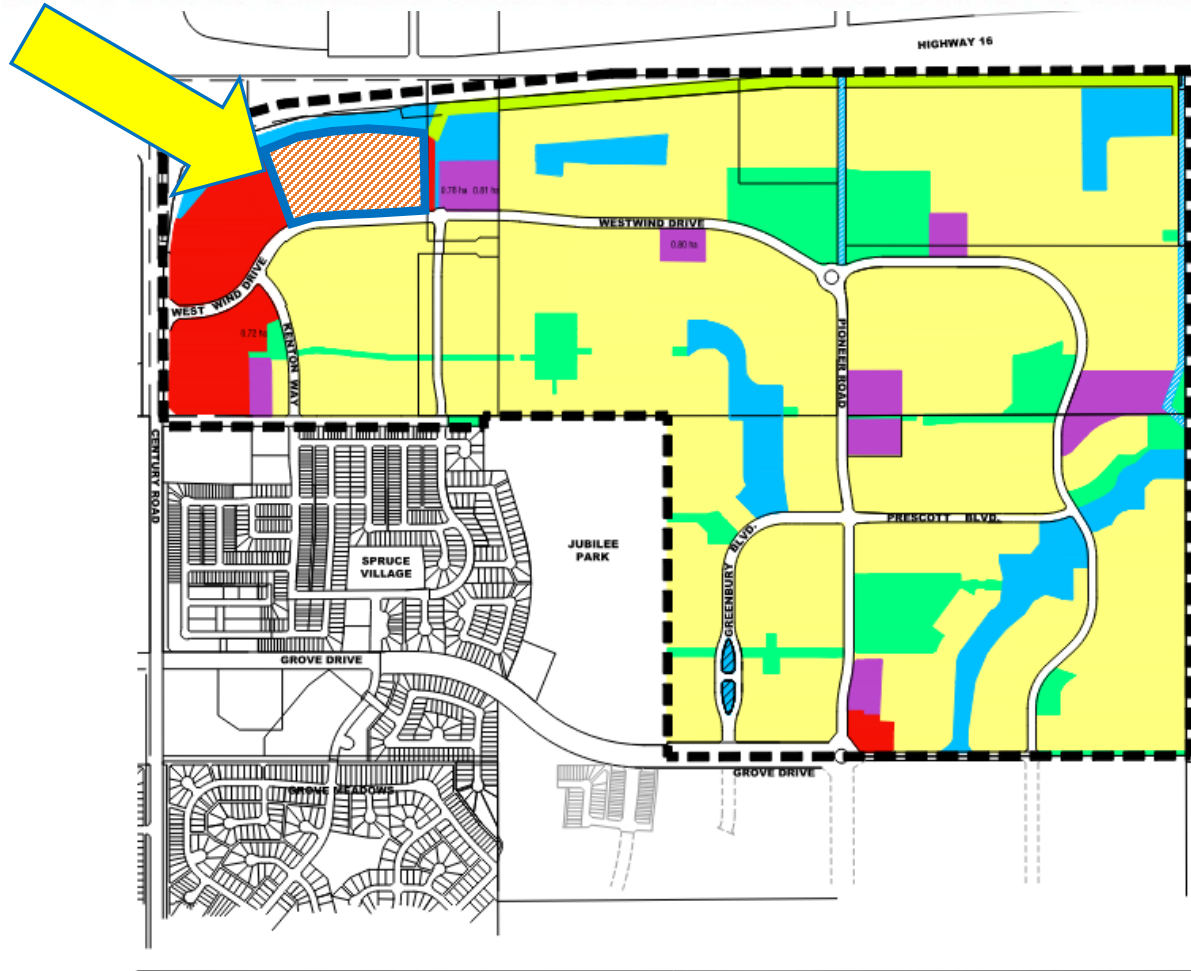
Westwind Stage 2

Intended Land Use:

- Community Hub,
Commercial



Pioneer Lands Area Structure Plan



LEGEND

- | | | |
|------------------------------------|---------------------------|--------------------|
| Commercial | Park/Open Space | ASP Boundary |
| Medium to High Density Residential | Berm | Amendment Boundary |
| Low to Medium Density Residential | Storm Management Facility | Transit Station |
| Public Utility Lot (PUL) | | |

**APPROVED
DEVELOPMENT
CONCEPT**



Pioneer Lands Area Structure Plan



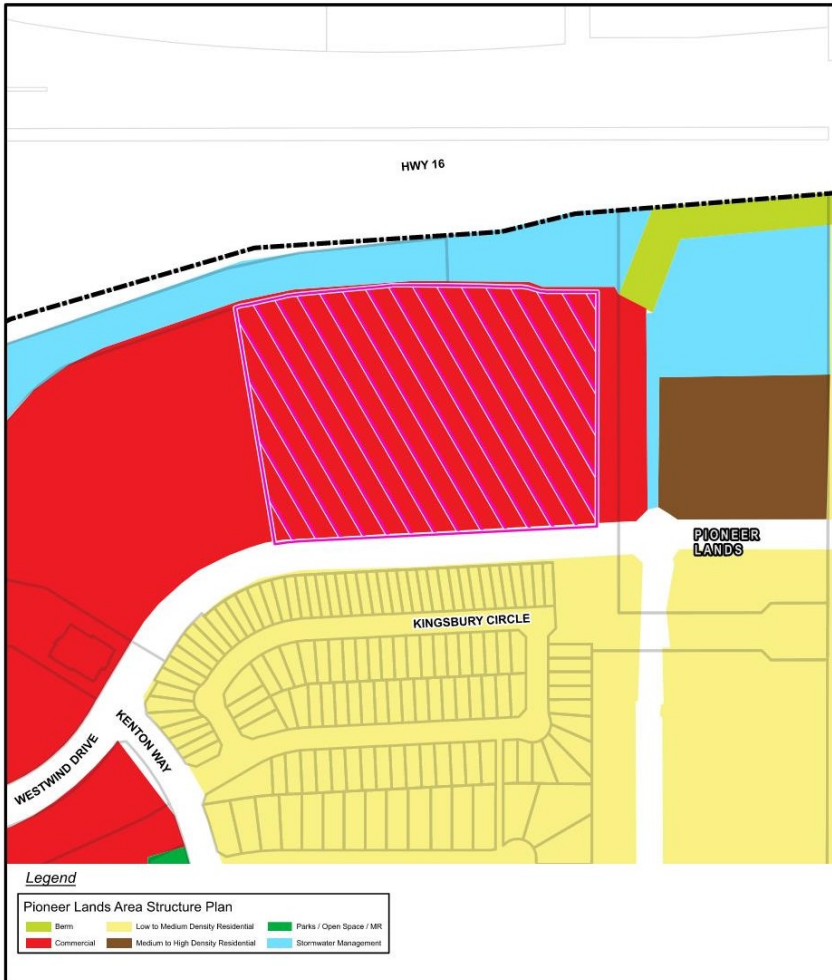
ASP Overview

Site of Proposed Redistricting C-1186-22
Westwind Stage 2



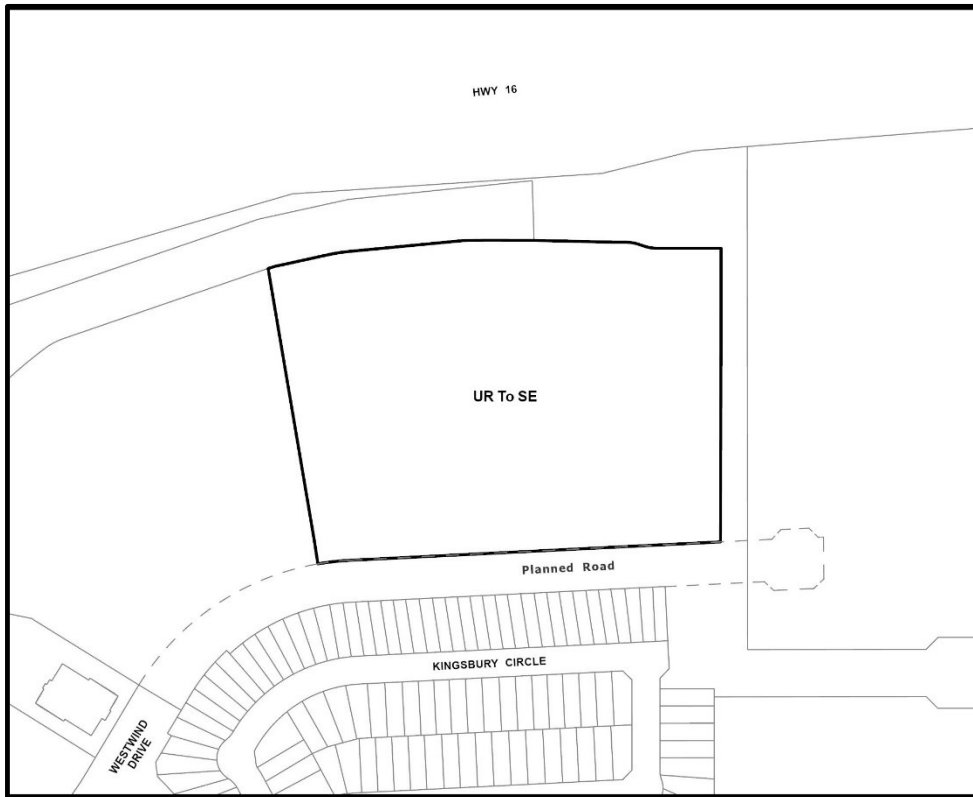
» Land Use Concept

» Commercial





Proposed Amendment



Legal Description:

Lot 9, Block 1, Plan 102
7111

Amendment Area: 5.47 ha

Proposed amendment

From: UR – Urban Reserve

To: SE – Sports and
Entertainment District

Public Hearing

C-1186-22

Questions & Comments

