A large, abstract teal graphic on the left side of the page, consisting of several thick, overlapping, curved strokes that resemble a stylized 'S' or a series of connected loops.

Land Use Bylaw
Amendment - Redistricting
Jesperdale Stage 12

Public Hearing

City of Spruce Grove
Council Meeting
Bylaw C-1183-21
March 28, 2022





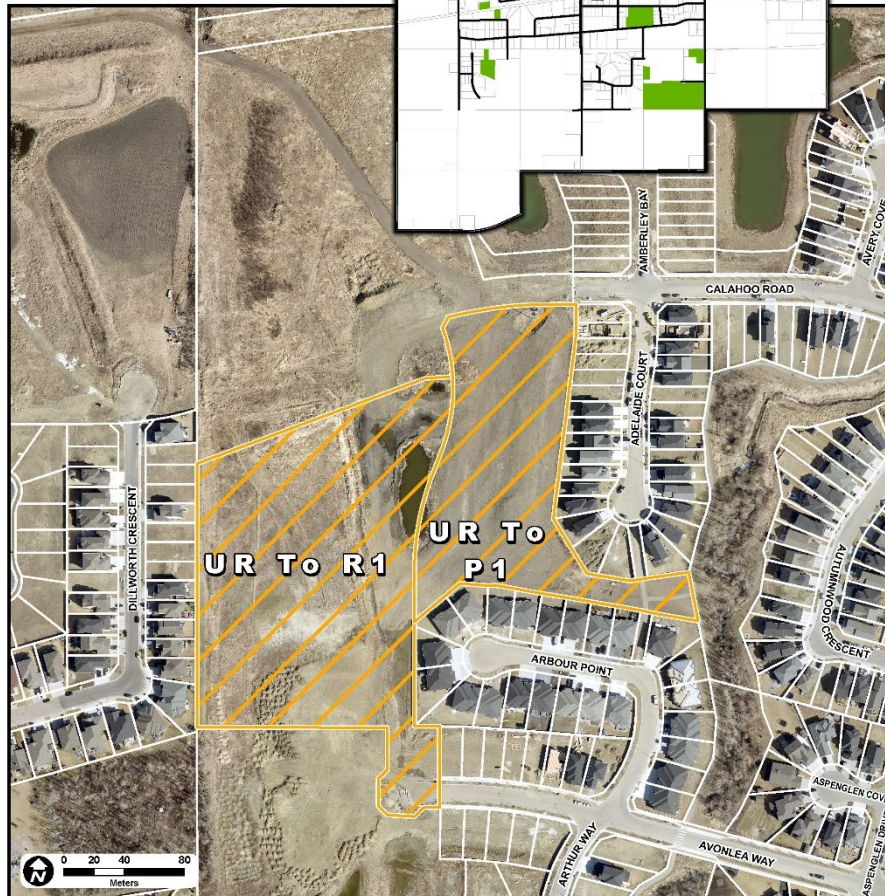
Location



Location Aerial

C-1183-21

Proposed Redistricting
Jesperdale Stage 12



» Jesperdale Stage 12

» **Intended Land Use:**

- Residential
- Parks and Recreation



North Central Area Structure Plan

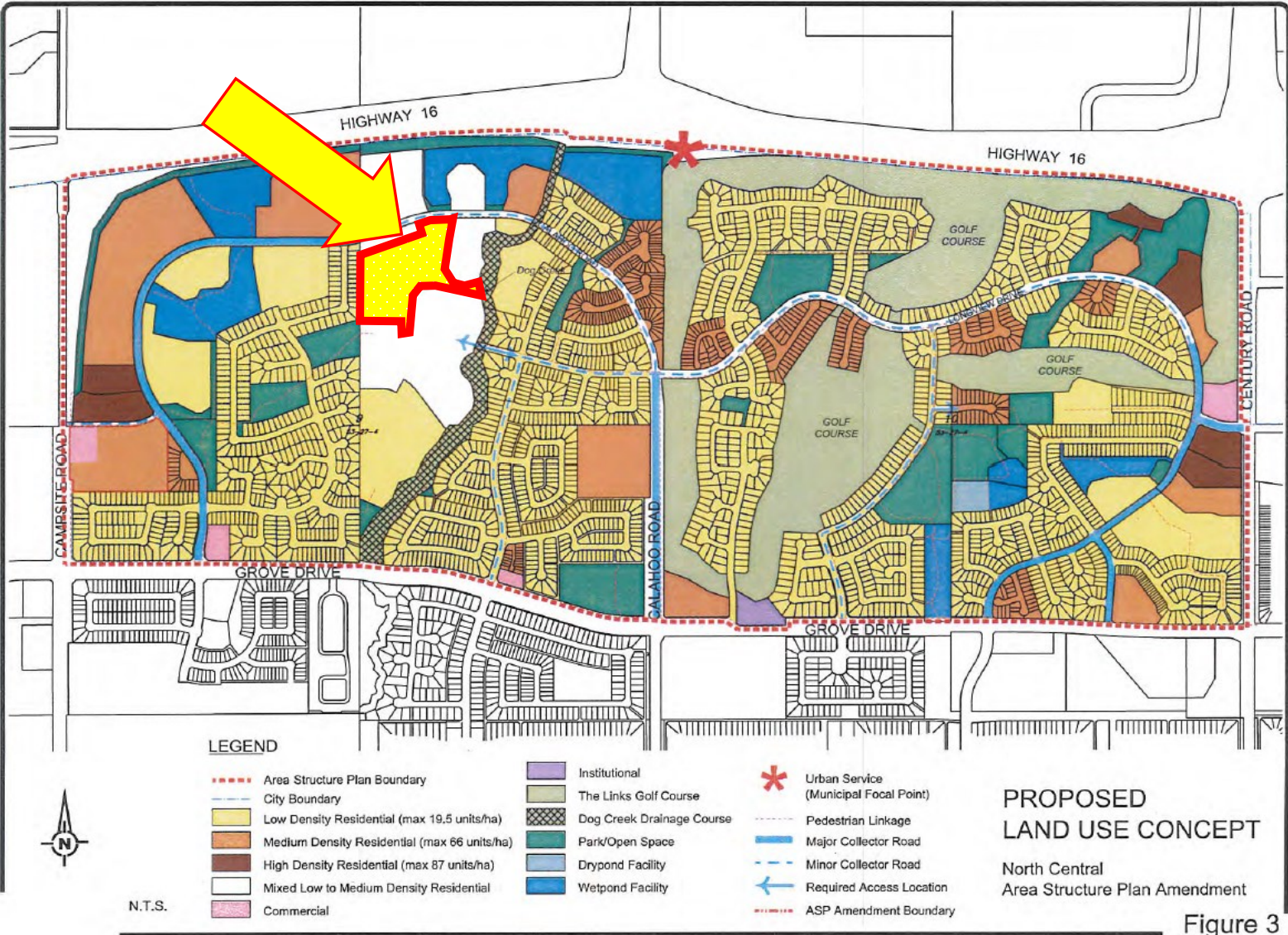


Figure 3



North Central Area Structure Plan



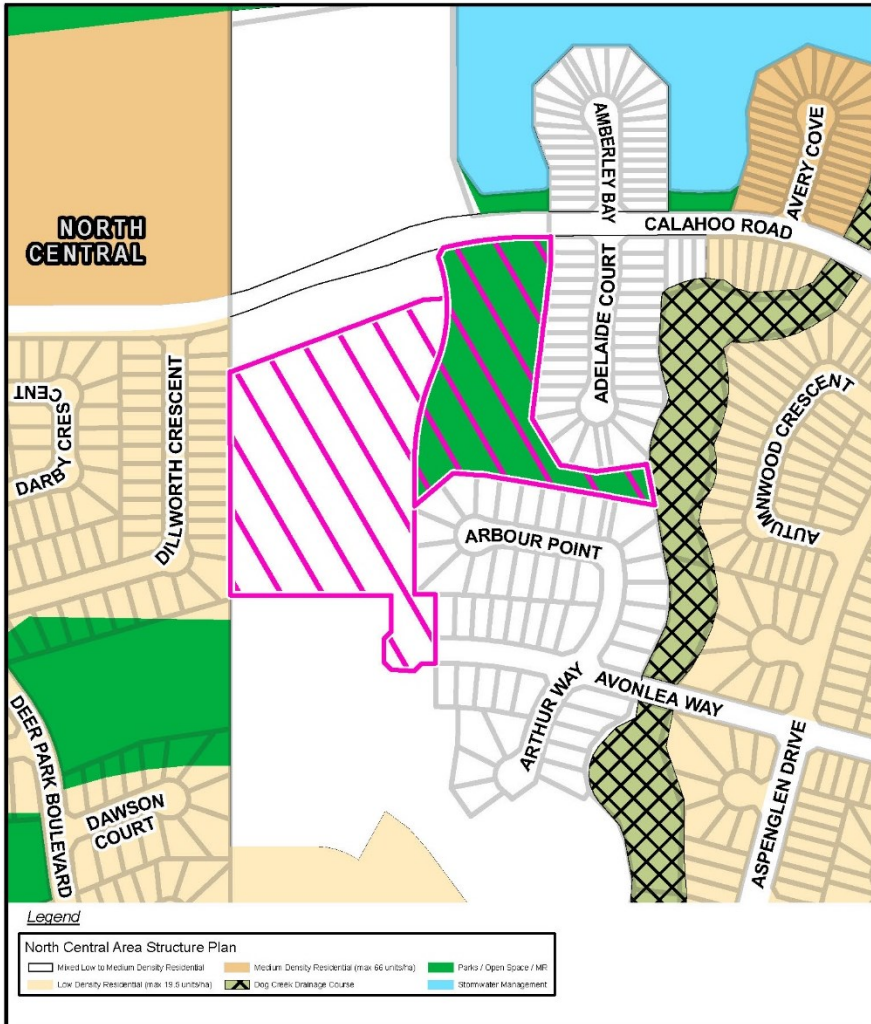
ASP Overview

Site of Proposed Redistricting C-1183-21
Jesperdale Stage 12



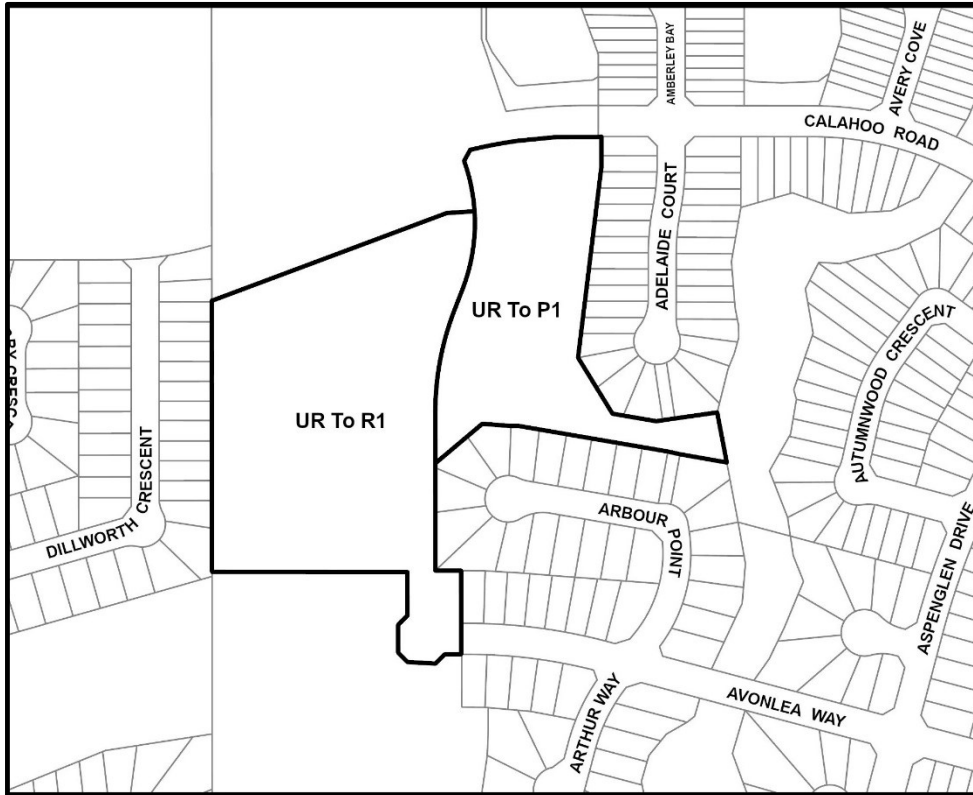
» Land Use Concept

- » Mixed Low to Medium Density Residential
- » Parks / Open Space





Proposed Amendment



Legal Description:

Lot 1, Block 23, Plan 062
6301

Amendment Area: 5.11 ha

Proposed amendment

From: UR – Urban Reserve

To: R1 – Mixed Low to
Medium Density
Residential District

And

P1 – Parks and
Recreation District

Public Hearing

C-1183-21

Questions & Comments

