A large, stylized teal graphic on the left side of the page, consisting of several overlapping, curved, brushstroke-like shapes that resemble a stylized letter 'S' or a series of connected curves.

Land Use Bylaw
Amendment - Redistricting
Jesperdale Stage 12

Second Reading

City of Spruce Grove
Council Meeting
Bylaw C-1183-21
March 28, 2022





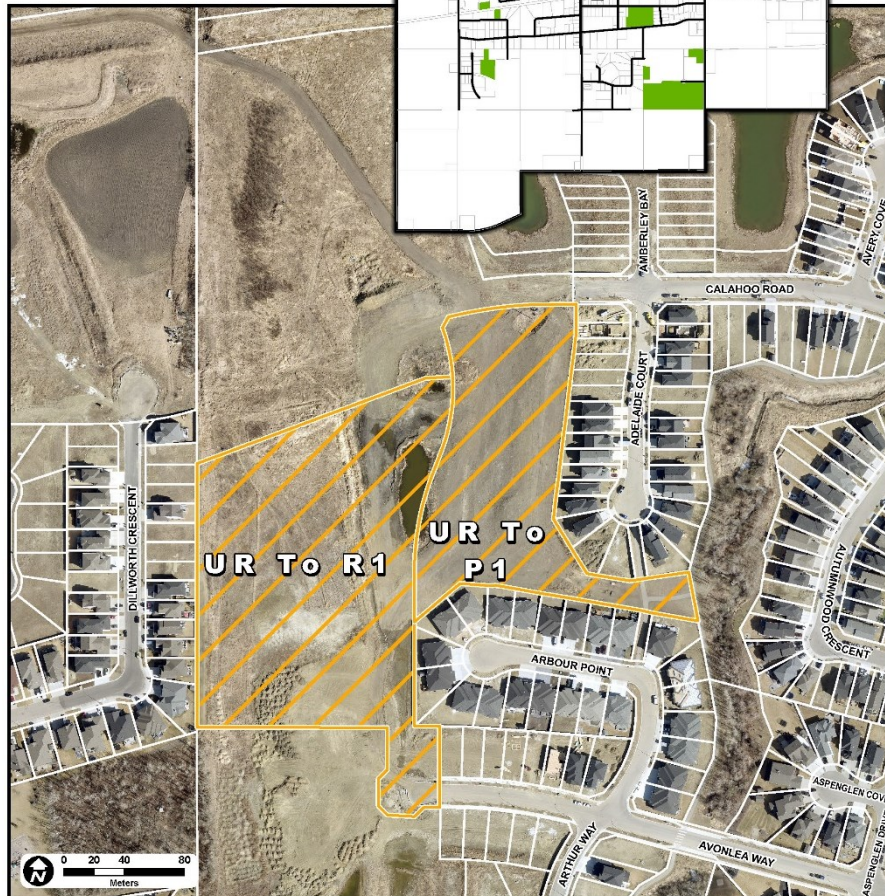
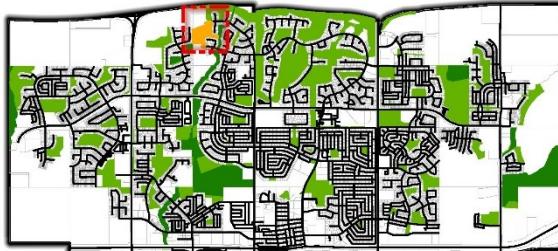
Location



Location Aerial

C-1183-21

Proposed Redistricting
Jesperdale Stage 12



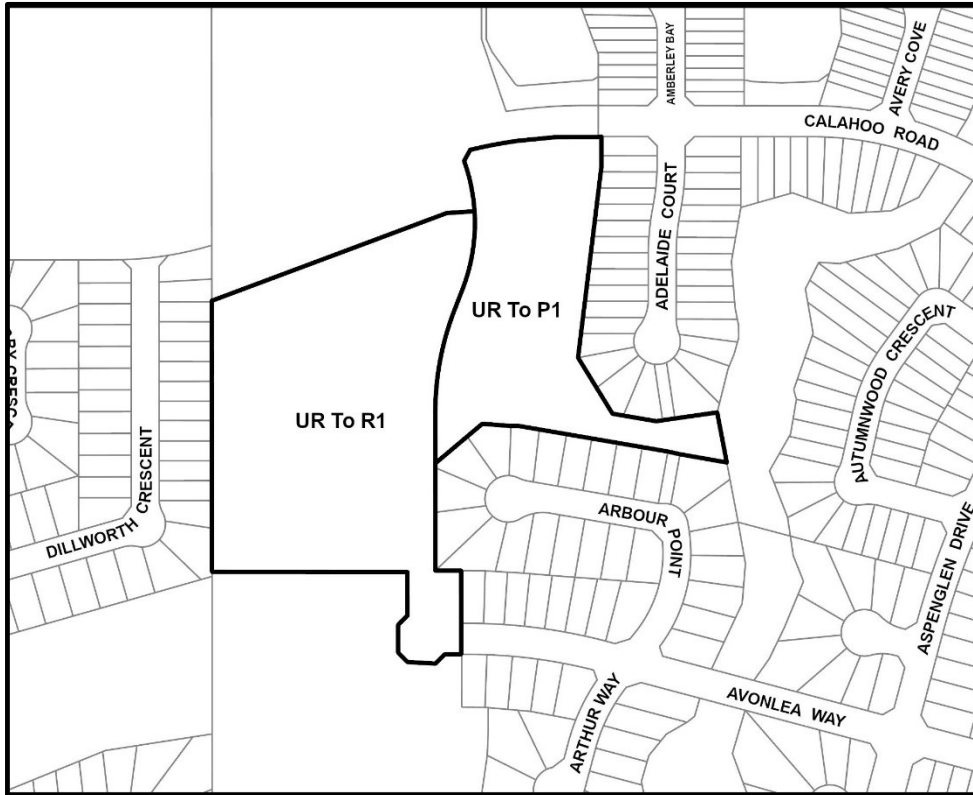
» Jesperdale Stage 12

» Intended Land Use:

- Residential
- Parks and Recreation



Proposed Amendment



Legal Description:

Lot 1, Block 23, Plan 062
6301

Amendment Area: 5.11 ha

Proposed amendment

From: UR – Urban Reserve

To: R1 – Mixed Low to
Medium Density
Residential District

And

P1 – Parks and
Recreation District

Second Reading

C-1183-21

Questions & Comments

